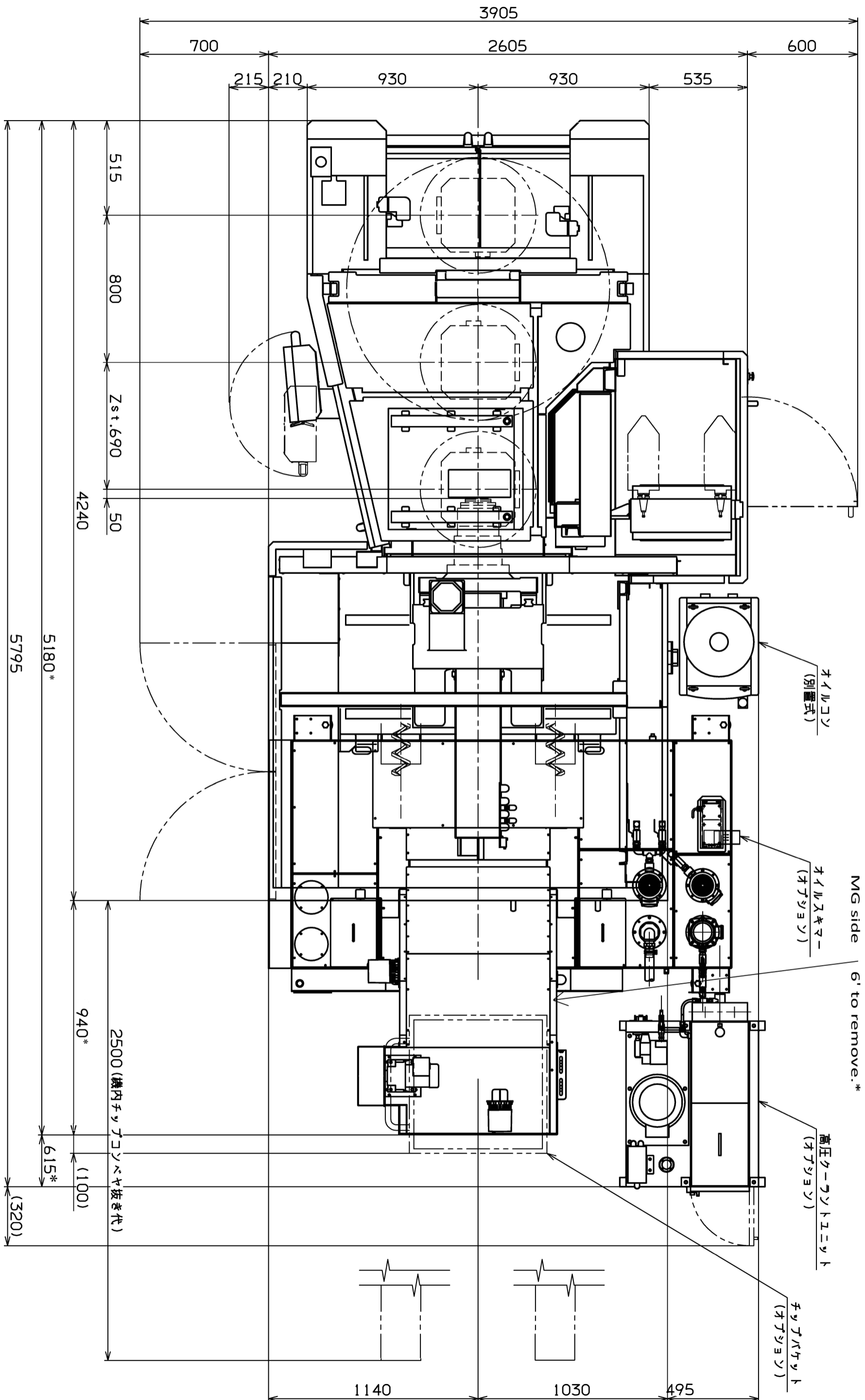


SMART
MACHINE TOOL

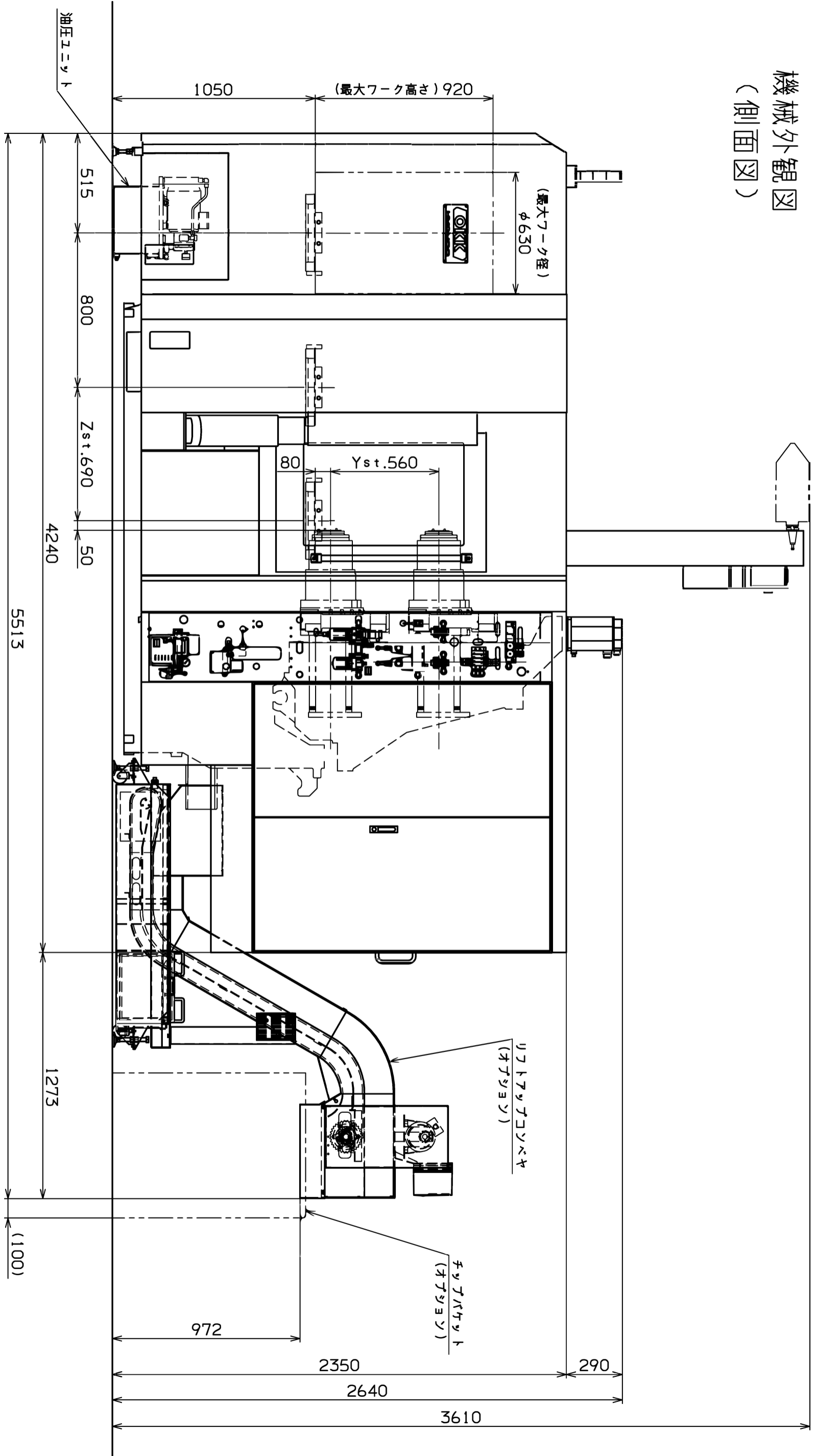
SX4000

**Installation
Packet**

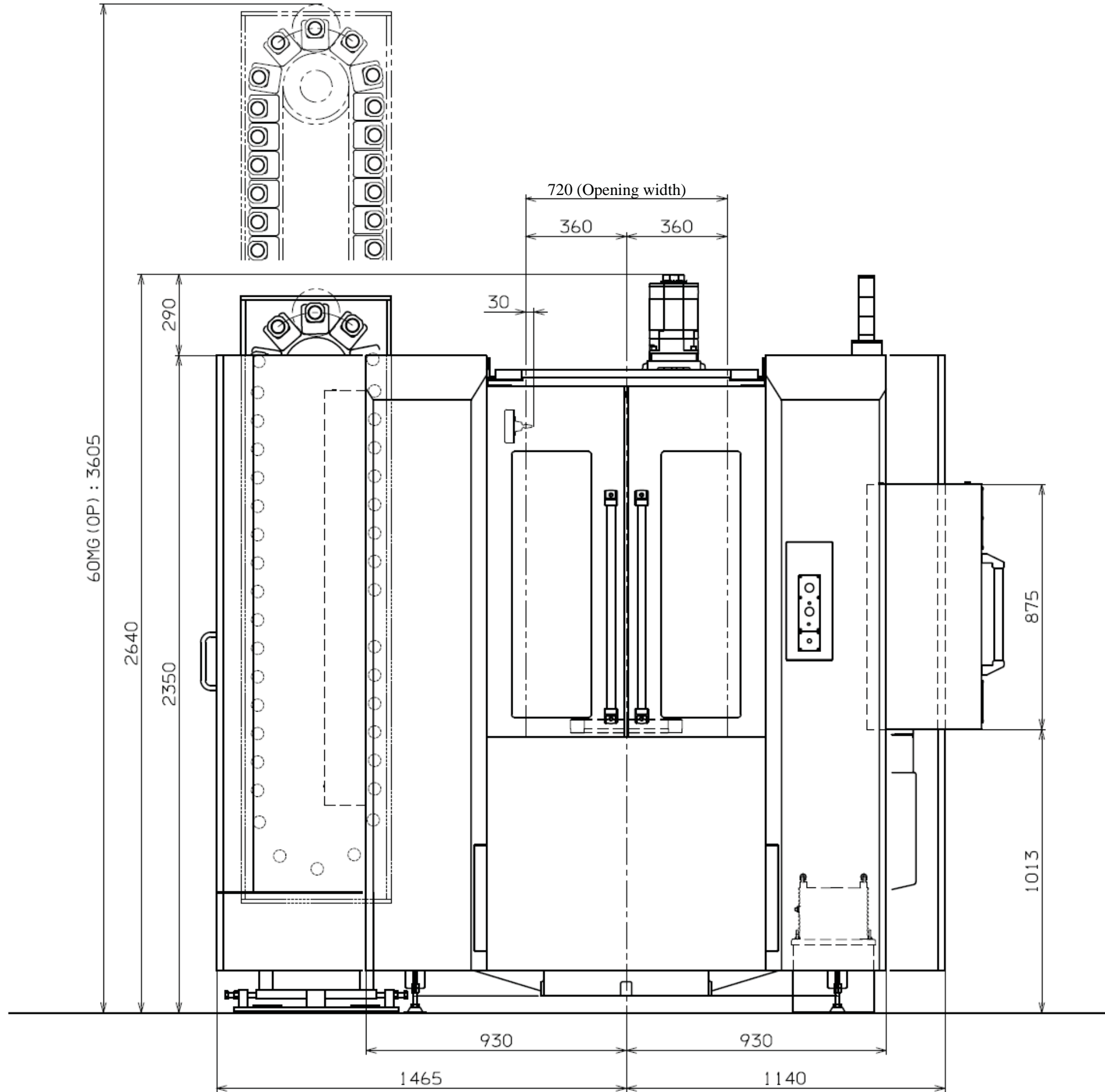
5. ヲロヲスベ-入図



機械外観図
(側面図)



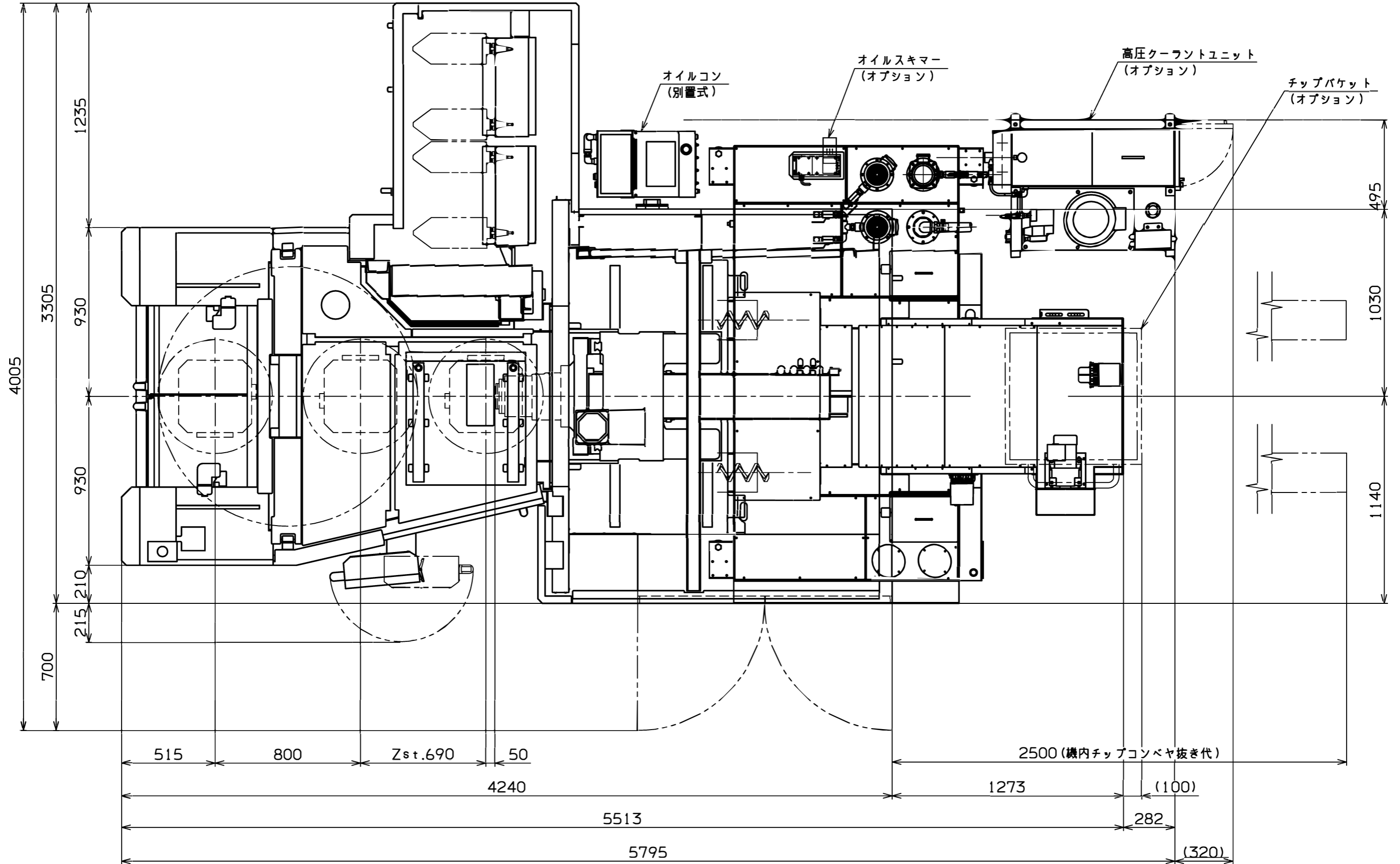
6. Outline Drawing
Front View



MC.0204MC001A 機械本体外觀図・正面図 1:15 MT00569 .130416 大野(清)

SX4000	Standard	15
--------	----------	----

MC 0204FS038A 707スベース図 1:20 8M***** 141020 長澤(順) 0204FS008A



5.1.2 Foundation Drawing for Installation

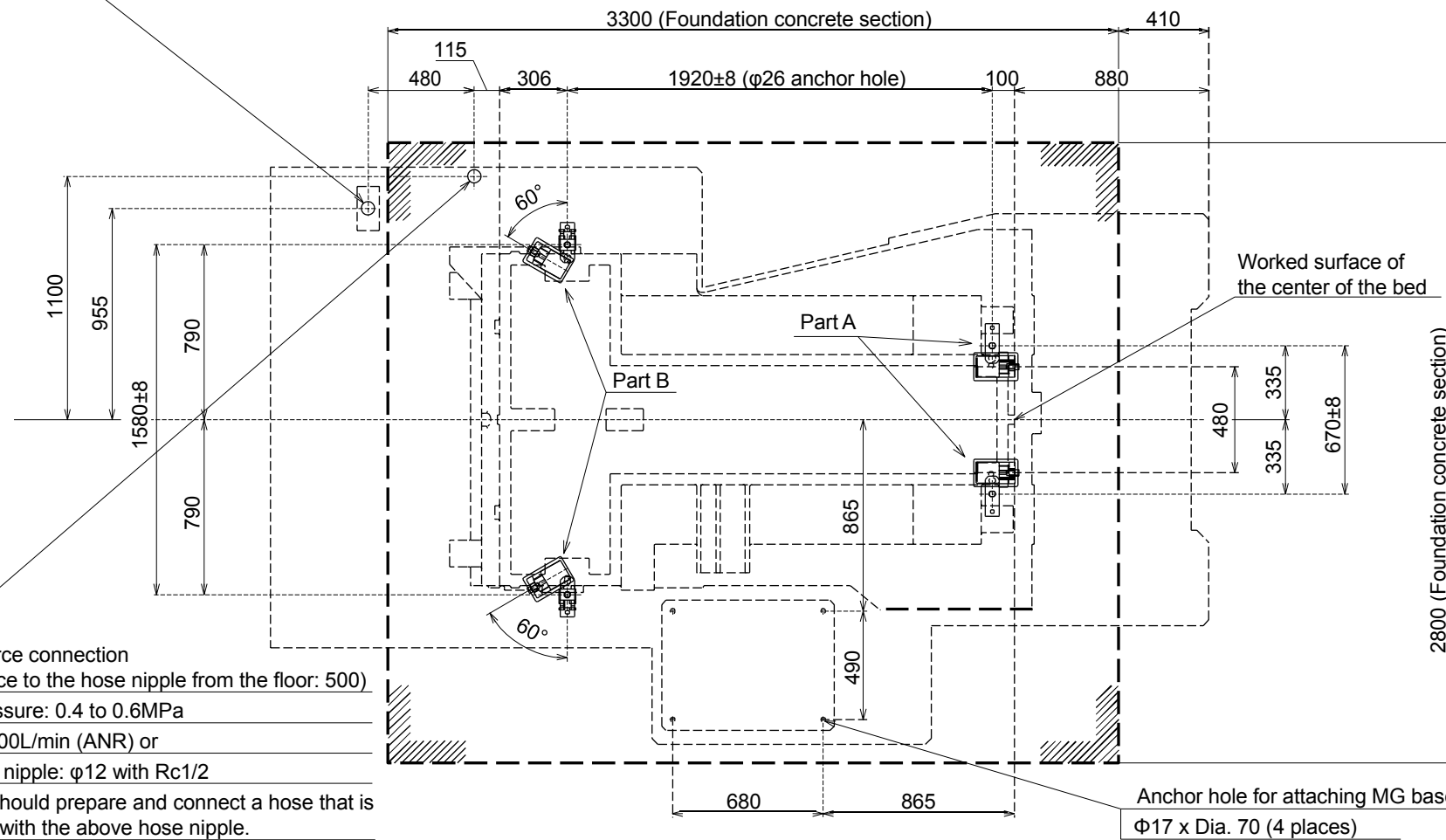
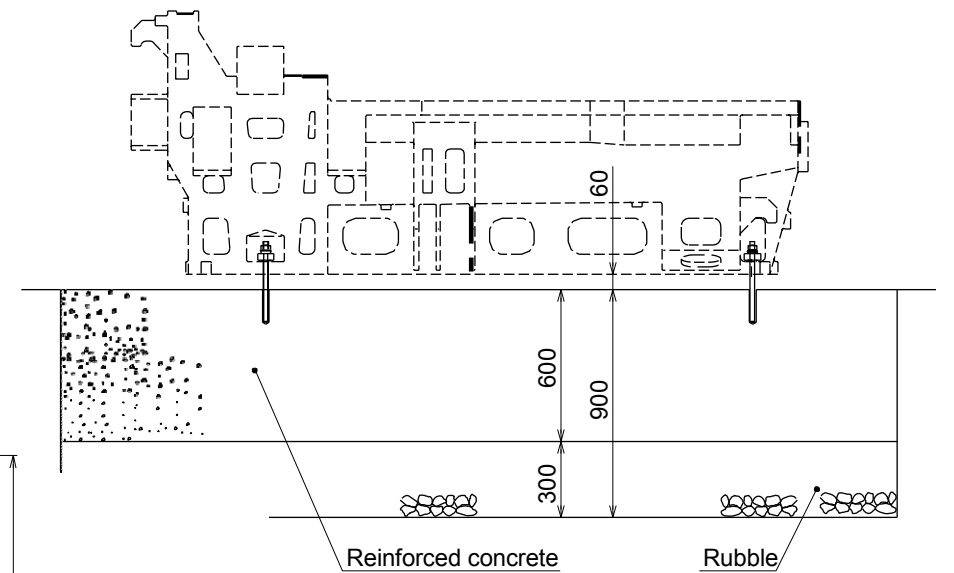
Power cable connection
(Distance to the control box base plate from the floor: 730)

Power capacity:	Refer to the table on the right.
Cable size:	Select the size being equivalent to or larger than the one specified in the table on the right.
Grounding:	Class D (Max. 100Ω)

Cable size should be equal to the power cable.

Power capacity and cable size

Machine specification	FANUC
Power capacity (kVA)	15R
Cable size (mm ²)	48
	50



Foundation and Installation

To maintain machine precision and prevent vibration, pay special attention to the following.

1. The foundation should be rugged enough to maintain safety and horizontality for the machine mass according to the ground for installation place. (Nominal strength: Min. 23 MPa)
2. The foundation concrete should be reinforced with reinforcing bars arranged as appropriate so that it may sufficiently withstand the machine mass.
3. The foundation concrete should be cured for 4 weeks.
4. When installing the machine, set leveling blocks as shown in the drawing for leveling, centering and to prevent oscillation. Periodically check that they stay in proper position and condition.
5. Soil bearing capacity of the ground should be 0.06 MPa at the minimum.
6. When nature of the soil or soil bearing capacity is insufficient, determine sizes and the number of the piles and lay them as necessary.
7. Drill each anchor hole in position within ±8mm from the reference anchor hole.
8. Avoid the anchor hole position to embed the reinforcement.
9. For the bond anchoring procedures, refer to the "Anchor Bolt Embedding Work Procedure" in the Foundation and Installation Manual.

Air source connection
(Distance to the hose nipple from the floor: 500)

Supply pressure:	0.4 to 0.6MPa
Capacity:	500L/min (ANR) or more
Hose nipple:	φ12 with Rc1/2

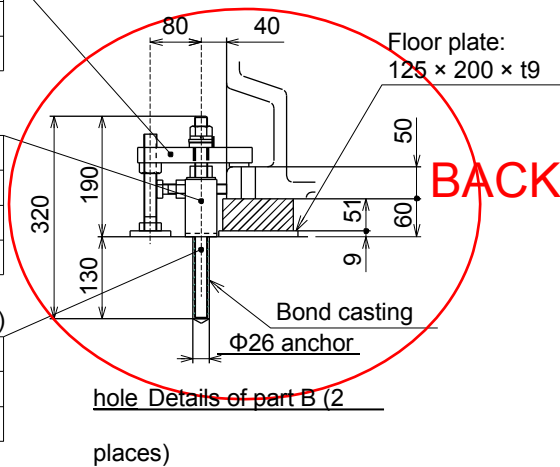
Customer should prepare and connect a hose that is compatible with the above hose nipple.

*Purity of the supplied air should be equivalent to or higher than Class 3.5.4 specified in ISO 8573-1/ JIS B8392-1.

Brace:	4M0112190A (2 pcs.)
Bolt:	SS0182014 (2 pcs.)
Nut:	SS2042000 (2 pcs.)
Floor plate:	4M0112192A (2 pcs.)

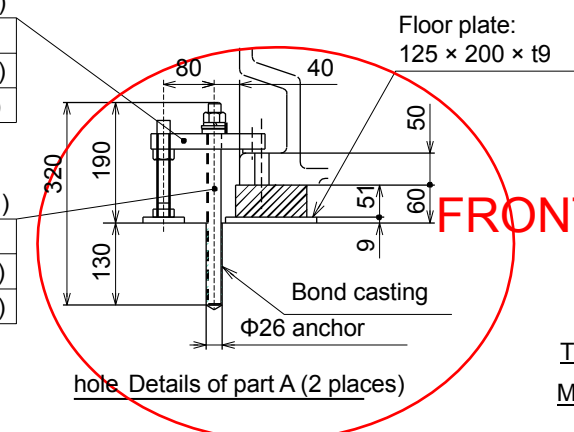
Block:	4M0204043B (2 pcs.)
Nut:	SS2042000 (2 pcs.)
Washer:	SS2512000 (2 pcs.)
Bolt:	SS0161610 (4 pcs.)
Nut:	SS2041600 (4 pcs.)

Anchor bolt:	4M0131398A (2 pcs.)
Nut:	SS2042000 (2 pcs.)
Spring washer:	SS2552000 (2 pcs.)
Spherical washer:	YS9195020 (2 pcs.)



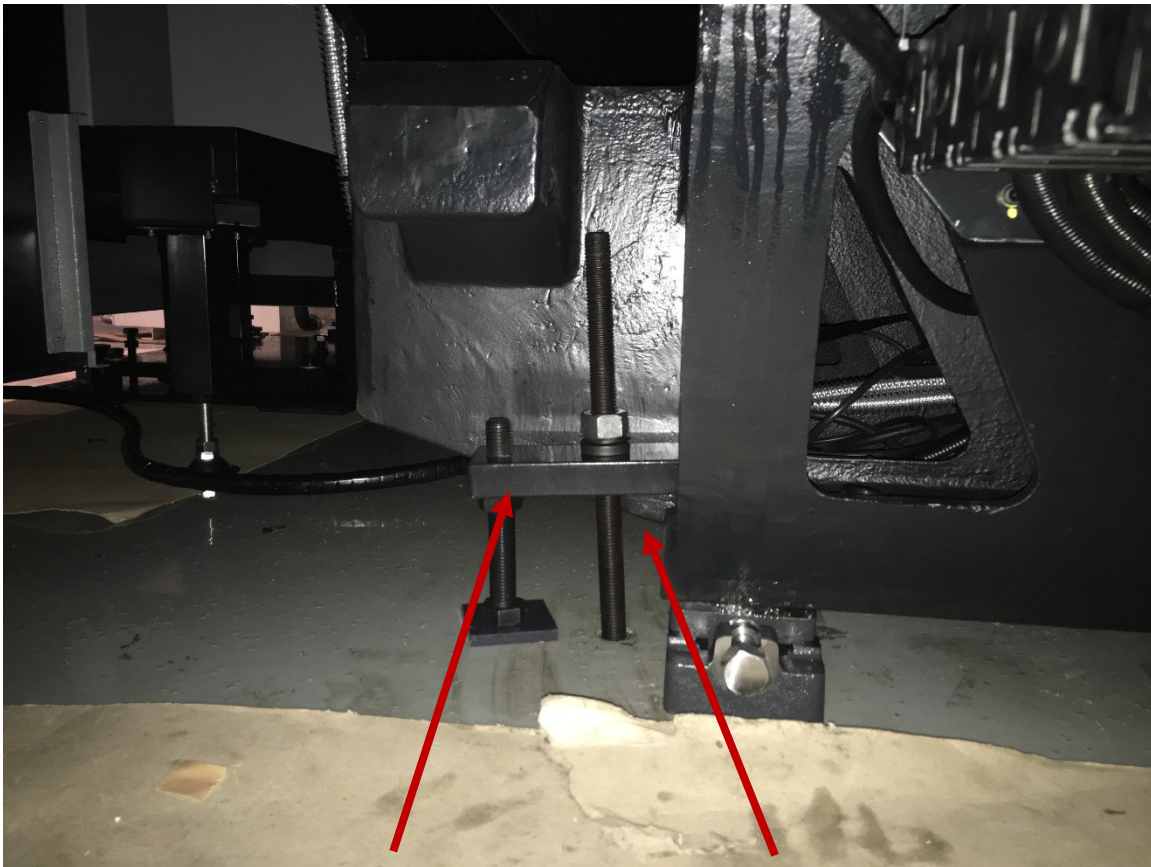
Brace:	4M0112190A (2 pcs.)
Bolt:	SS0182014 (2 pcs.)
Nut:	SS2042000 (2 pcs.)
Floor plate:	4M0112192A (2 pcs.)

Anchor bolt:	4M0131398A (2 pcs.)
Nut:	SS2042000 (2 pcs.)
Spring washer:	SS2552000 (2 pcs.)
Spherical washer:	YS9195020 (2 pcs.)

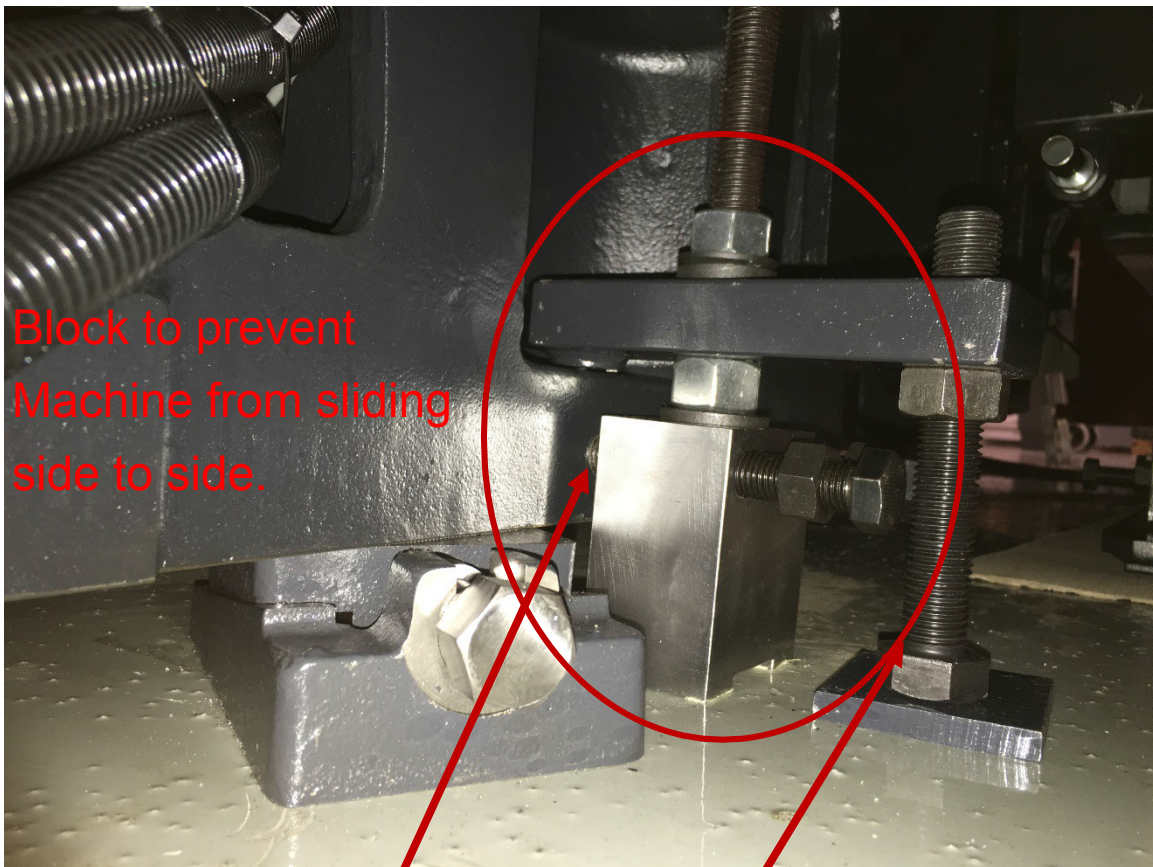


[NOTE] The following bond is used at the time of anchor hole processing. Bond E200 (Konishi Co., Ltd.) Required amount: 1.0 kg (Standard specification)

Total machine mass: 8,500 kg
Max. Workpiece mass: 400 kg per pallet



FRONT OF THE MACHINE



Block to prevent
Machine from sliding
side to side.

BACK OF THE MACHINE

*Packaged with Chip Conveyor crate

SX SERIES POWER REQUIREMENTS

<u>MODEL</u>	<u>H.P</u>	<u>KVA</u>	<u>AMPS @ 220</u>	<u>AMPS @ 480</u> (Transformer Required)
SX4000 (15K RPM #40)	25	48	126	58
Lube Requirements				
* SPINDLE HEAD COOLER UNIT W/BS COOLING	MOBILE VELOCITE #3		6.3 Gal.	
WAYS	XBCEA 0 MOBILE		Auto cartridge	Auto cartridge
OIL FOR AIR	DTE LIGHT		6 OZ.	6 OZ.
* HYDRAULIC	MOBILE DTE LIGHT		5.2 Gal.	5.2 Gal.
B-AXIS	MOBIL GEAR 600 XP100		0.6 Gal.	0.9 Gal.
ATC UNIT	MOBIL HD80W-90		2.1 Gal.	2.1 Gal.
APC UNIT	MOBIL GEAR 600 XP100		0.4 Gal.	0.7 Gal.
COOLANT CTS Unit			140 Gal. 53 Gal.	140 Gal. 53 Gal.

AIR REQUIREMENTS:

MIN 18CFM @ 70-100 PSI

AIR FITTING SIZE: 1/2 DIA. MINIMUM ID (Found under electrical cabinet)

Revised 1/23/15

*Needed at install

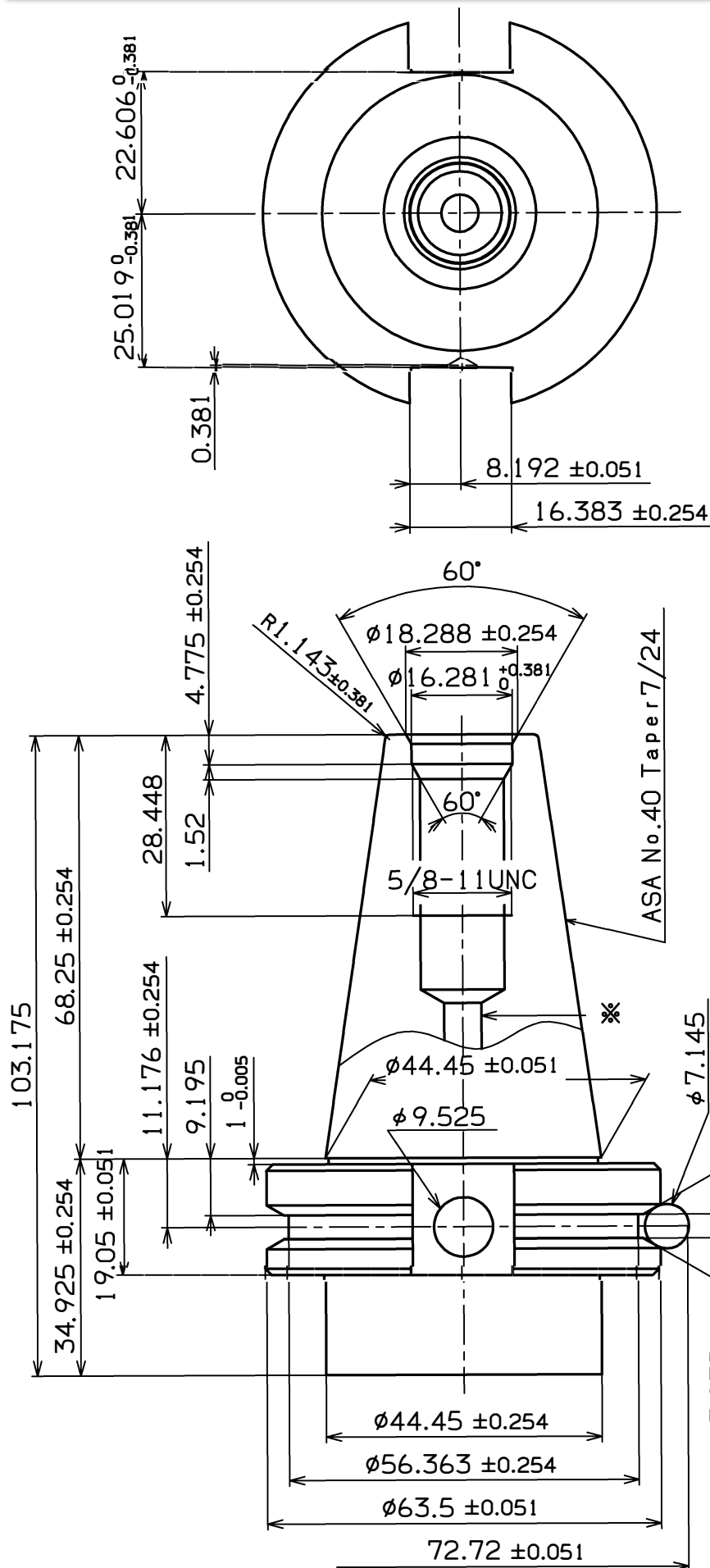
REF:0171TL009A

MAJ2802A 100623

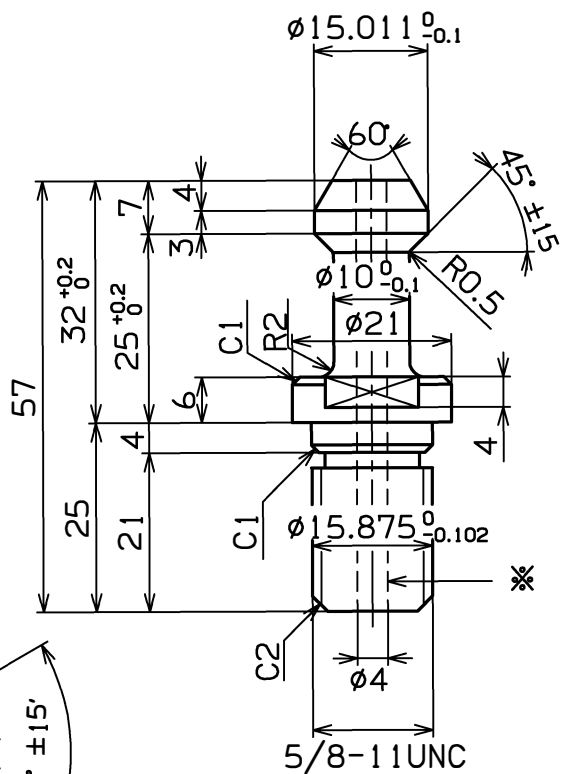
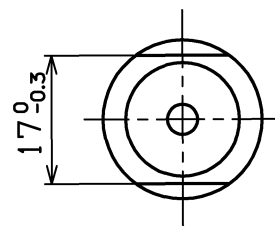
1:1

工具寸法图

MC0171TL010A



Pull Stud



When the center-through-type spindle is used, be sure to confirm that the section marked with * is a through hole.

BIG-PLUS

Unit: mm

HMC400	CAT40 (Center-through)	22
--------	------------------------	----

SX SHIPPING CRATES DIMENSIONS AND WEIGHTS

MODEL		LENGTH	WIDTH	HEIGHT	WEIGHT (Lbs)
SX4000	(Machine)	173"	91"	101"	20,066
	(Magazine, chiller, hyd unit, sheetmetal)	160"	91"	66"	4,311
	(Chip conveyor, level pads [in a cardboard box], accessory boxes)	129"	91"	74"	4,697

REVISED 10/19/18