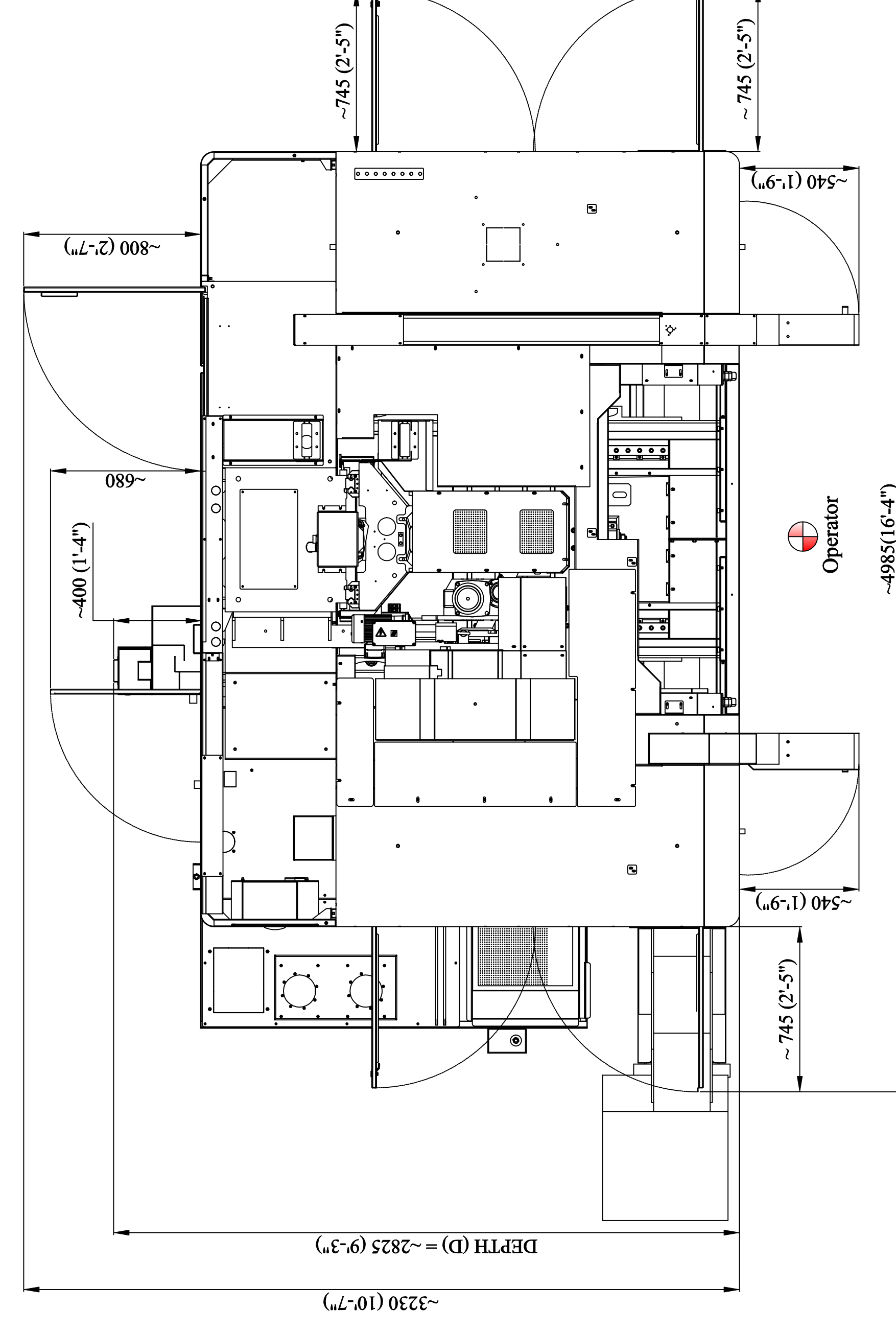
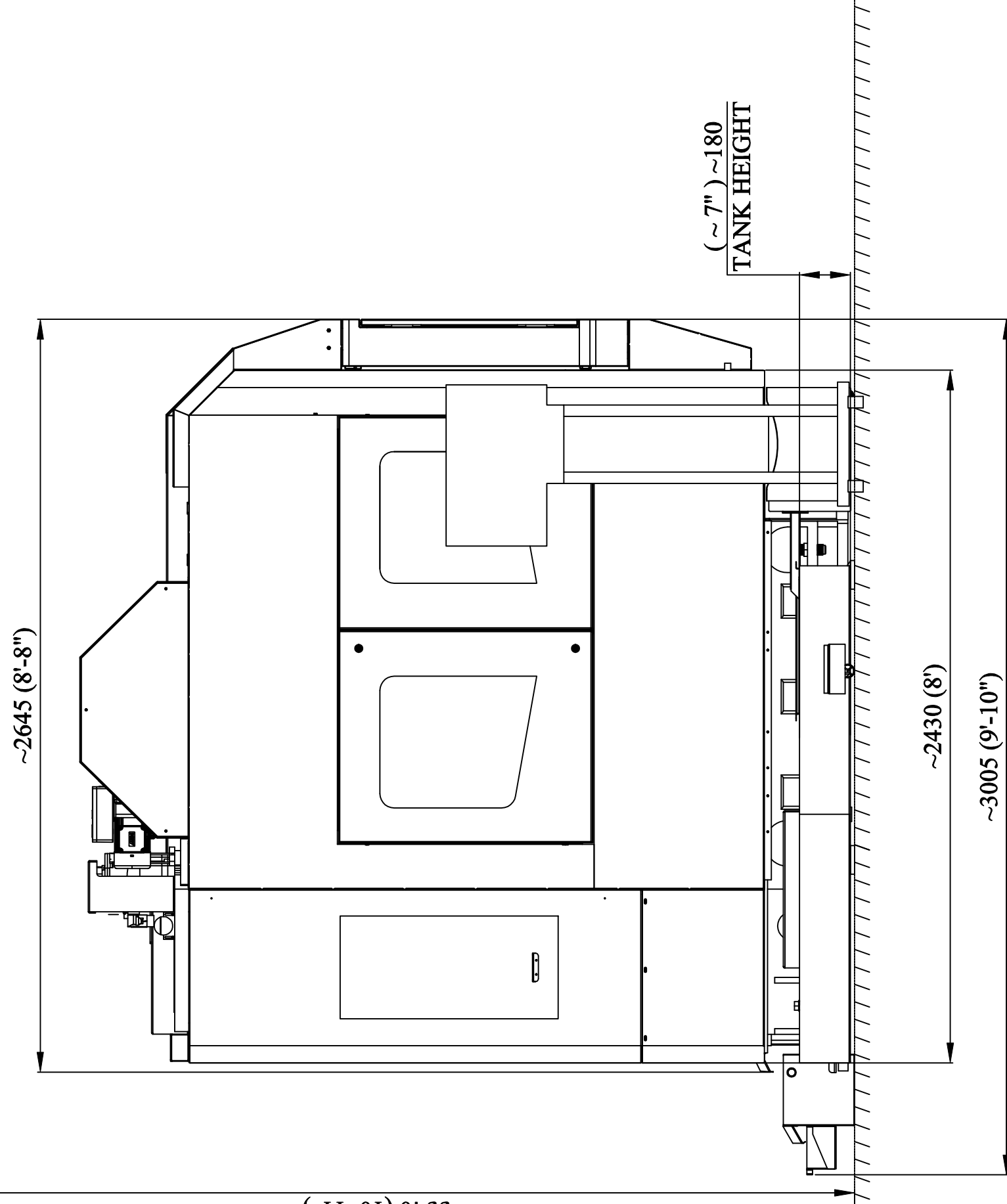
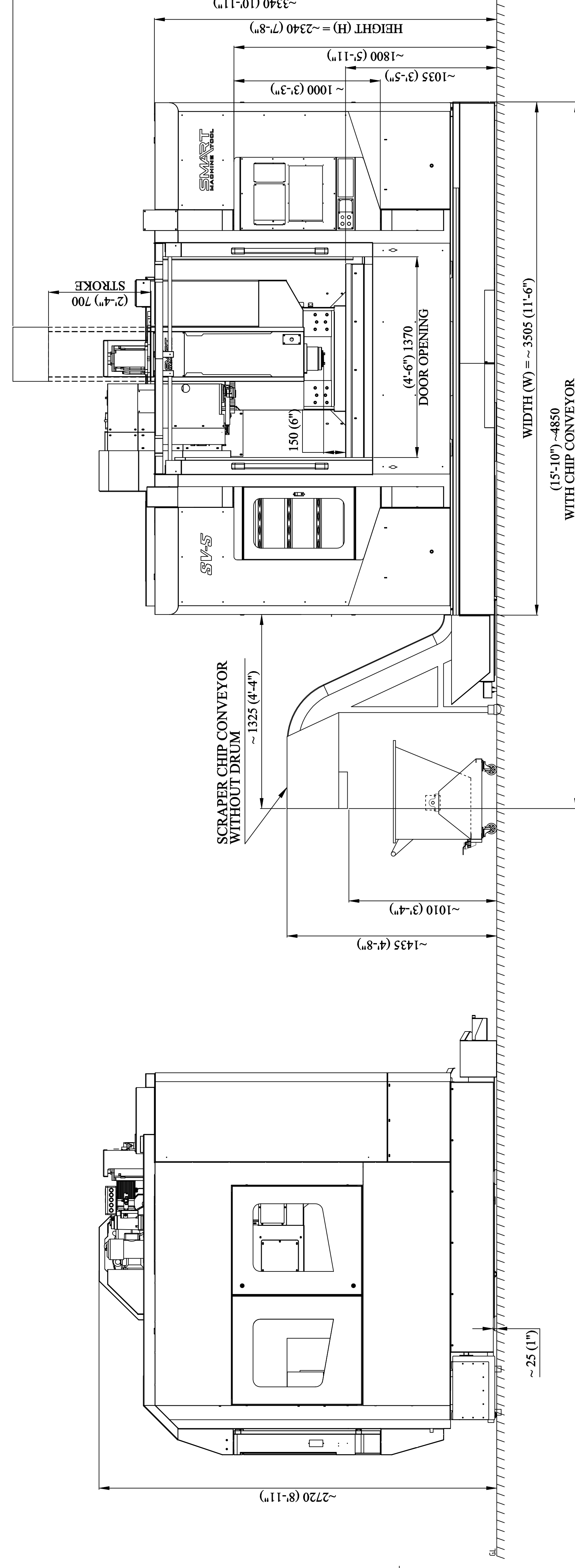
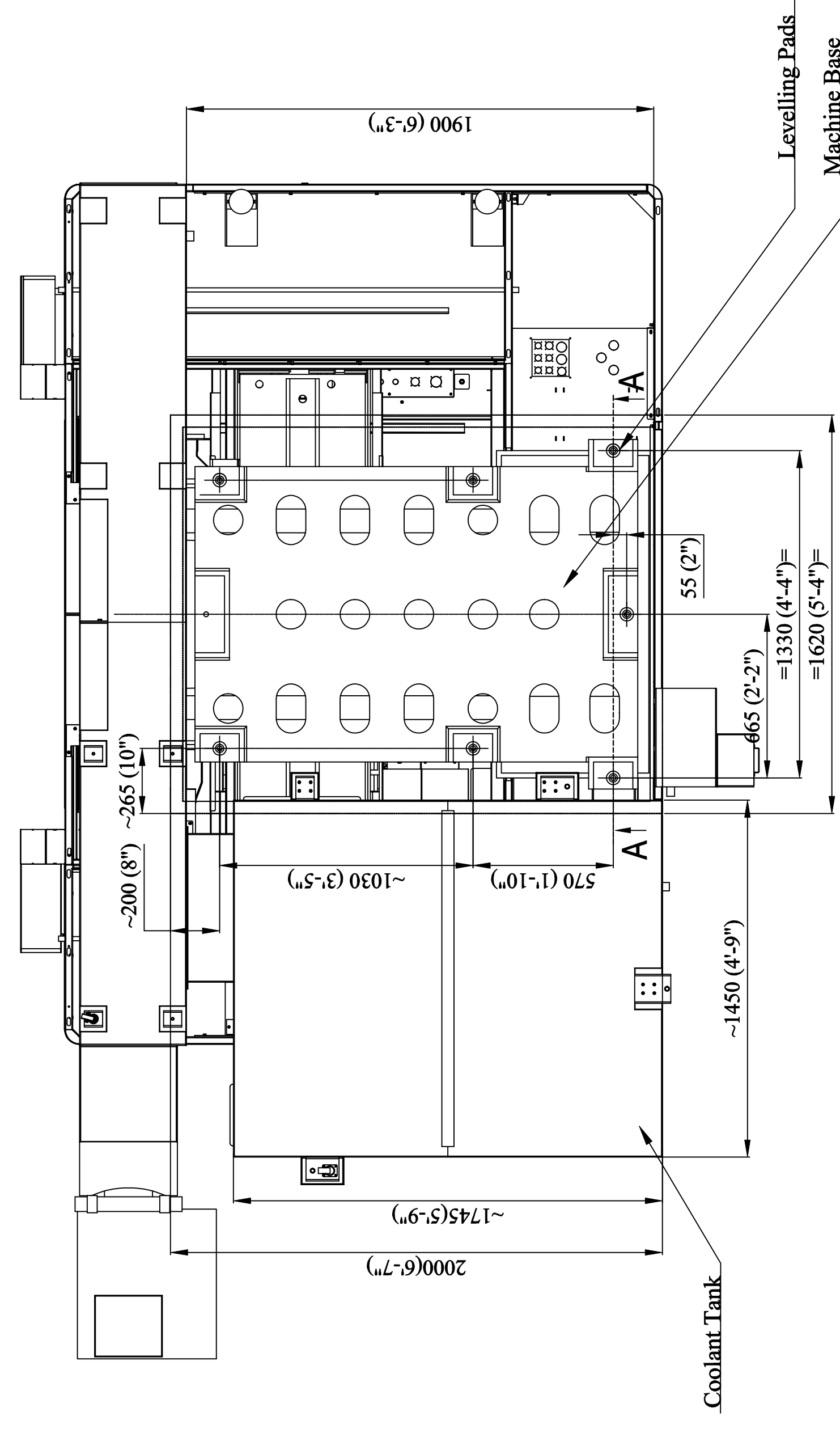
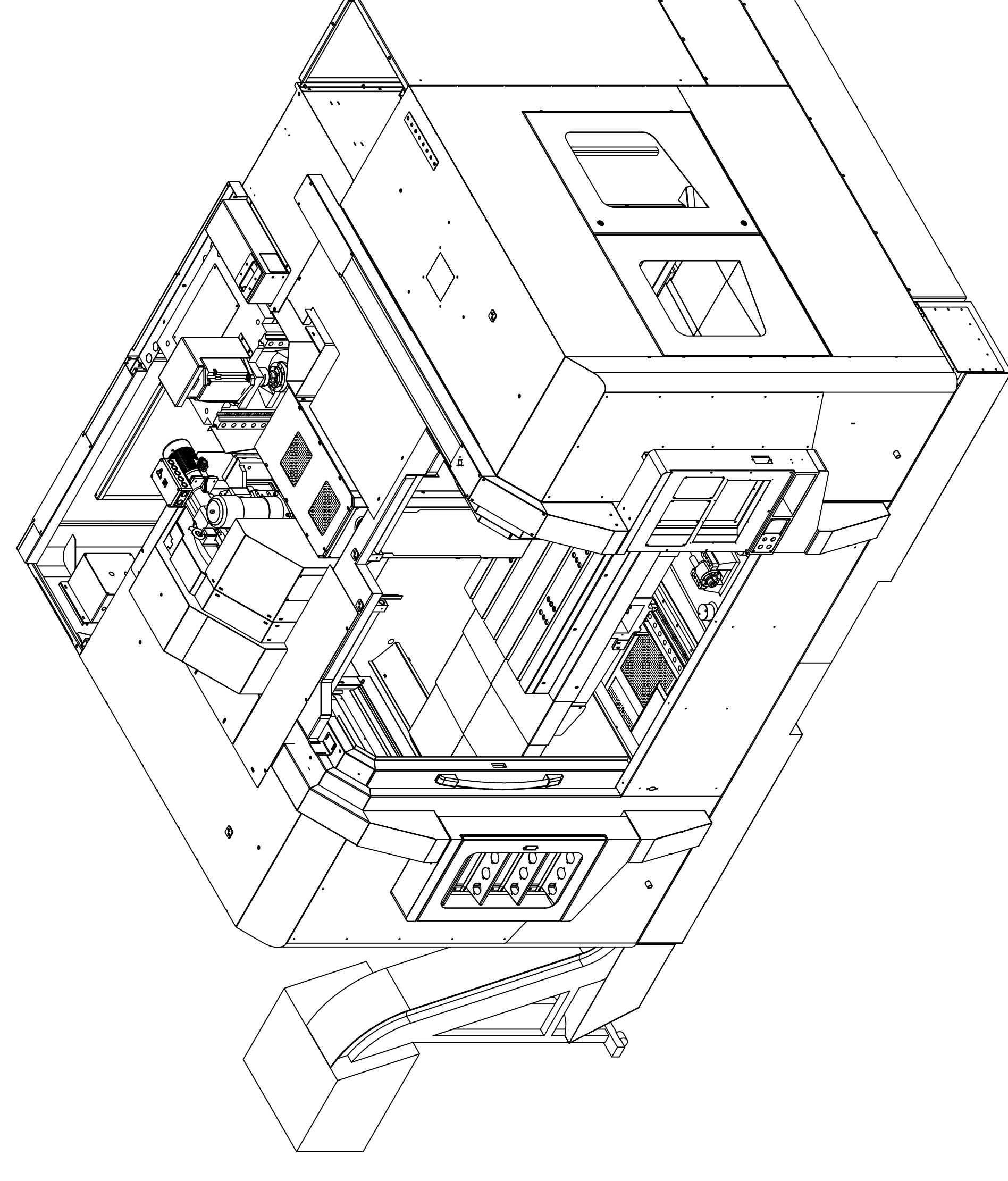


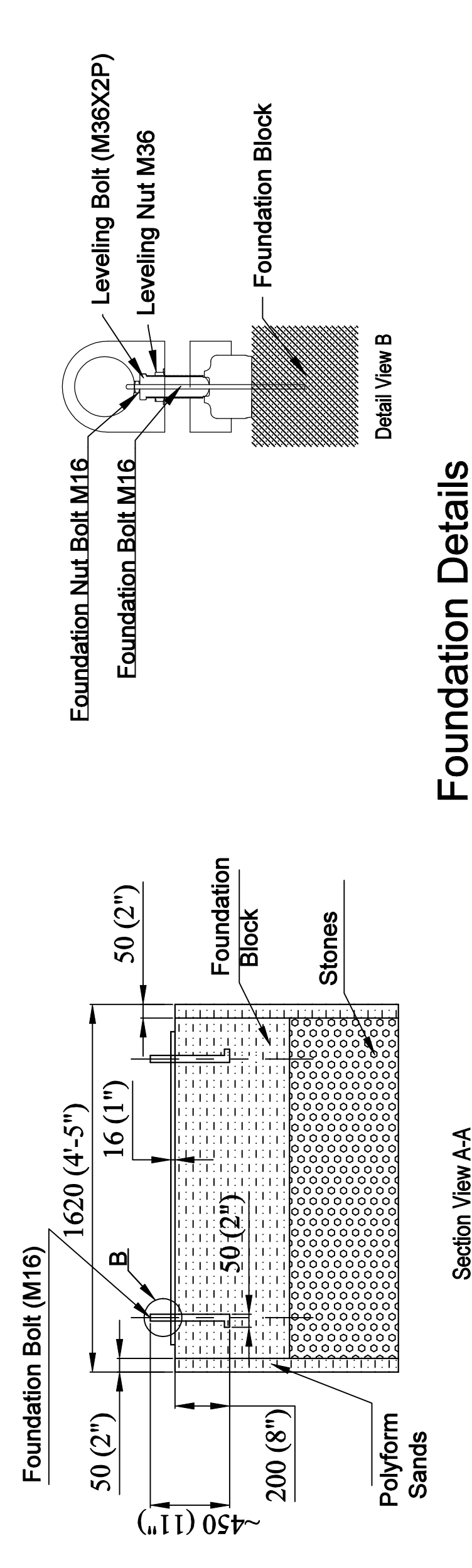
**SMART**  
MACHINE TOOL

**SV5**

**Installation  
Packet**



**NOTE :-**  
 1) ALL DIMENSIONS ARE SPECIFIED IN MM. (METRIC).  
 2) IN ( ) SPECIFIED DIMENSIONS ARE IN INCHES (IMPERIAL) FOR REFERENCE ONLY.

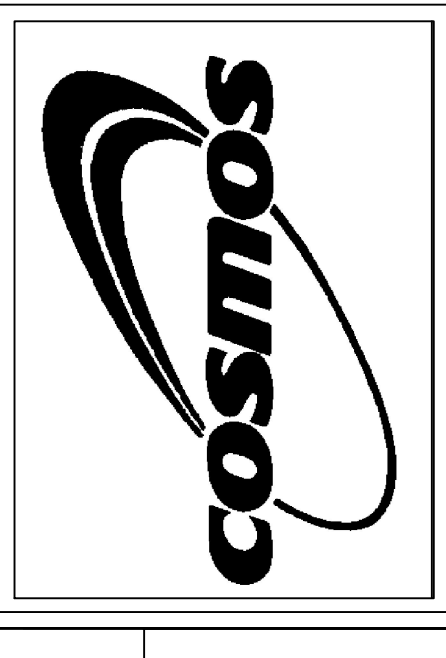


Foundation Details

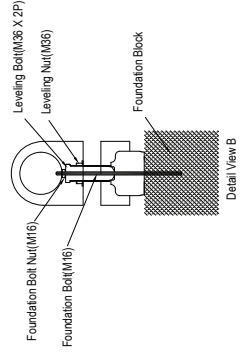
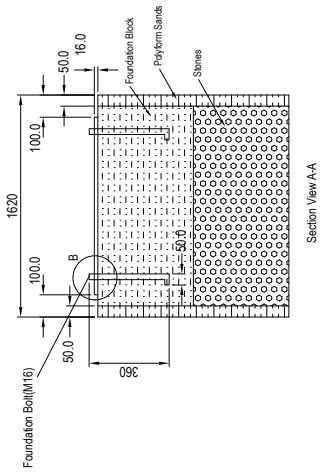
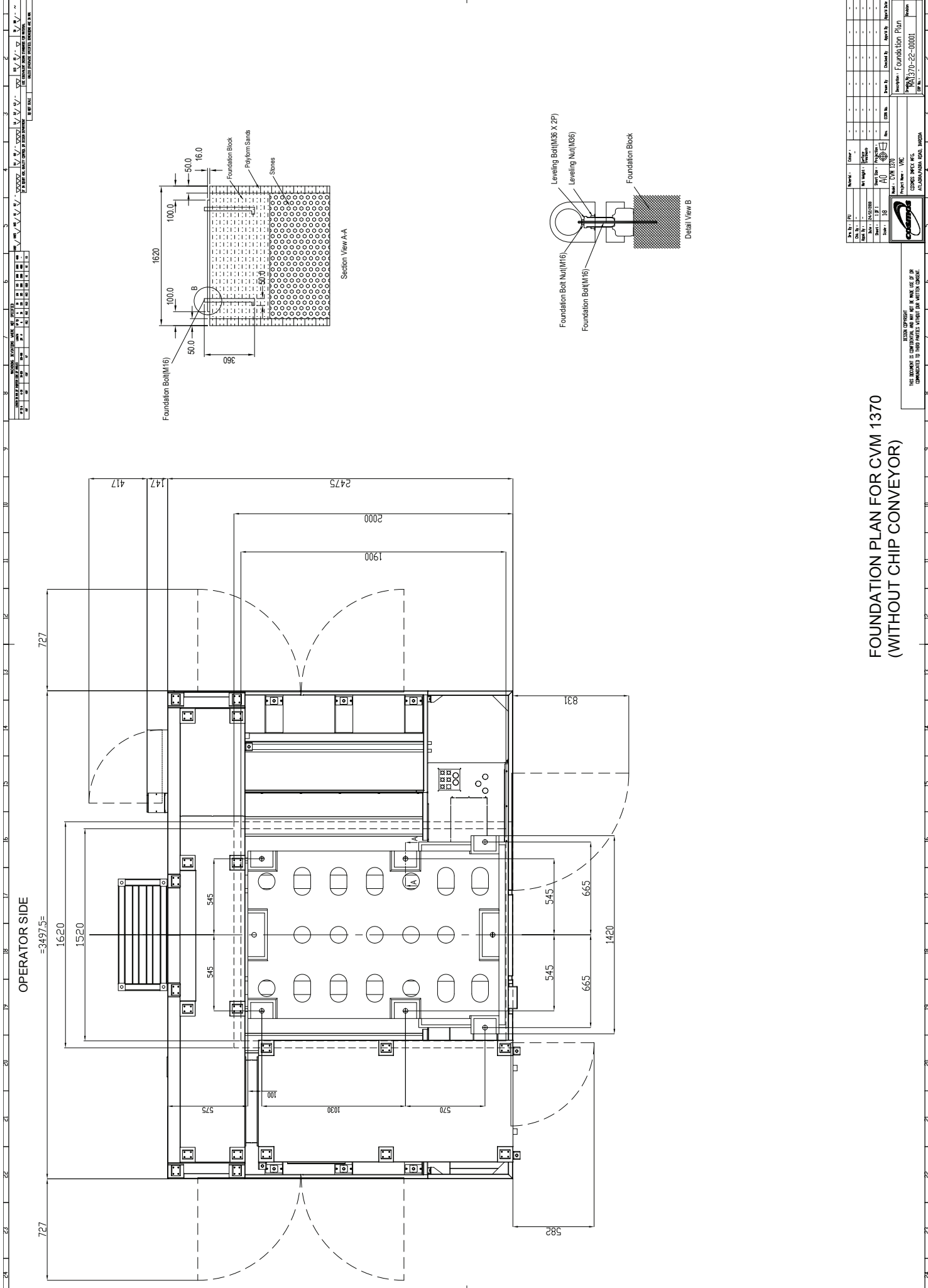
Drawn By : SB	Material : N/A	Colour : N/A	Rev.	Drawn By	Checked By	Appv'd By	Appv'd Date
Chk. By : AS	Net weight : N/A	Sheet Size : A2	Projection : 1st Angle				
Appd. By : AS	Date : 15-10-2024	Sheet : 1 OF 1	Scale : 1:35				
Description :							

Model : SV - 5  
 Project Name : VMC  
 COSMOS IMPEX MFG.  
 ATLAJARA, PADRA ROAD, BARODA

Revision : 00  
 Drawing No. : V105C22109  
 ERP No. :



DESIGN COPYRIGHT  
 THIS DOCUMENT IS CONFIDENTIAL AND MAY NOT BE MADE USE OF OR  
 COMMUNICATED TO THIRD PARTIES WITHOUT OUR WRITTEN CONSENT.



OPERATOR SIDE  
=3457.5=

**FOUNDATION PLAN FOR CVM 1370  
(WITHOUT CHIP CONVEYOR)**

No.	Date	Rev.	By	Checked By	Scale	Sheet No.	Total No.
1							
2							
3							
4							
5							
6							
7							
8							
9							
10							
11							
12							
13							
14							
15							
16							
17							
18							
19							
20							
21							
22							
23							
24							

ISSUED WITHOUT  
REVISIONS TO THE DRAWING  
UNLESS SPECIFICALLY  
NOTED OTHERWISE



Project Name: CVM 1370  
Company: VMC  
City: CHENNAI  
State: TAMIL NADU, INDIA

Description: Foundation Plan  
Drawing No.: MA/370-22-0001  
Date: 12/12/12

# Installation, Operation & Maintenance Manual

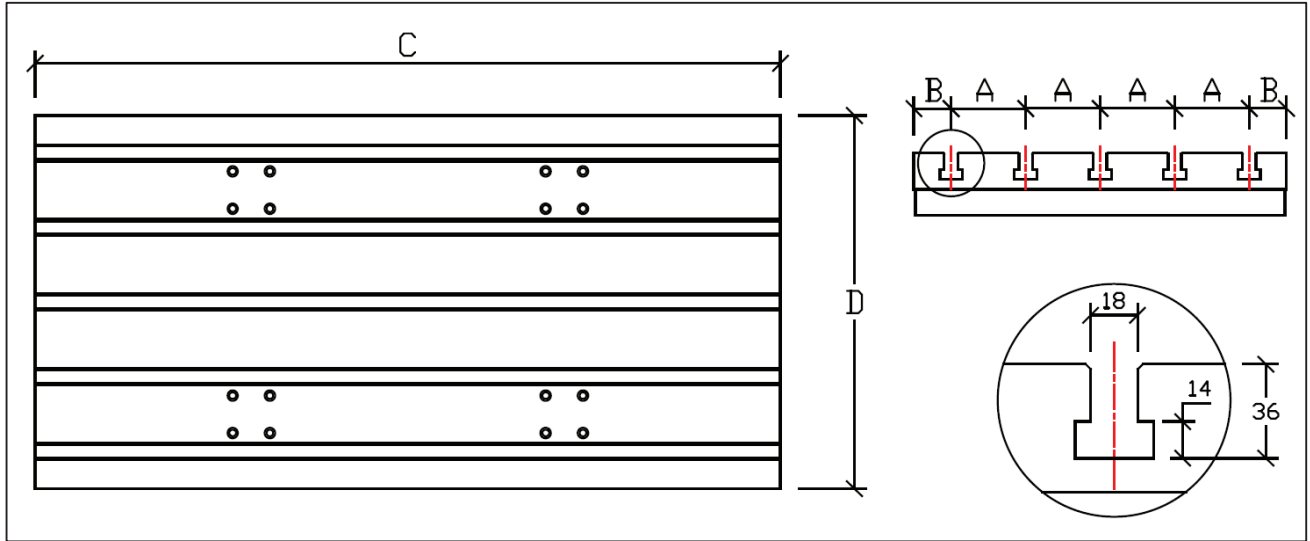
Specifications	Unit	SV-1	SV-2	SV-3	SV-5
<b>Installation Data</b>					
<b>Net Weight (with ATC)</b>	<b>Kg</b>	3400	4800	6100	8500
<b>Power Capacity (AMPS @ 220V)</b>	<b>kVA</b>	20(52A)	40(105A)	40(105A)	40(105A)
<b>Air Supply (Pressure   Flow rate)</b>	-	6 Bar   200LPM	6 Bar   200LPM	6 Bar   200LPM	6 Bar   200LPM
<b>Power Supply</b>	-	220V, +/- 10% 3Phase	220V, +/- 10% 3Phase	220V, +/- 10% 3Phase	220V, +/- 10% 3Phase

Note: Actual amp draw is dependent on actual measured voltage and machine usage. KVA is calculated with all motors at full amp draw.

SV5 shipping dimensions  
194" x 111" x 114"

23,810 lbs

Tool changer is mounted from the factory but needs to be raised

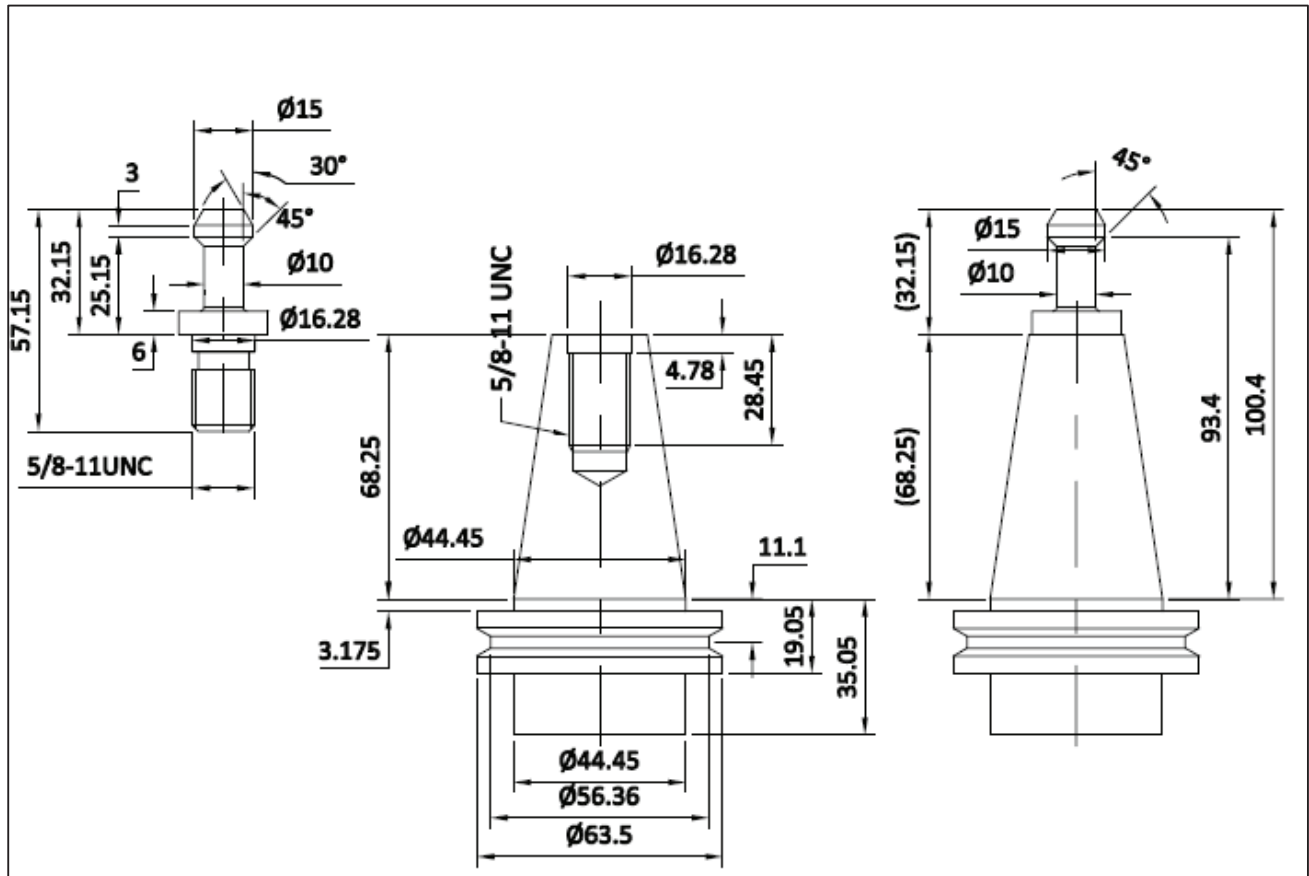


**Table Dimension - SV Series**

	SV-1	SV-2	SV-3	SV-4	SV-5
<b>A</b>	80	100	100	125	125
<b>B</b>	65	50	50	50	75
<b>C</b>	750	1000	1150	1450	1450
<b>D</b>	450	500	500	600	650

## Pull Stud Information

### CAT 40 Pull Stud and Tool holder

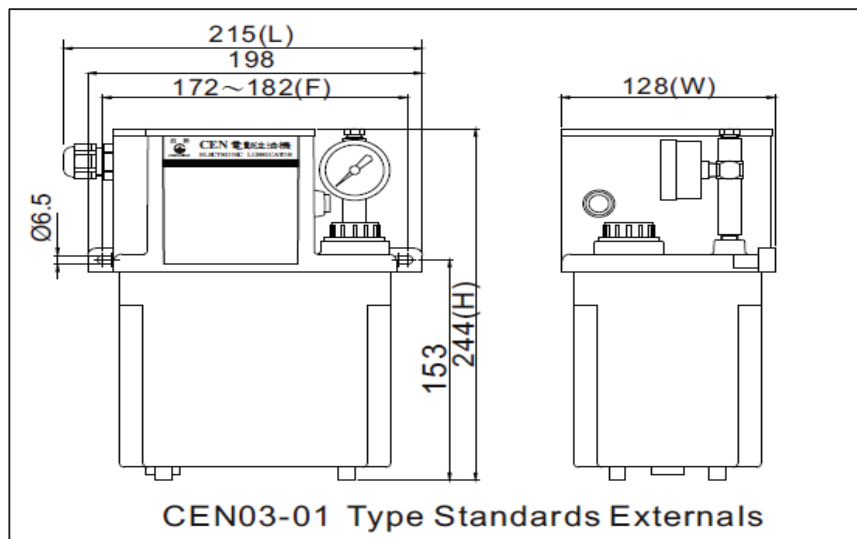


## Points to be lubricated and brands of oil

Sl. No.	Parts to be lubricated	ISO Grade	IOC	HP	CASTROL	BPCL
01	X/Y/ Z - axis Guideways & Ball screws	VG68	SERVO WAY 68	WAY LUB 68	Meghna BD 68	Motomol 68
02	Spindle Oil chiller	VG32	SERVO SYSTEM 32 SER (Required at install if added on)	ENKLO 32	Hyspin AWS 32	Hydrol S 32
03	ATC gearbox	VG150	SERVO MESH SP150	Parthen EP 150	Alpha SP 150	Amocam oil 150
04	4th Axis	VG150	SERVO MESH SP150	Parthen EP 150	Alpha SP 150	Amocam oil 150
05	FRL	VG32	SERVO SYSTEM 32 SER	ENKLO 32	Hyspin AWS 32	Hydrol S 32

## Lubrication System

- Centralized is used for lubrication on for LM guide and ball screw of all 3 axes.
- Interval for lubrication: Controlled by PLC (Settable by user).



# Removing machine from skid

