

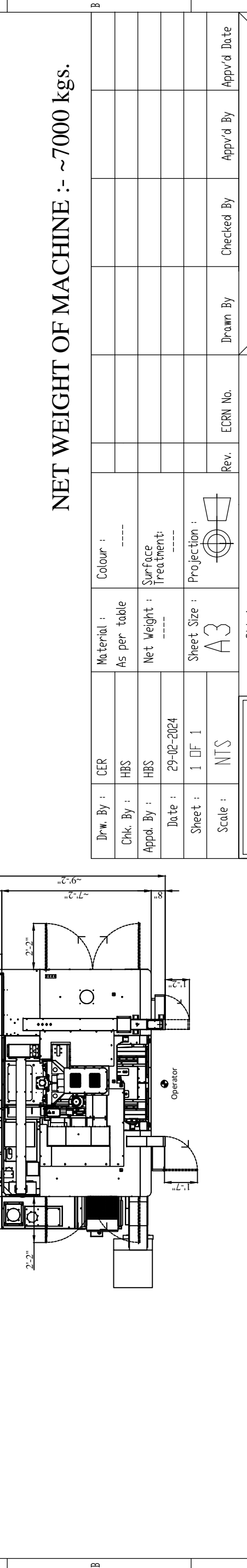
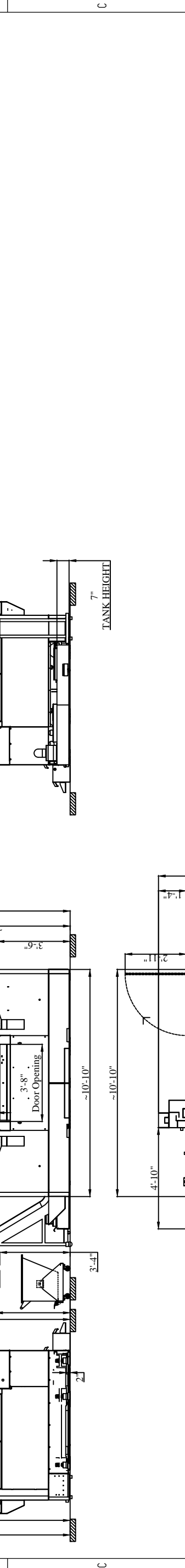
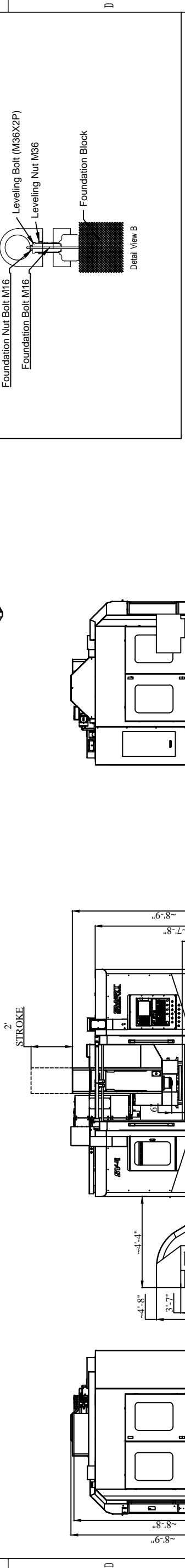
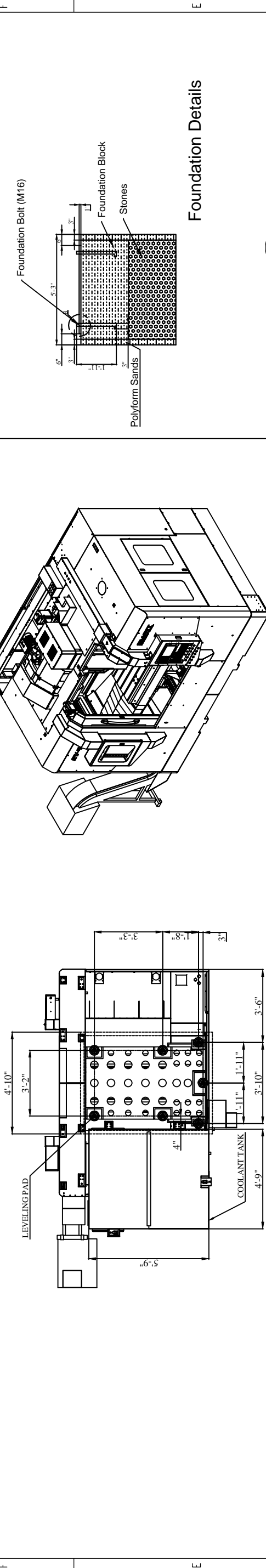
SMART
MACHINE TOOL

SV4

**Installation
Packet**

8		7		6		5		4		3		2		1	
LENGTH IN MM. OF SHORTER SIDE OF ANGLES		MACHINING DEVIATIONS WHERE NOT SPECIFIED		UP TO 6		UP TO 10		0.012		0.025		0.05		0.1	
6-30	±20'	30-120	±30'	6	±0.1	6	±0.2	30	±0.3	30	±0.5	120	±0.8	1000	±1
120-400	±1"	120-400	±1"	6	±0.1	6	±0.2	30	±0.3	30	±0.5	120	±0.8	2000	±2
				6	±0.1	6	±0.2	30	±0.3	30	±0.5	120	±0.8	4000	±3

IF IN DOUBT ASK, QUALITY CONTROL OR DESIGN DEPARTMENT
 USE EQUIVALENT INDIAN STANDARDS FOR MATERIAL
 UNLESS OTHERWISE SPECIFIED, DIMENSIONS ARE IN MM.
 DO NOT SCALE



NET WEIGHT OF MACHINE :- ~7000 kgs.

Drw. By :	CER	Material :	As per table	Colour :	----
Chk. By :	HBS	Net Weight :	----	Surface Treatment :	----
Appd. By :	HBS	Sheet Size :	A3	Projection :	
Date :	29-02-2024	Scale :	NTS	Rev.	
Sheet :	1 OF 1	ECRN No.		Checked By	
		Appv'd By		Appv'd Date	

Model : SV-4
 Project Name : CVM
 COSMOS IMPEX MFG.
 ATLADRA, PADRA ROAD, BARUDA

DESIGN COPYRIGHT
 THIS DOCUMENT IS CONFIDENTIAL AND MAY NOT BE MADE USE OF OR
 COMMUNICATED TO THIRD PARTIES WITHOUT OUR WRITTEN CONSENT.

Installation, Operation & Maintenance Manual

Specifications	Unit	SV-1	SV-2	SV-3	SV-4
Installation Data					
Net Weight (with ATC)	Kg	3400	4800	6100	7054
Power Capacity (AMPS @ 220V)	kVA(A)	20(52A)	40(105A)	40(105A)	40(105A)
Air Supply (Pressure Flow rate)	-	6 Bar 200LPM	6 Bar 200LPM	6 Bar 200LPM	6 Bar 200LPM
Power Supply	-	220V, +/- 10% 3Phase	220V, +/- 10% 3Phase	220V, +/- 10% 3Phase	220V, +/- 10% 3Phase

Note: Actual amp draw is dependent on actual measured voltage and machine usage. KVA is calculated with all motors at full amp draw.

Shipping dimensions

Machine:

183"x90"x101"

15,873 lbs

Accessories:

69"x48"x25"

1763 lbs

Tool changer is mounted from the factory, but needs to be raised

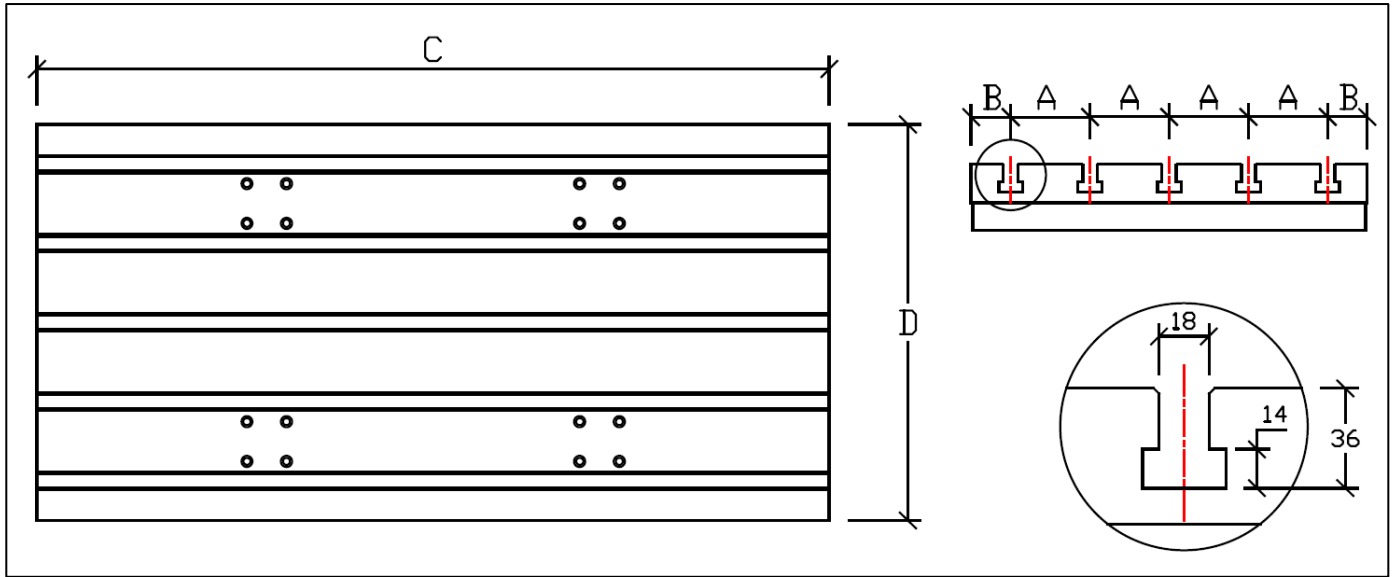
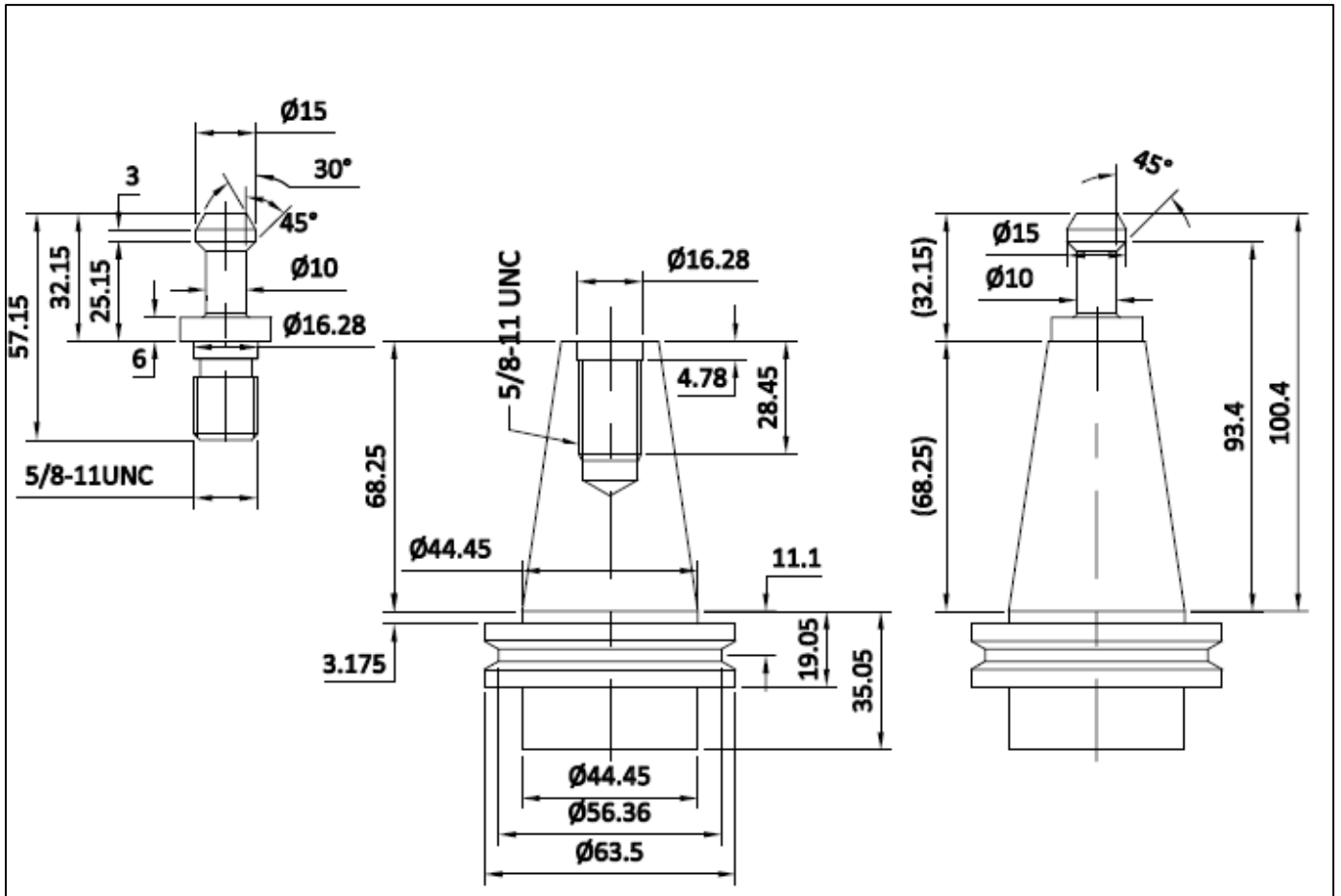


Table Dimension - SV Series

	SV-1	SV-2	SV-3	SV-4	SV-5
A	80	100	100	125	125
B	65	50	50	50	75
C	750	1000	1150	1450	1450
D	450	500	500	600	650

Pull Stud Information

CAT 40 Pull Stud and Tool holder



Points to be lubricated and brands of oil

Sl. No.	Parts to be lubricated	ISO Grade	IOC	HP	CASTROL	BPCL
01	X/Y/ Z - axis Guideways & Ball screws	VG68	SERVO WAY 68	WAY LUB 68	Meghna BD 68	Motomol 68
02	Spindle Oil chiller	VG32	SERVO SYSTEM 32 SER (Required at install if added on)	ENKLO 32	Hyspin AWS 32	Hydrol S 32
03	ATC gearbox	VG150	SERVO MESH SP150	Parthen EP 150	Alpha SP 150	Amocam oil 150
04	4th Axis	VG150	SERVO MESH SP150	Parthen EP 150	Alpha SP 150	Amocam oil 150
05	FRL	VG32	SERVO SYSTEM 32 SER	ENKLO 32	Hyspin AWS 32	Hydrol S 32

Lubrication System

- Centralized is used for lubrication on for LM guide and ball screw of all 3 axes.
- Interval for lubrication: Controlled by PLC (Settable by user).

