

SMART
MACHINE TOOL

SV4

**Installation
Packet**

Installation, Operation & Maintenance Manual

Specifications	Unit	SV-4
Installation Data		
Net Weight (with ATC)	LB	15,550
Power Capacity (AMPS @ 220V)	kVA(A)	10(105A)
Air Supply (Pressure Flow rate)	-	90 PSI 200LPM
Power Supply	-	220V, +/- 10% 3Phase

Note: Actual amp draw is dependent on actual measured voltage and machine usage. KVA is calculated with all motors at full amp draw.

Shipping dimensions

Machine:

183"x90"x101"

17,873 lbs

Tool changer is mounted from the factory, but needs to be raised

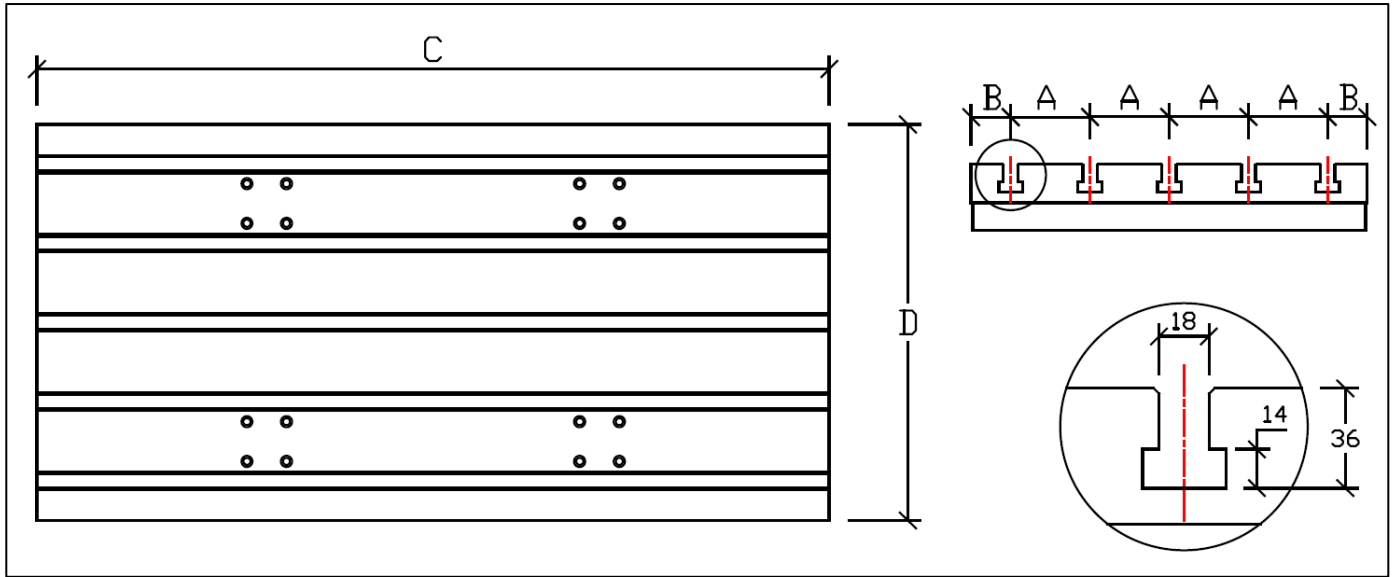


Table Dimension - SV Series

	SV-4
A	125
B	50
C	1450
D	600

Points to be lubricated and brands of oil

Sl. No.	Parts to be lubricated	ISO Grade	IOC	HP	CASTROL	BPCL
01	X/Y/ Z - axis Guideways & Ball screws	VG68	SERVO WAY 68	WAY LUB 68	Meghna BD 68	Motomol 68
02	Spindle Oil chiller	VG32	SERVO SYSTEM 32 SER (Required at install if added on)	ENKLO 32	Hyspin AWS 32	Hydrol S 32
03	ATC gearbox	VG150	SERVO MESH SP150	Parthen EP 150	Alpha SP 150	Amocam oil 150
04	4th Axis	VG150	SERVO MESH SP150	Parthen EP 150	Alpha SP 150	Amocam oil 150
05	FRL	VG32	SERVO SYSTEM 32 SER	ENKLO 32	Hyspin AWS 32	Hydrol S 32

Lubrication System

- Centralized is used for lubrication on for LM guide and ball screw of all 3 axes.
- Interval for lubrication: Controlled by PLC (Settable by user).

