

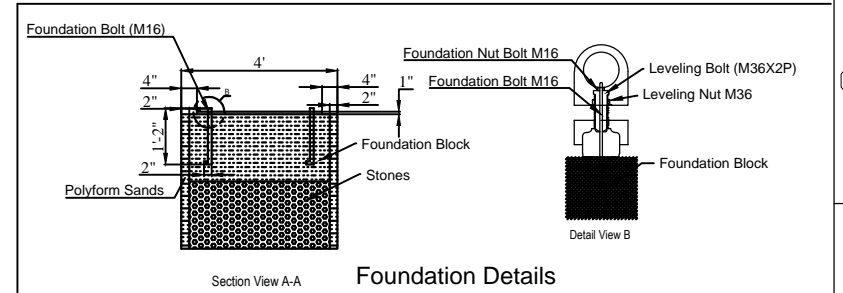
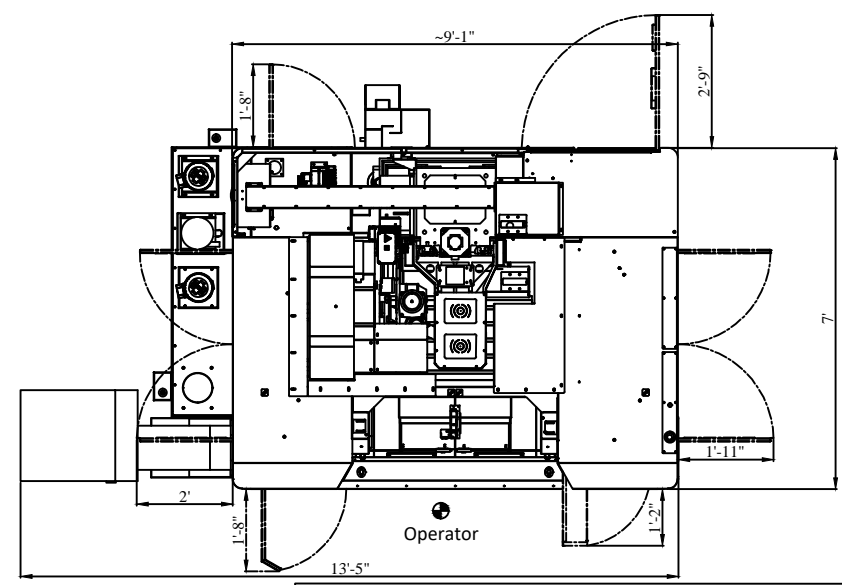
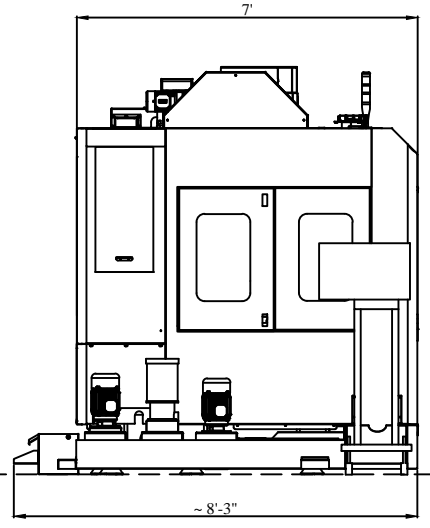
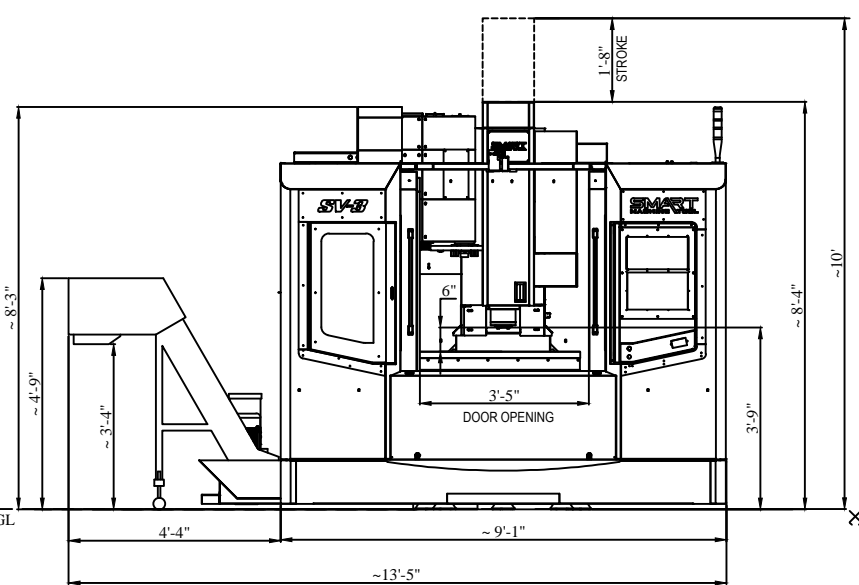
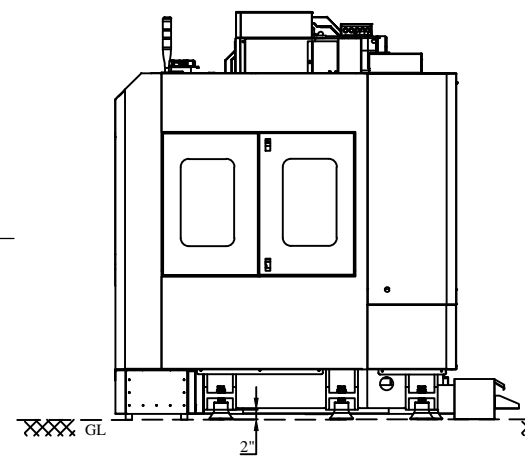
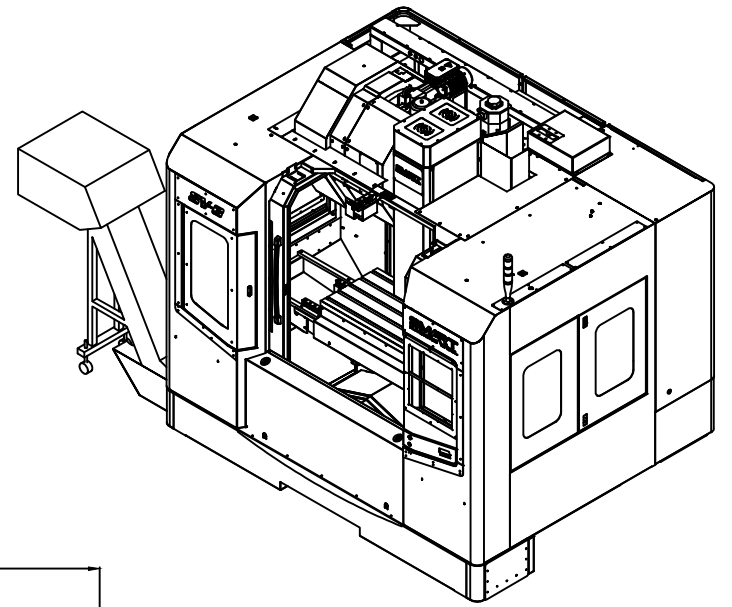
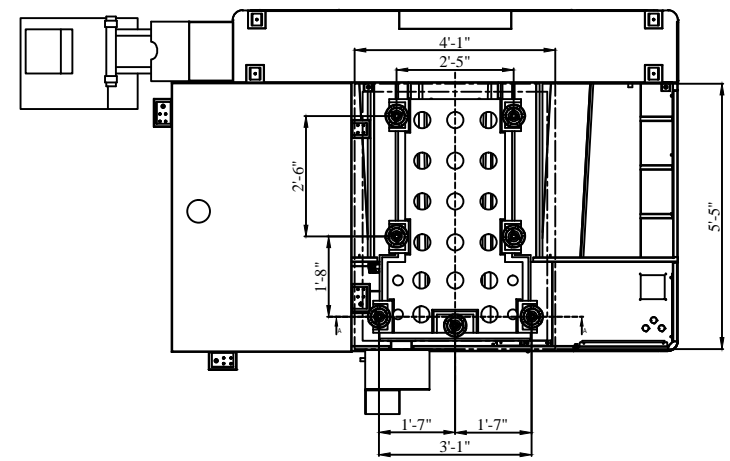
SMART
MACHINE TOOL

SV3

**Installation
Packet**

MACHINING DEVIATIONS WHERE NOT SPECIFIED										
LENGTH IN MM. OF SHORTER SIDE OF ANGLES				LENGTH OR Ø	UP TO					
UP TO 6	6-30	30-120	120-400		6	30	120	315	1000	4000
±0.1	±0.2	±0.3	±0.4	±0.1	±0.2	±0.3	±0.5	±0.8	±1	±2

0.012	0.025	0.05	0.1	0.2	-	0.4	0.8	-	1.6	3.2	6.3	-	12.5	25	-	50	100	-	
IF IN DOUBT ASK, QUALITY CONTROL OR DESIGN DEPARTMENT										USE EQUIVALENT INDIAN STANDARDS FOR MATERIAL									
DO NOT SCALE																			



ALL DIMENSIONS ARE IN INCHES

DESIGN COPYRIGHT
THIS DOCUMENT IS CONFIDENTIAL AND MAY NOT BE MADE USE OF OR COMMUNICATED TO THIRD PARTIES WITHOUT OUR WRITTEN CONSENT.

Draw. By :	C.E.R	Material :	Colour :							
Chk. By :	H.B.S	Net Weight :	Surface Treatment :							
Appd. By :	H.B.S	Sheet Size :	Projection :							
Date :	27-02-2024	Scale :	1:1	Rev.	ECRN No.	Drawn By	Checked By	Appv'd By	Appv'd Date	
				Model : SV-3 FD Project Name : VMC COSMOS IMPEX MFG. ATLADRA, PADRA ROAD, BARODA			Description : MACHINE LAYOUT FD WITH SCRAPER CONVEYOR W/D DRUM Drawing No : V110B22002 ERP No. :			Revision : 00

Installation, Operation & Maintenance Manual

Specifications	Unit	SV-1	SV-2	SV-3	SV-5
Installation Data					
Net Weight (with ATC)	Kg	3400	4800	6100	8500
Power Capacity (AMPS @220V)	KVA(A)	20(52A)	40(105A)	40(105A)	40(105A)
Air Supply (Pressure Flow rate)	-	6 Bar 200LPM	6 Bar 200LPM	6 Bar 200LPM	6 Bar 200LPM
Power Supply	-	220V, +/- 10% 3Phase	220V, +/- 10% 3Phase	220V, +/- 10% 3Phase	220V, +/- 10% 3Phase

Note: Actual amp draw is dependent on actual measured voltage and machine usage. KVA is calculated with all motors at full amp draw.

SV3 Shipping Dimensions
165x90x101 13,448lbs

Tool changer is mounted from the factory

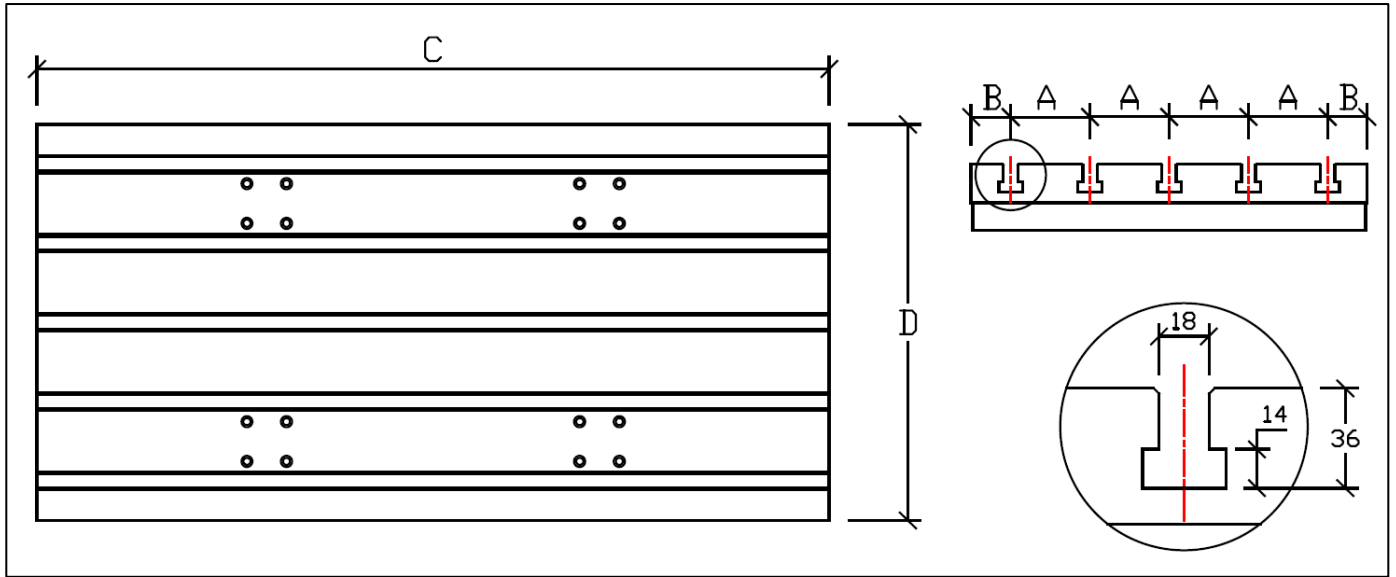
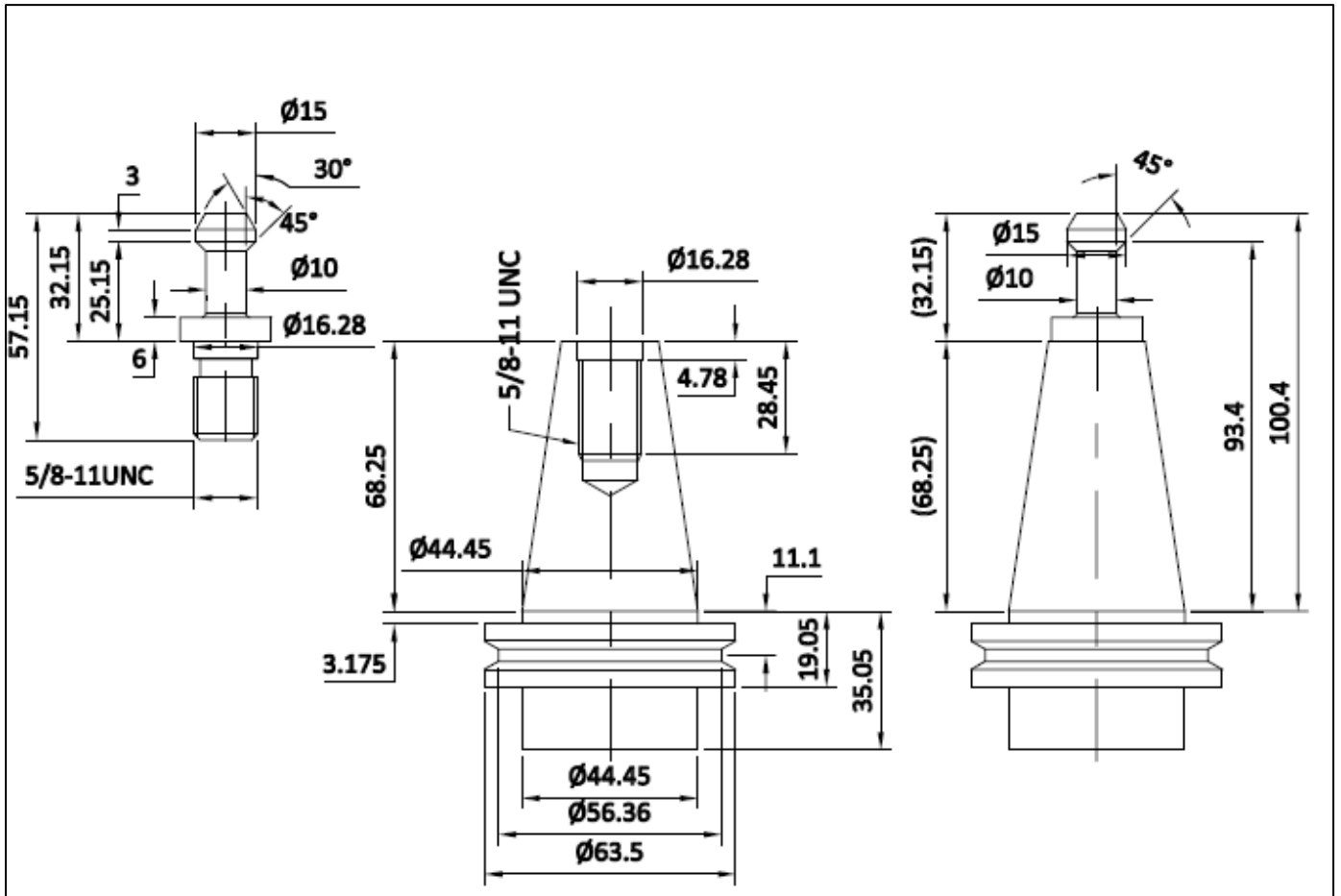


Table Dimension - SV Series

	SV-1	SV-2	SV-3	SV-4	SV-5
A	80	100	100	125	125
B	65	50	50	50	75
C	750	1000	1150	1450	1450
D	450	500	500	600	650

Pull Stud Information

CAT 40 Pull Stud and Tool holder



Points to be lubricated and brands of oil

Sl. No.	Parts to be lubricated	ISO Grade	IOC	HP	CASTROL	BPCL
01	X/Y/ Z - axis Guideways & Ball screws	VG68	SERVO WAY 68	WAY LUB 68	Meghna BD 68	Motomol 68
02	Spindle Oil chiller	VG32	SERVO SYSTEM 32 SER (Required at install if added on)	ENKLO 32	Hyspin AWS 32	Hydrol S 32
03	ATC gearbox	VG150	SERVO MESH SP150	Parthen EP 150	Alpha SP 150	Amocam oil 150
04	4th Axis	VG150	SERVO MESH SP150	Parthen EP 150	Alpha SP 150	Amocam oil 150
05	FRL	VG32	SERVO SYSTEM 32 SER	ENKLO 32	Hyspin AWS 32	Hydrol S 32

Lubrication System

- Centralized is used for lubrication on for LM guide and ball screw of all 3 axes.
- Interval for lubrication: Controlled by PLC (Settable by user).

