

**SMART**  
MACHINE TOOL

**SV2**

**Installation  
Packet**

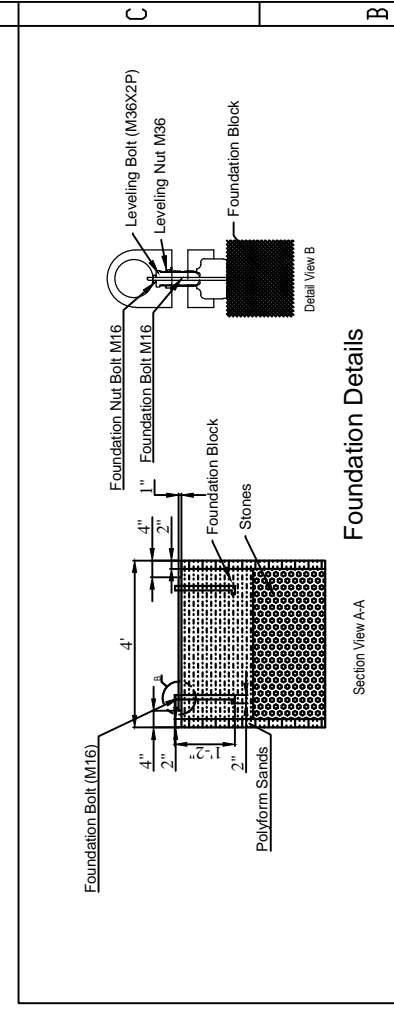
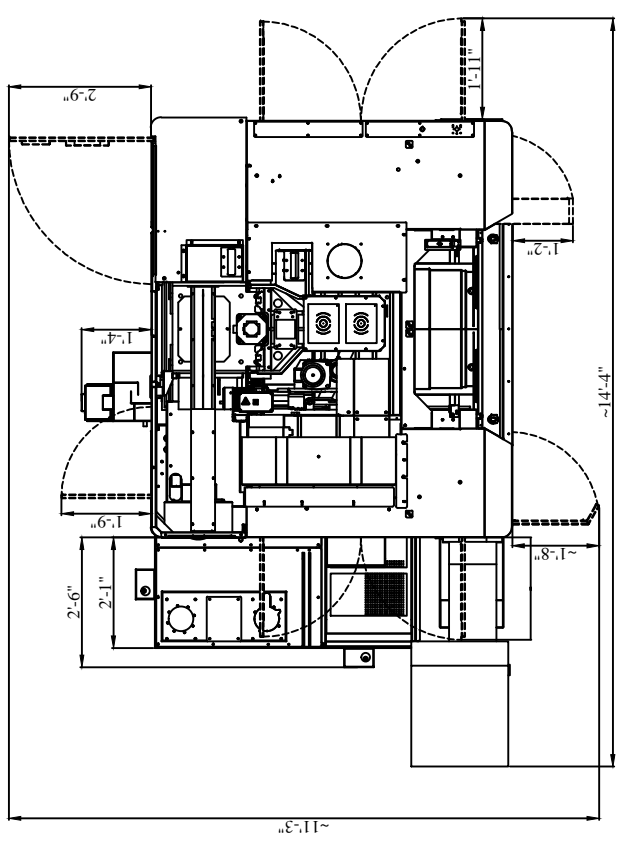
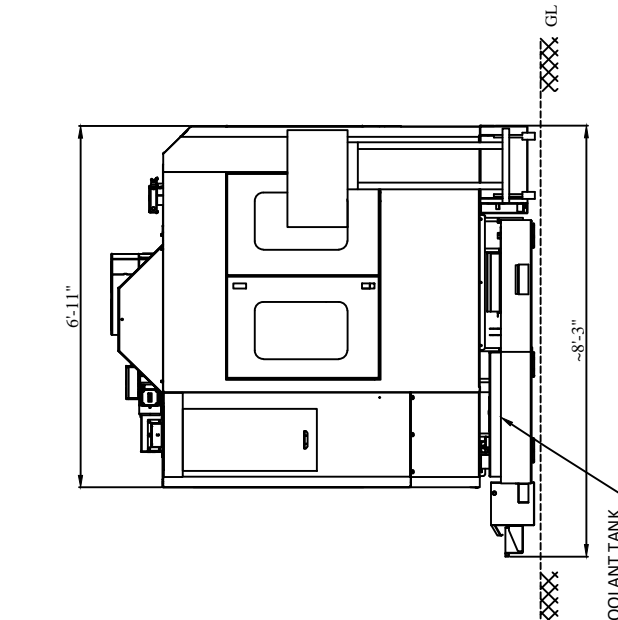
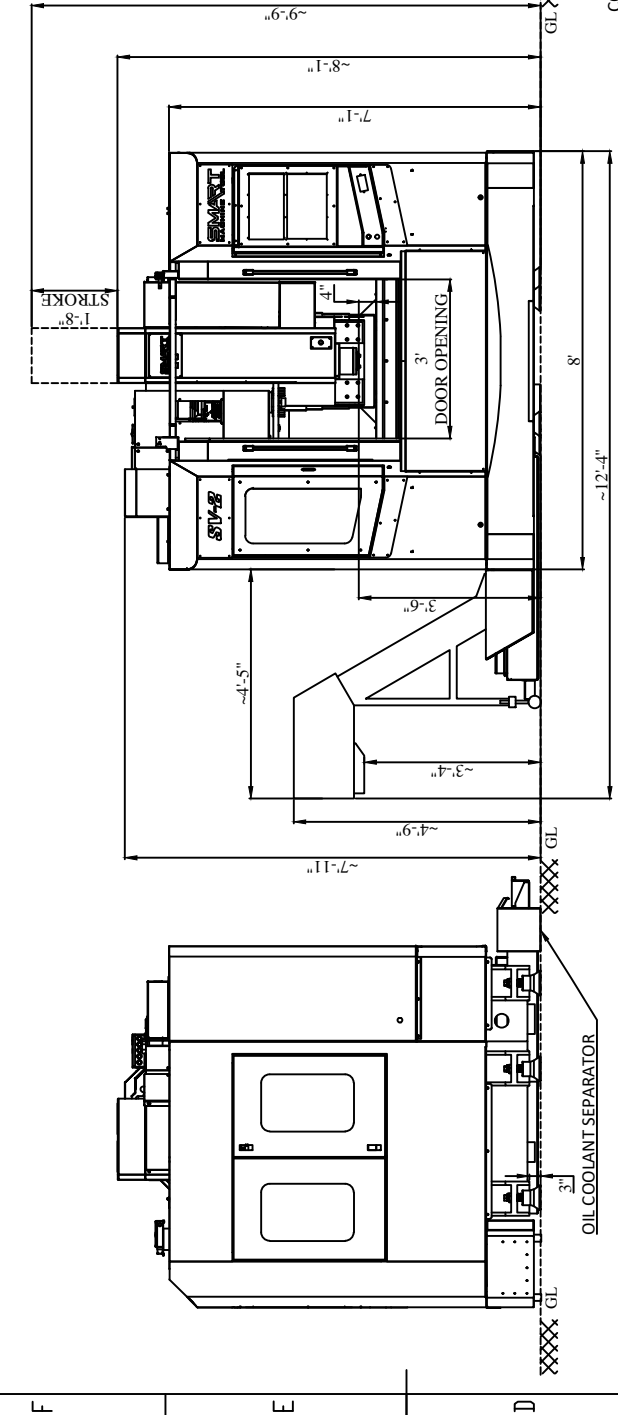
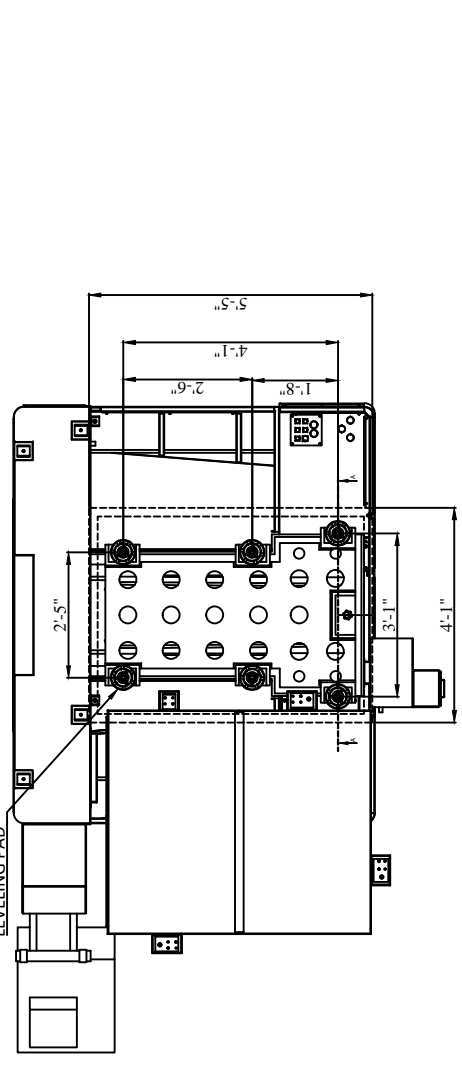
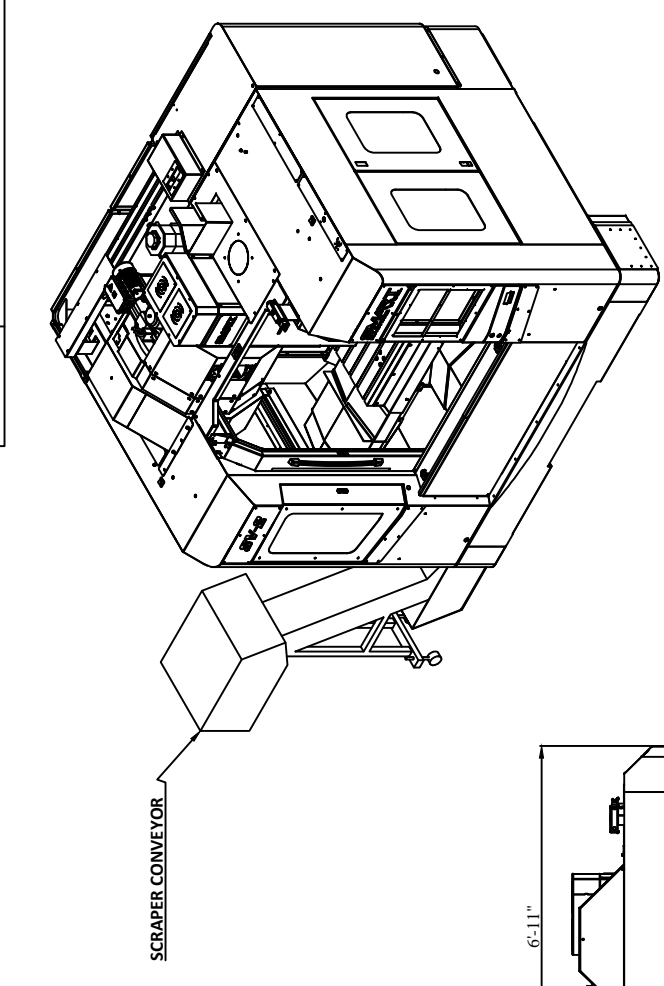
0.002	0.005	0.01	0.02	0.04	0.08	0.16	0.32	0.63	1.25	2.5	5.0	10.0
UP TO 6	6-30	30-120	120-480	480-960	960-1920	1920-3840	3840-7680	7680-15360	15360-30720	30720-61440	61440-122880	122880-245760
UP TO 6	UP TO 6	UP TO 6	UP TO 6	UP TO 6	UP TO 6	UP TO 6	UP TO 6	UP TO 6	UP TO 6	UP TO 6	UP TO 6	UP TO 6

MACHINING DEVIATIONS WHERE NOT SPECIFIED

IF IN DOUBT ASK QUALITY CONTROL OR DESIGN DEPARTMENT

USE EQUIVALENT INDIAN STANDARDS FOR MATERIAL

DO NOT SCALE



Section View A-A

Foundation Details

Drawn By :	C.E.R	Material :	Colour :
Chk. By :	HBS	Net Weight :	Surface Treatment
Appd. By :	HBS	0.000 Kgs	
Date :	27-02-2024	Sheet Size :	Projection :
Sheet :	1 OF 1	A2	
Scale :	1:1	EDRN No.	Rev.

Model : SV2

Project Name : VMC

COSMOS IMPEX MFG.

ATLADRA PADRA ROAD, BARODA

DESIGN COPYRIGHT

THIS DOCUMENT IS CONFIDENTIAL AND MAY NOT BE MADE USE OF OR COMMUNICATED TO THIRD PARTIES WITHOUT OUR WRITTEN CONSENT.

ALL DIMENSIONS ARE IN INCHES

DESCRIPTION : MACHINE LAYOUT WITH SCRAPER CONVEYOR

V/D DRUM

Drawing No : SV-2 V108I22013

Revision

ERP No. :

H G F E D C B A

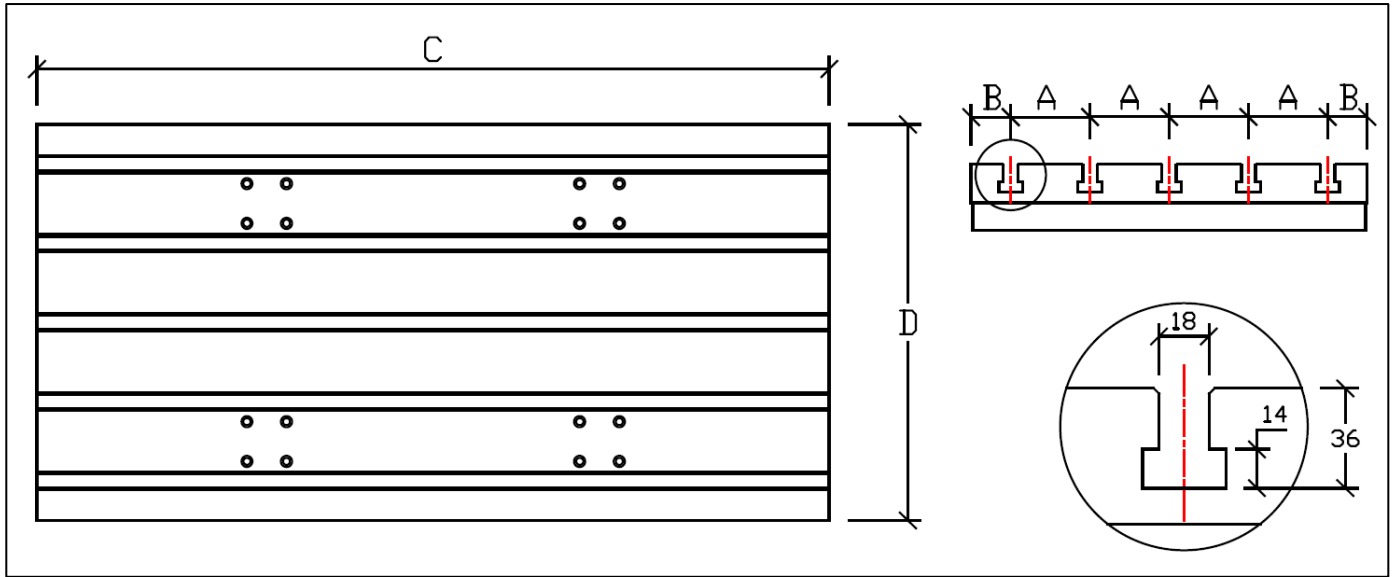
# Installation, Operation & Maintenance Manual

Specifications	Unit	SV-1	SV-2	SV-3	SV-5
<b>Installation Data</b>					
<b>Net Weight (with ATC)</b>	<b>Kg</b>	3400	4800	6100	8500
<b>Power Capacity (AMPS @ 220V)</b>	<b>KVA(A)</b>	20 (52A)	40(105A)	40(105A)	40(105A)
<b>Air Supply (Pressure   Flow rate)</b>	-	6 Bar   200LPM	6 Bar   200LPM	6 Bar   200LPM	6 Bar   200LPM
<b>Power Supply</b>	-	220V, +/- 10% 3Phase	220V, +/- 10% 3Phase	220V, +/- 10% 3Phase	220V, +/- 10% 3Phase

Note: Actual amp draw is dependent on actual measured voltage and machine usage. KVA is calculated with all motors at full amp draw.

SV2 Shipping Dimensions  
 12'10" x 7'6" x 8'6"  
 11,685 lbs

Tool changer is mounted from the factory

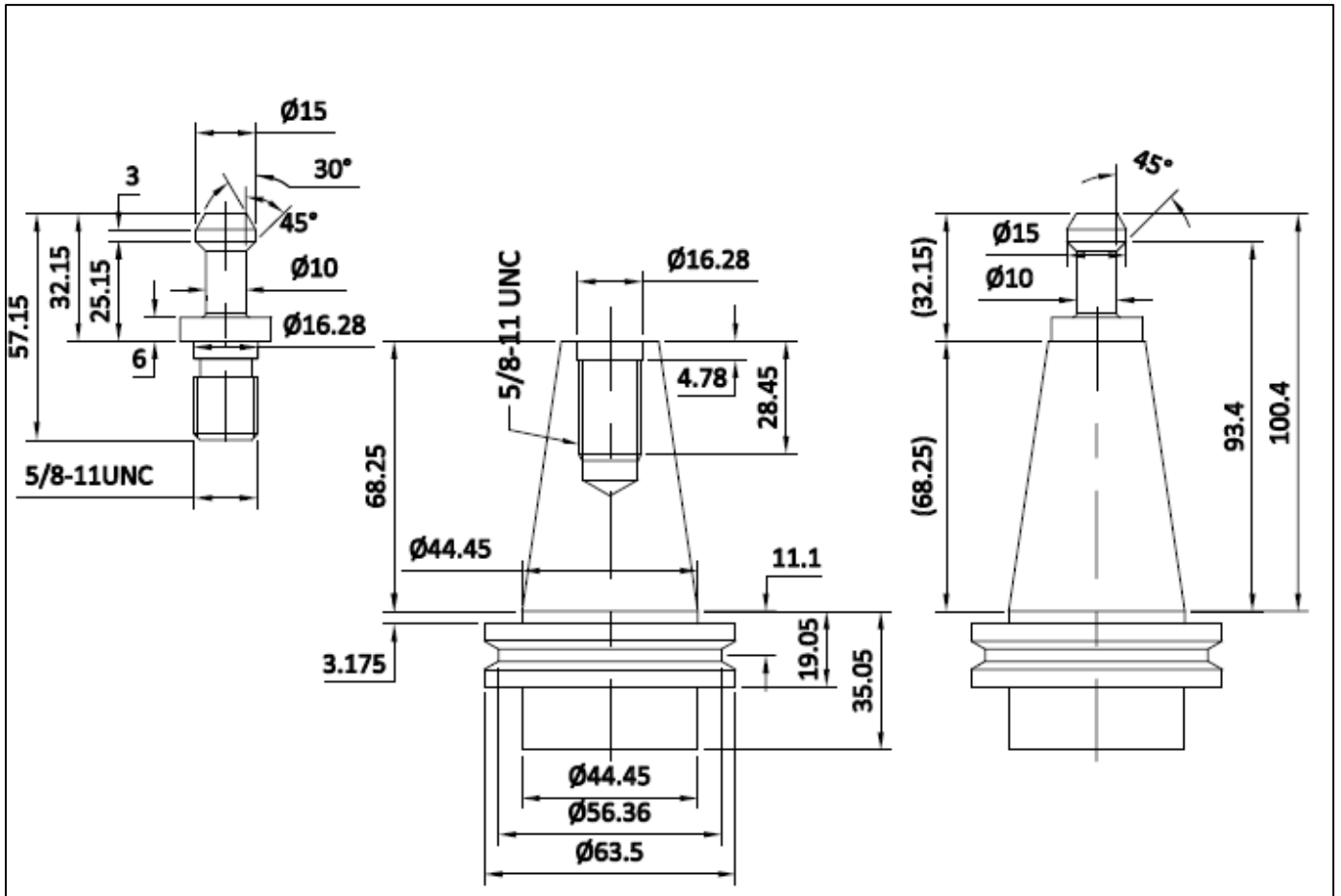


**Table Dimension - SV Series**

	<b>SV-1</b>	<b>SV-2</b>	<b>SV-3</b>	<b>SV-4</b>	<b>SV-5</b>
<b>A</b>	80	100	100	125	125
<b>B</b>	65	50	50	50	75
<b>C</b>	750	1000	1150	1450	1450
<b>D</b>	450	500	500	600	650

## Pull Stud Information

### CAT 40 Pull Stud and Tool holder



## Points to be lubricated and brands of oil

Sl. No.	Parts to be lubricated	ISO Grade	IOC	HP	CASTROL	BPCL
01	X/Y/ Z - axis Guideways & Ball screws	VG68	SERVO WAY 68	WAY LUB 68	Meghna BD 68	Motomol 68
02	Spindle Oil chiller	VG32	SERVO SYSTEM 32 SER (Required at install if added on)	ENKLO 32	Hyspin AWS 32	Hydrol S 32
03	ATC gearbox	VG150	SERVO MESH SP150	Parthen EP 150	Alpha SP 150	Amocam oil 150
04	4th Axis	VG150	SERVO MESH SP150	Parthen EP 150	Alpha SP 150	Amocam oil 150
05	FRL	VG32	SERVO SYSTEM 32 SER	ENKLO 32	Hyspin AWS 32	Hydrol S 32

## Lubrication System

- Centralized is used for lubrication on for LM guide and ball screw of all 3 axes.
- Interval for lubrication: Controlled by PLC (Settable by user).

