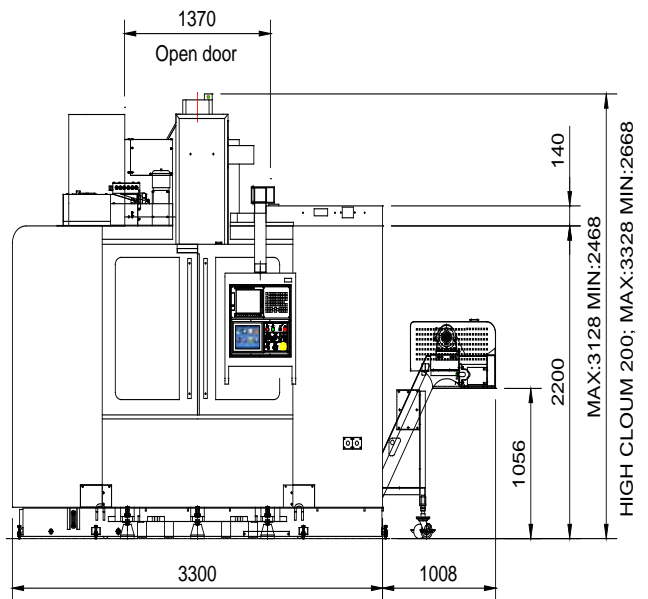
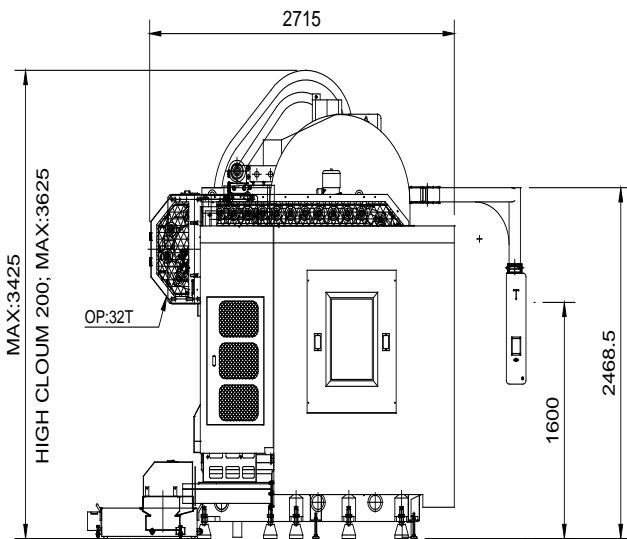
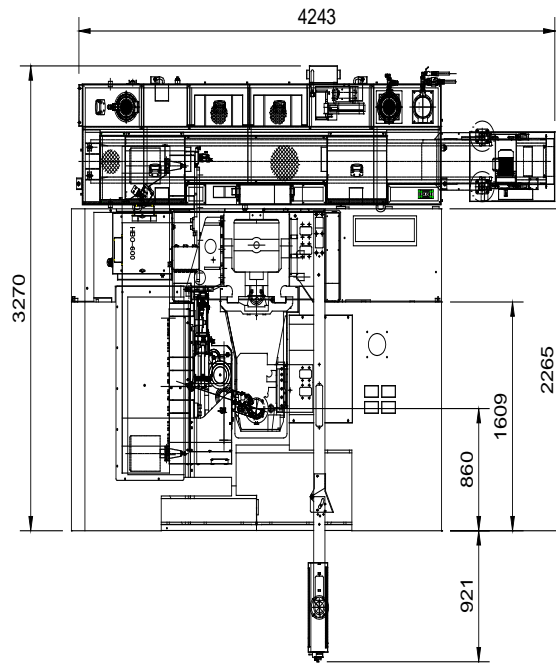




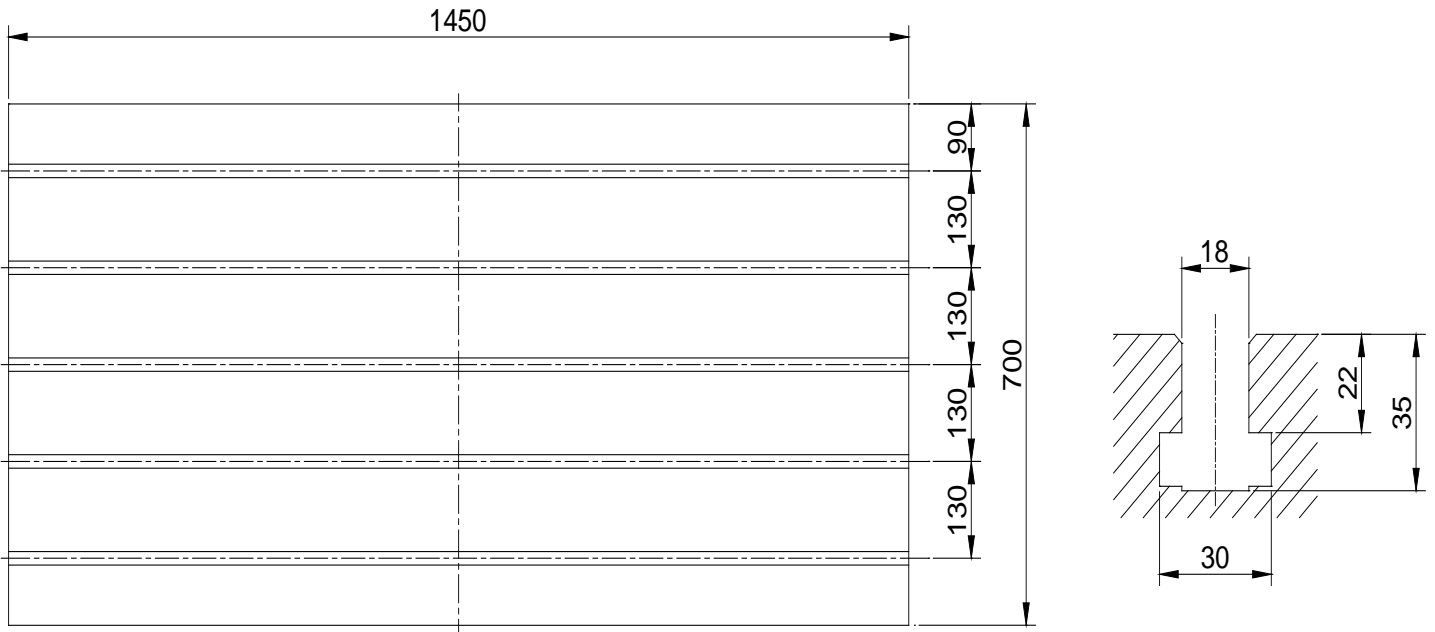
SM1370

**Installation
Packet**



*IMPORTANT NOTE
TOOL CHANGER
SHIPS NOT MOUNTED

Model	Unit	SM-1370
Table Weight	kg	388
Max. Table Load	kg	1500



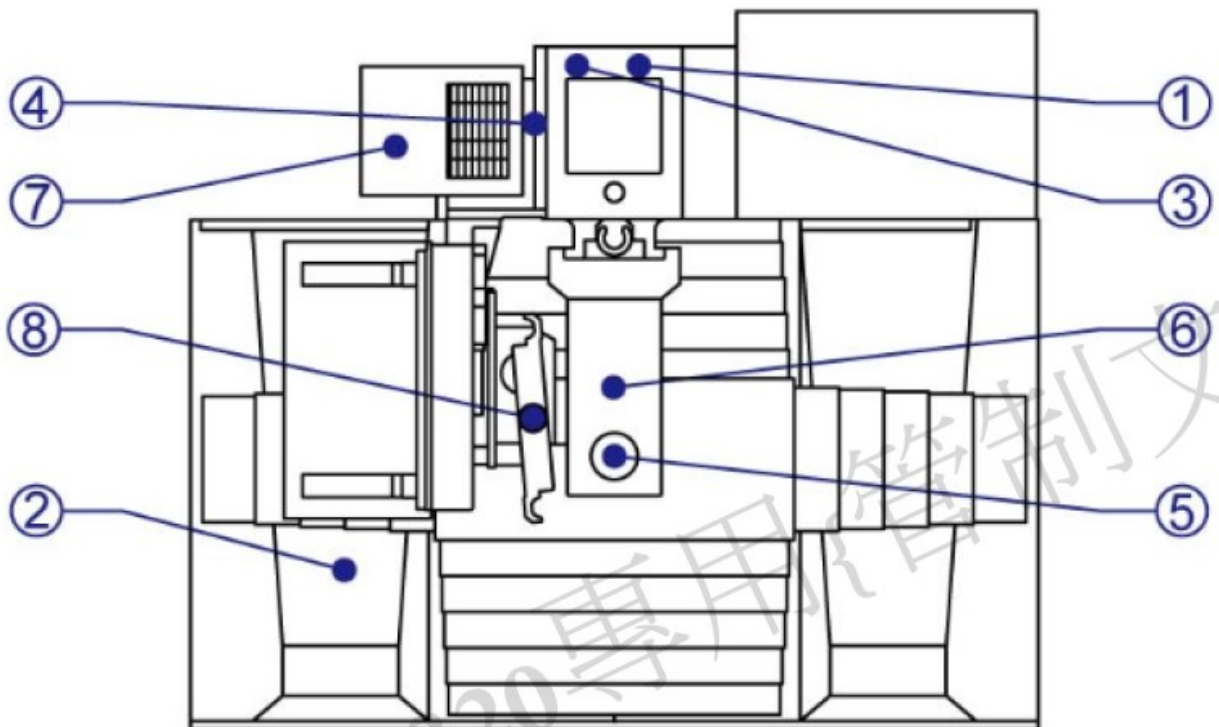
(工作台與 T 型槽尺寸圖)

1.6 主軸鼻端至工作台距離 Distance from Spindle End to Table

Model	Unit	SM-1370
Distance from Spindle End to Table (Height Between Column)	mm	120~780
Distance from Spindle End to Table Additional Column height 200mm	mm	320~980
Distance from Spindle End to Table Additional Column height 200mm	mm	520~1180
Distance from Spindle Center to Column	mm	745

	Type	Grade	Examples: (Mobil or) Shell recommended)	Required at install	Quantities
1	Regulator	ISO-VG-32	DTE LIGHT		.1L
2	Coolant tank	Customer preference	Customer preference	X	480L+280L
3	Axis Librication	ISO-VG-68	T68 Way lube		6 L
4	Hydraulic Tank	ISO-VG-32	DTE LIGHT		70L
5	Geared Headstock(50T ONLY)	ISO-VG-32	DTE 24	X	20L
6	ATC Cam box	ISO-VG-150	SHC Gear 150		4L

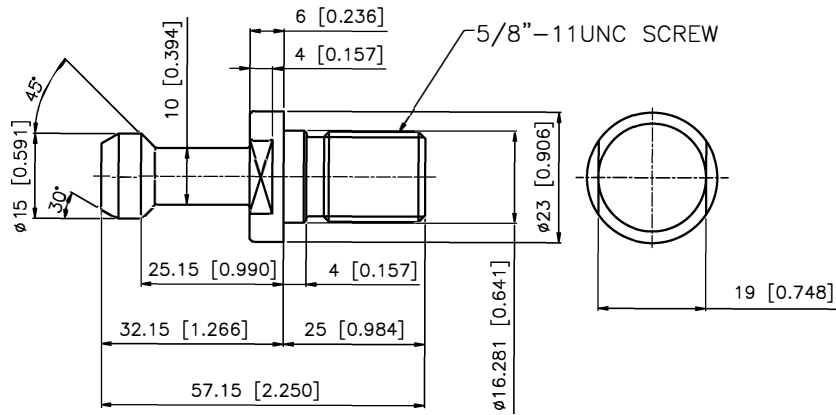
Oil Inlet 注油點位置



8112000024- 英文. 中文

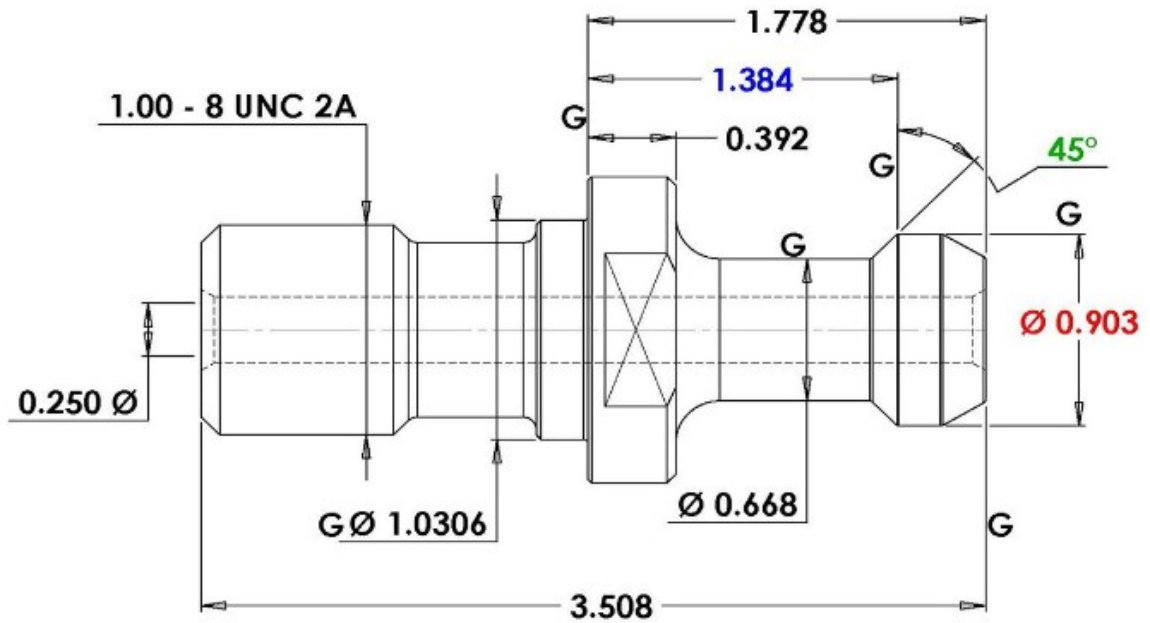
Required air pressure	KG/cm2	6.5
Electrical Power Consumption	KVA	55
	Amps @220V	144
Voltage		220 +/- 10%

#40



Lyndex PN
Non CTS
C40-4500
CTS
C40-4500H

#50
P50T-1



Trucking dimensions	
SM1050	146" x 91 x 101 @ 12,538
Accessories	156" x 46 x 79 @ 983
SM1100	146" x 91 x 101 @ 17,518
Accessories	156 x 46 x 79 @ 3,097
SM1370	: 142" x 92 x 101 @ 18,801
Accessories	177 x 46 x 79 @ 4,583
SM1570	146 x 91 x 101 @ 19,731
Accessories	191 x 91 x 79 @ 3,536
Accessories	157 x 91 x 79 @ 2,465
SM1682	
SW216	445" x 164 x 158 @ 59,305
SW316	445" x 164 x 158 @ 66,668
HSA316	445" x 164 x 158 @ 64,199