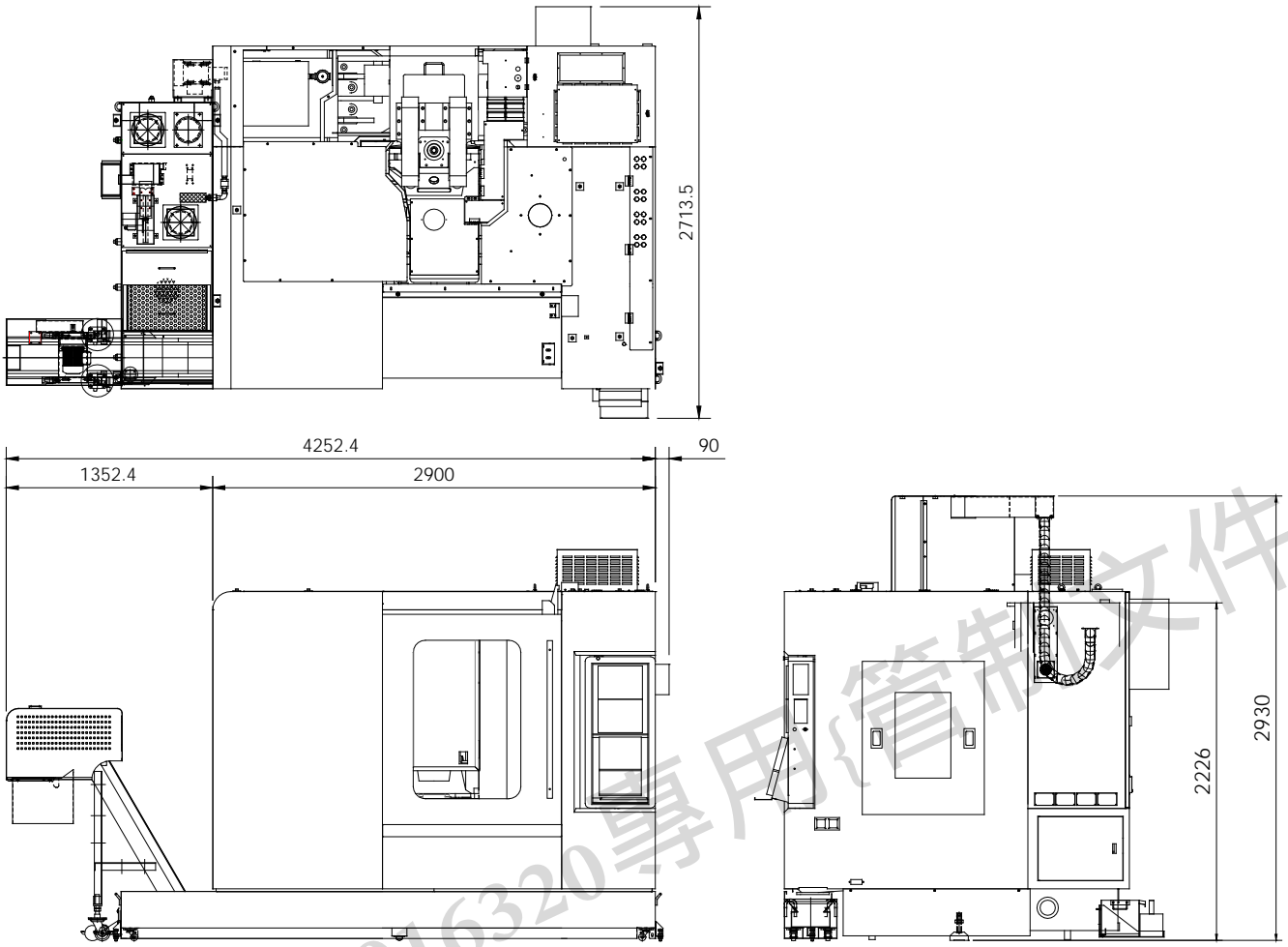




SM1100

**Installation
Packet**

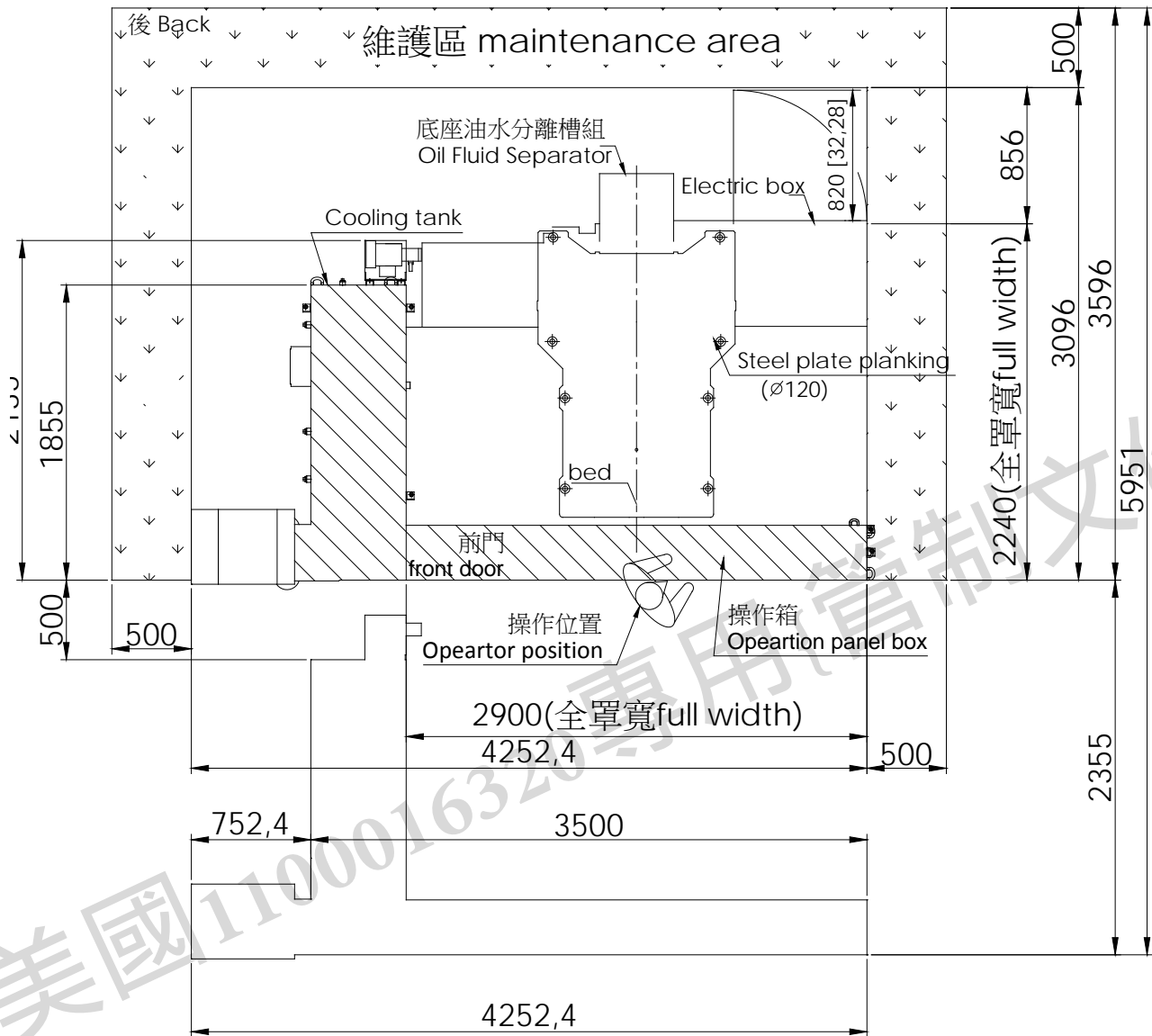
c. Link Type Chip Conveyor



*IMPORTANT NOTE
TOOL CHANGER
SHIPS NOT MOUNTED

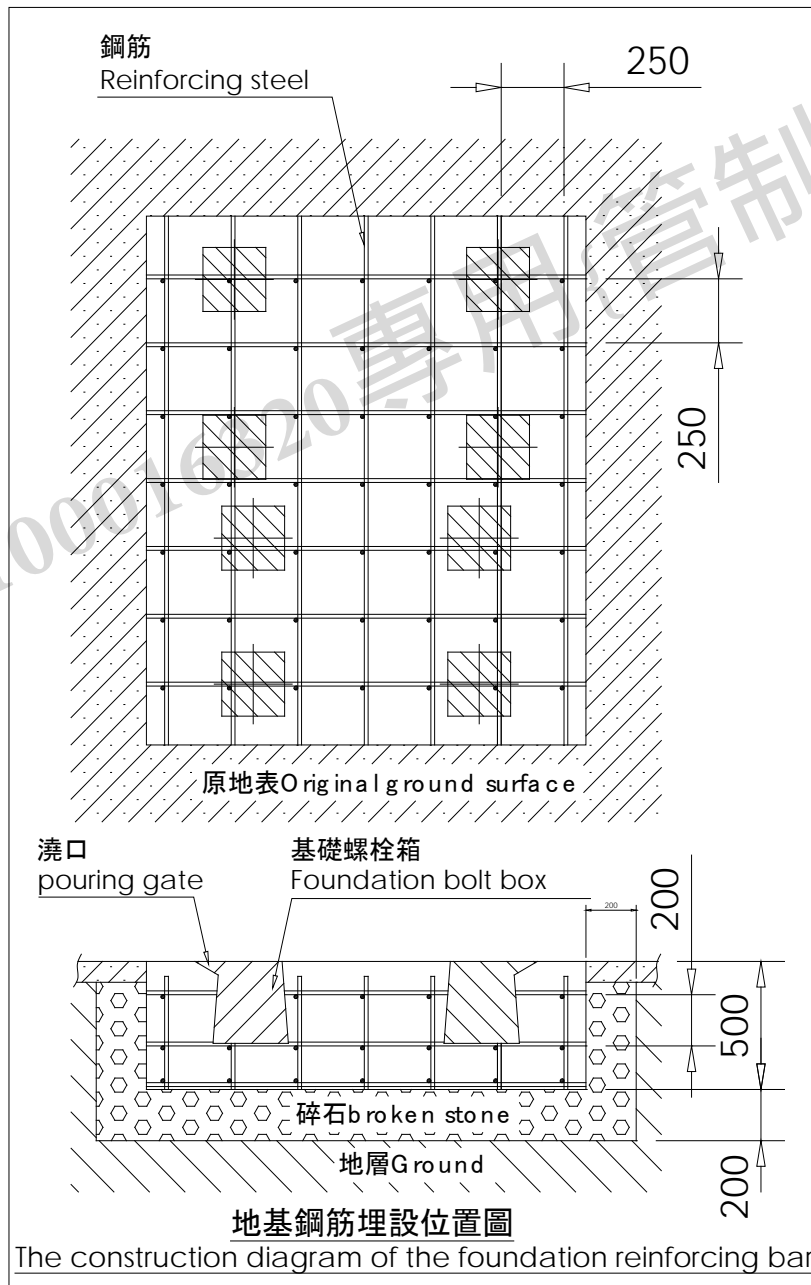
3.3.2 Link Type Chip Conveyor

HCMC-1100鐵屑輸送機水箱



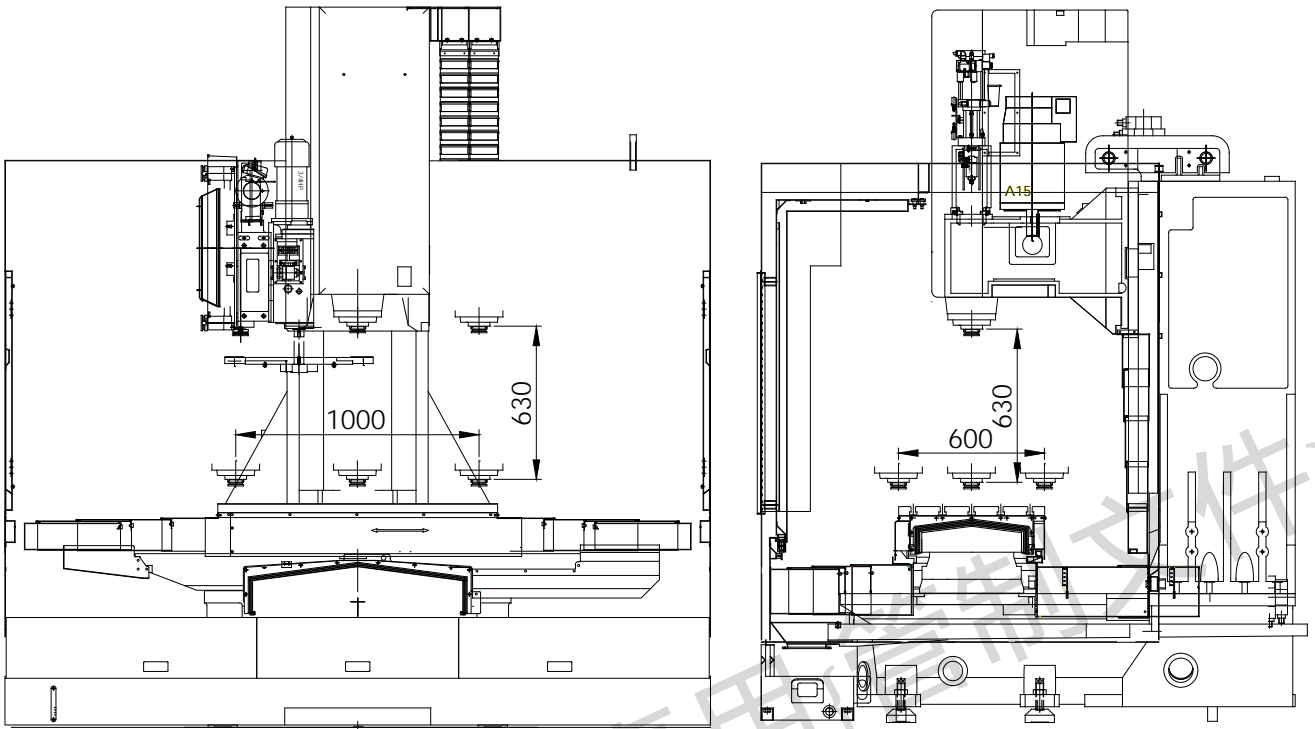
4.2.2 The construction diagram of the foundation reinforcing bar (Opt.)

- 1) The reinforcing bars are established from foundation bolt boxes, then extended outwards.
- 2) The interval between two bars is about 250mm (9.84").
- 3) The foundation is about 700mm (27.55") in depth. Establish three rows of bars within foundation, the interval between two rows is about 250mm (9.84").
- 4) The diameter of bars should be between 13mm to 19mm.
- 5) Pave the space under and around the foundation with rubble to prevent the foundation from slipping or sinking owing to the slack soil.

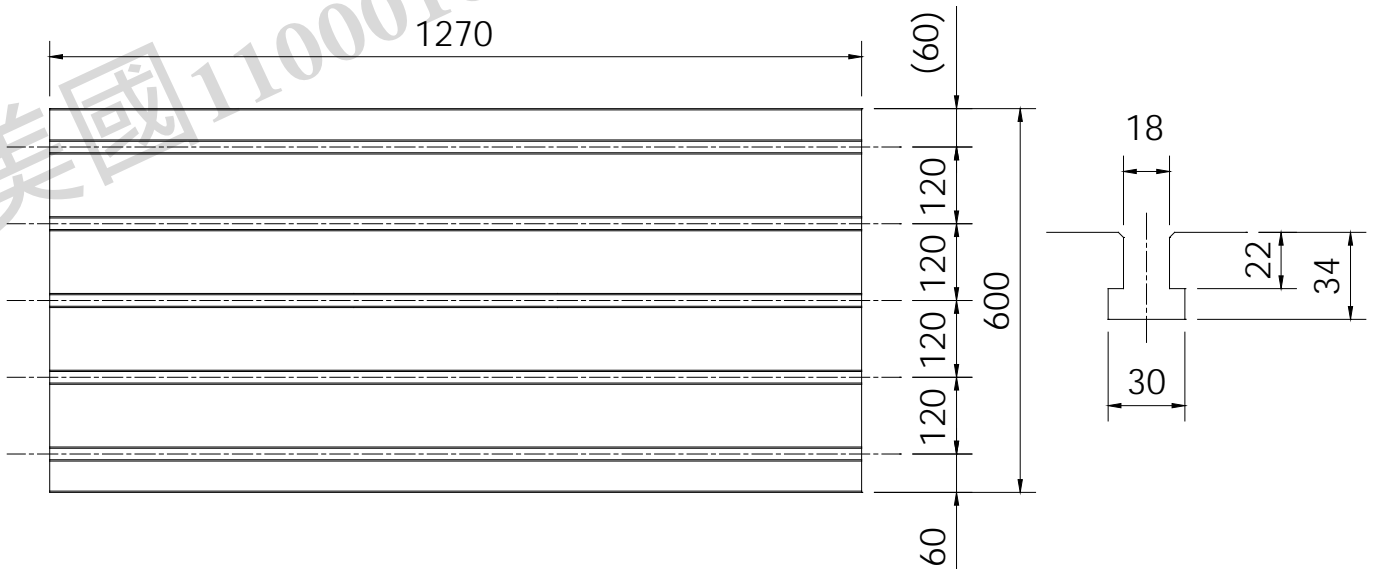


3.4 Working Range

3.4.1 Processing range

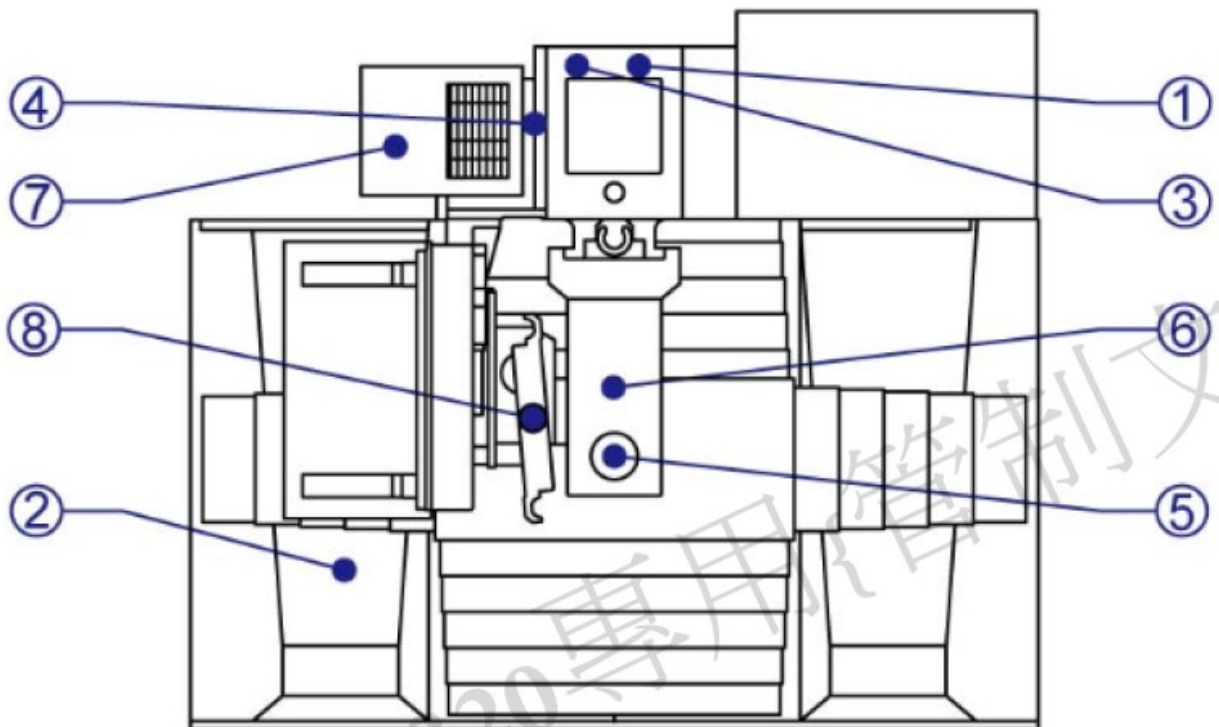


3.4.2 Table and T-Slot Size



	Type	Grade	Examples: (Mobil or) Shell recommended)	Required at install	Quantities
1	Regulator	ISO-VG-32	DTE LIGHT		.1L
2	Coolant tank	Customer preference	Customer preference	X	480L+280L
3	Axis Librication	ISO-VG-68	T68 Way lube		6 L
4	Hydraulic Tank	ISO-VG-32	DTE LIGHT		70L
5	Geared Headstock(50T ONLY)	ISO-VG-32	DTE 24	X	20L
6	ATC Cam box	ISO-VG-150	SHC Gear 150		4L

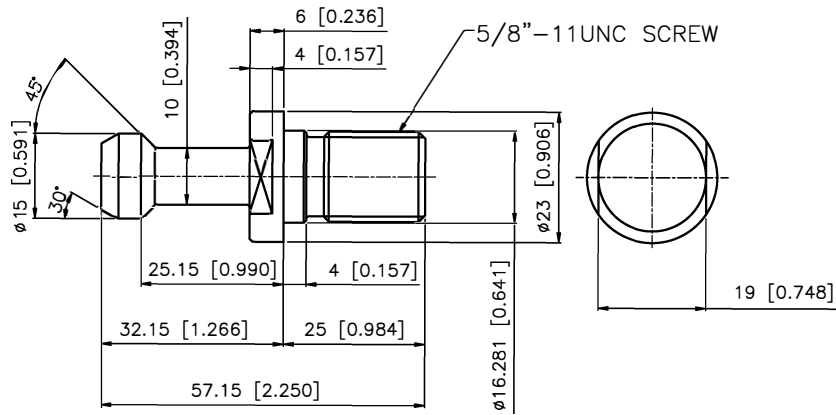
Oil Inlet 注油點位置



8112000024-英文. 中文

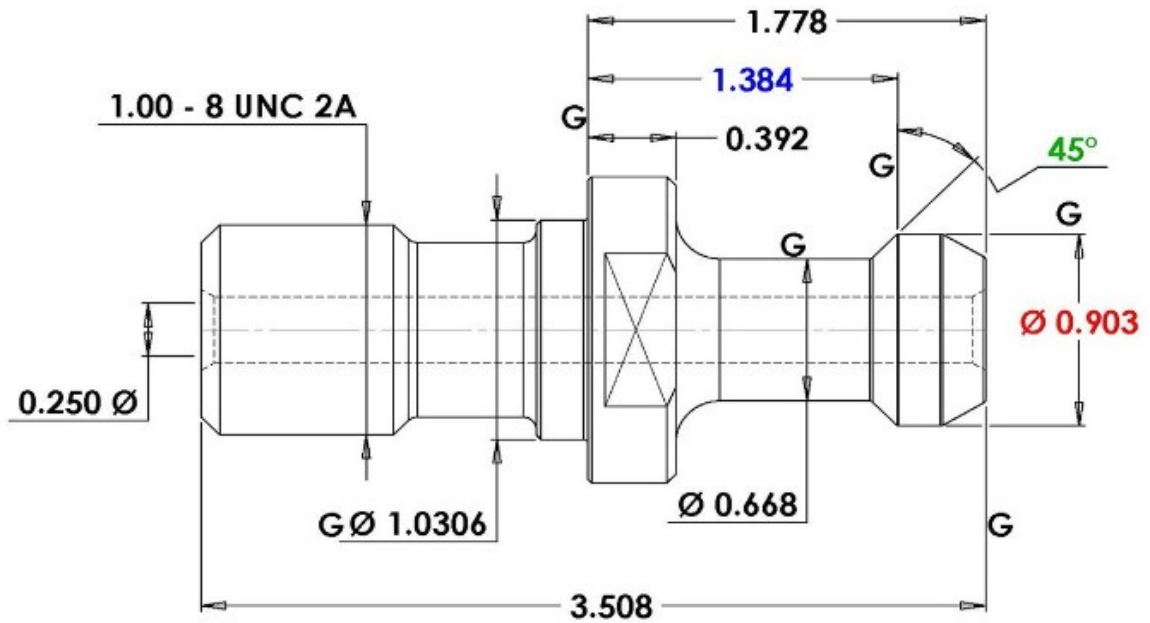
Required air pressure	KG/cm2	6.5
Electrical Power Consumption	KVA	55
	Amps @220V	144
Voltage		220 +/- 10%

#40



Lyndex PN
Non CTS
C40-4500
CTS
C40-4500H

#50
P50T-1



Trucking dimensions	
SM1050	146" x 91 x 101 @ 12,538
Accessories	156" x 46 x 79 @ 983
SM1100	146" x 91 x 101 @ 17,518
Accessories	156 x 46 x 79 @ 3,097
SM1370	: 142" x 92 x 101 @ 18,801
Accessories	177 x 46 x 79 @ 4,583
SM1570	146 x 91 x 101 @ 19,731
Accessories	191 x 91 x 79 @ 3,536
Accessories	157 x 91 x 79 @ 2,465
SM1682	
SW216	445" x 164 x 158 @ 59,305
SW316	445" x 164 x 158 @ 66,668
HSA316	445" x 164 x 158 @ 64,199