

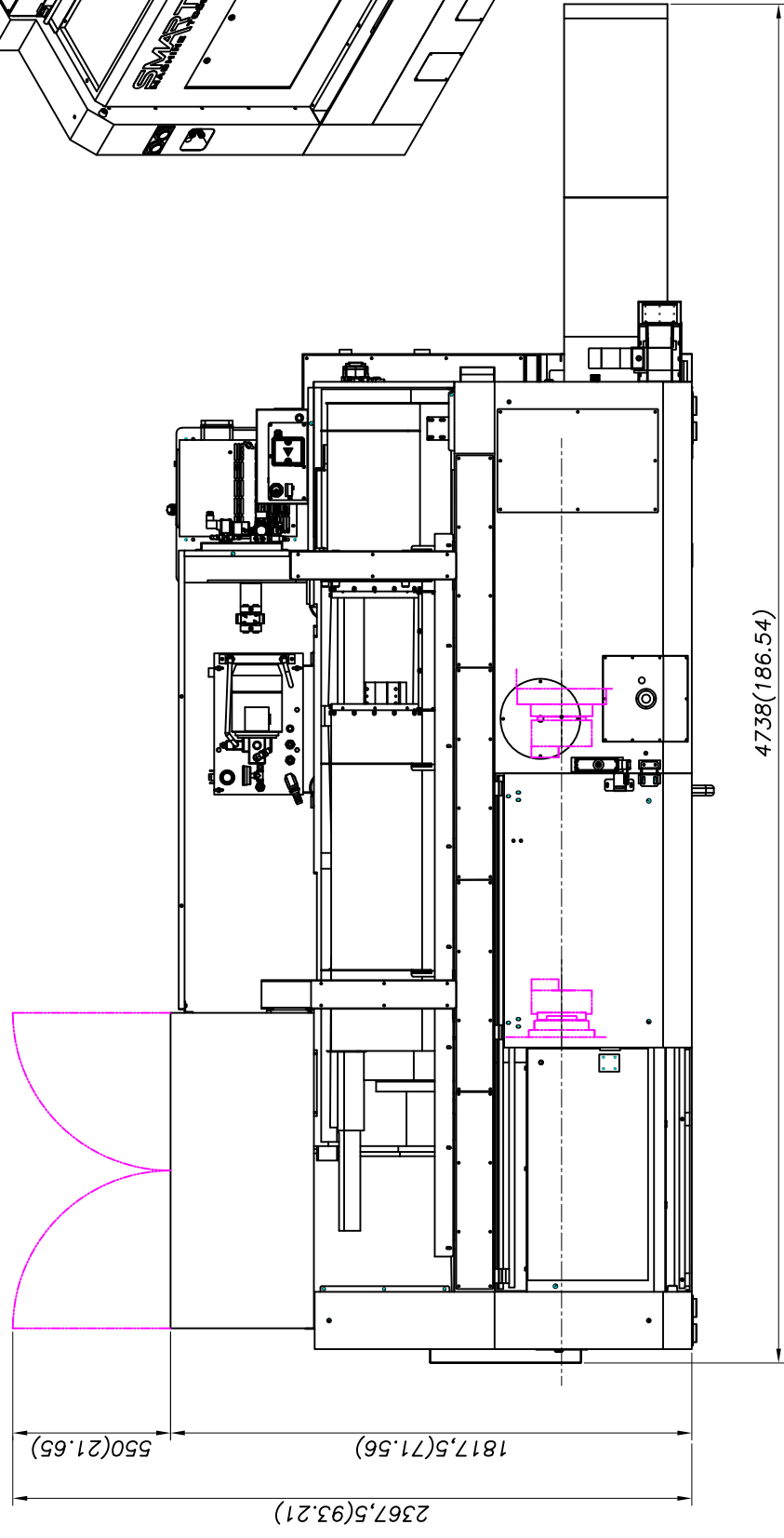
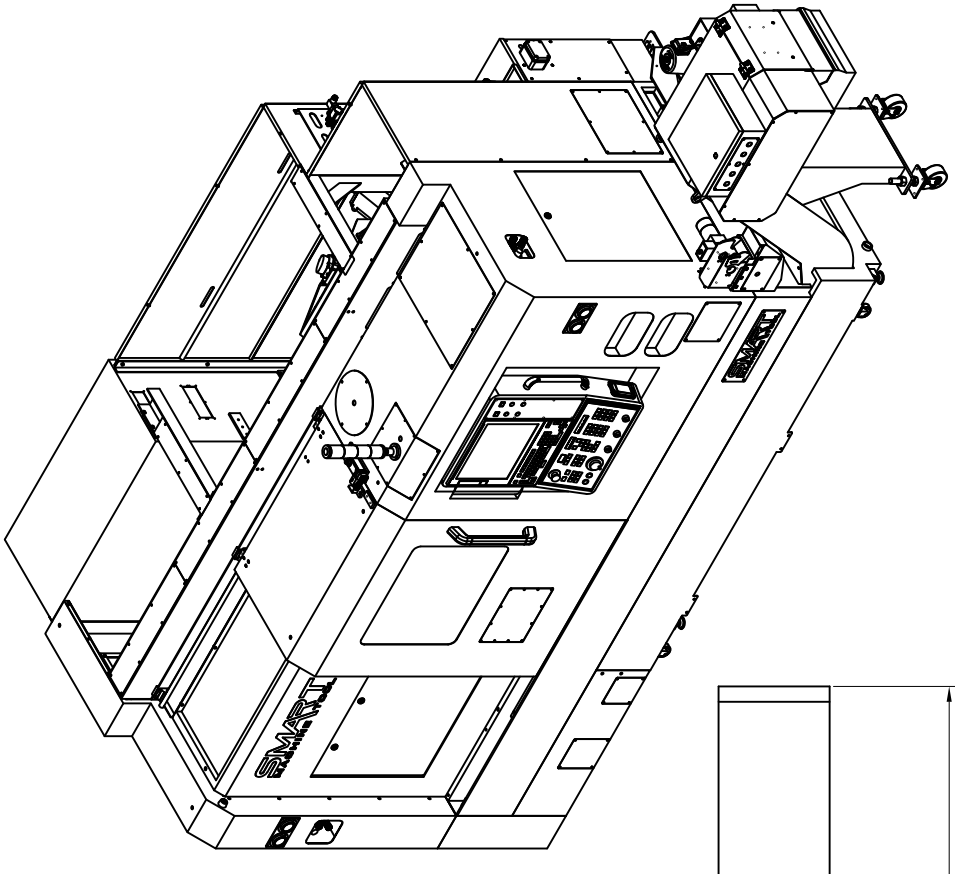
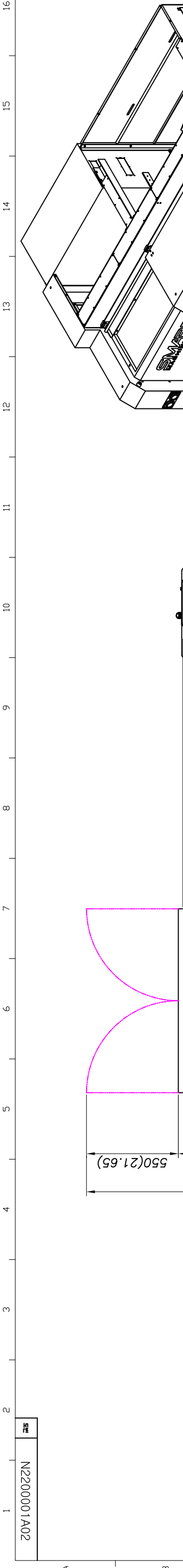


NL 2000

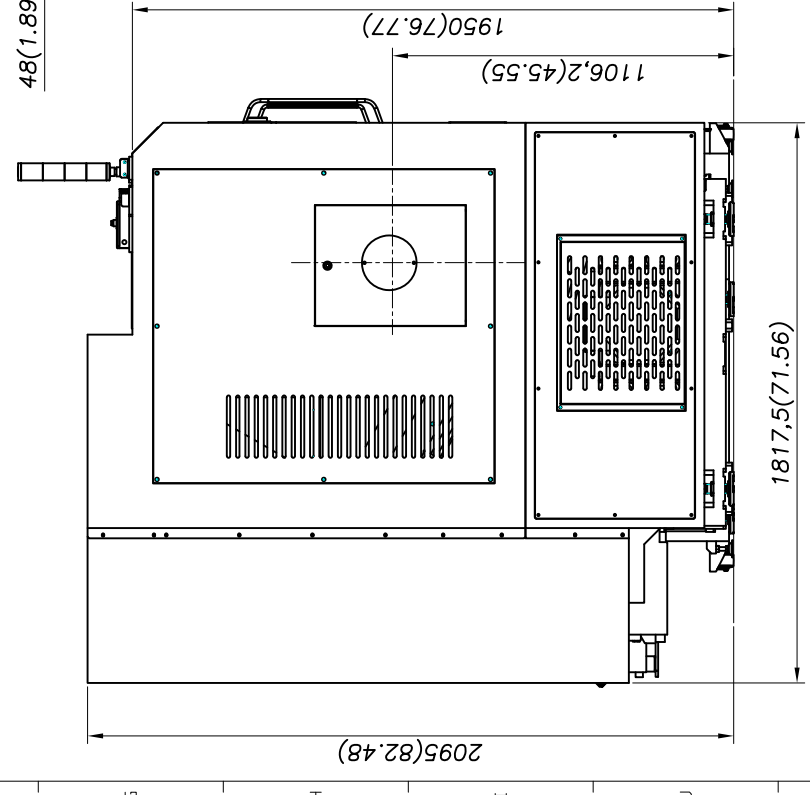
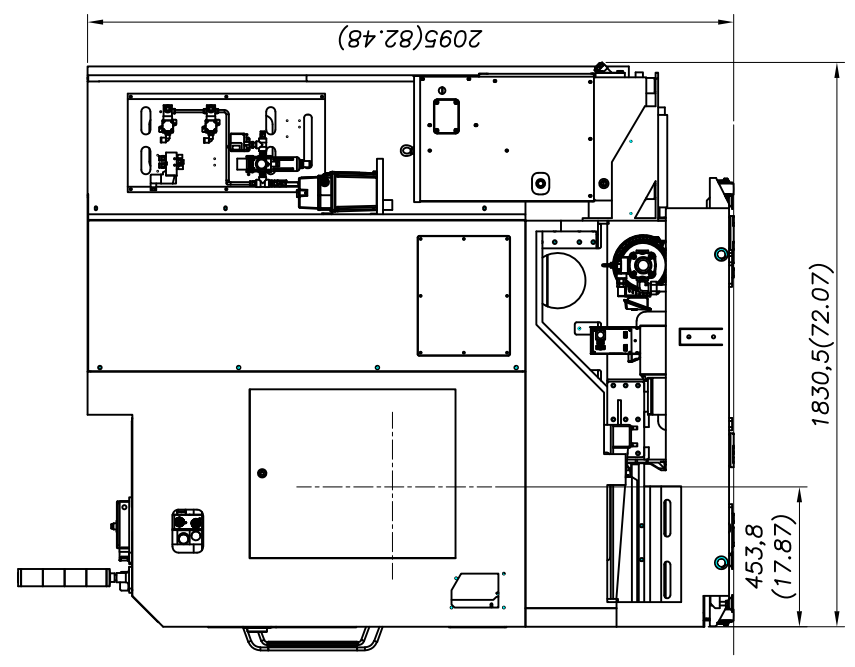
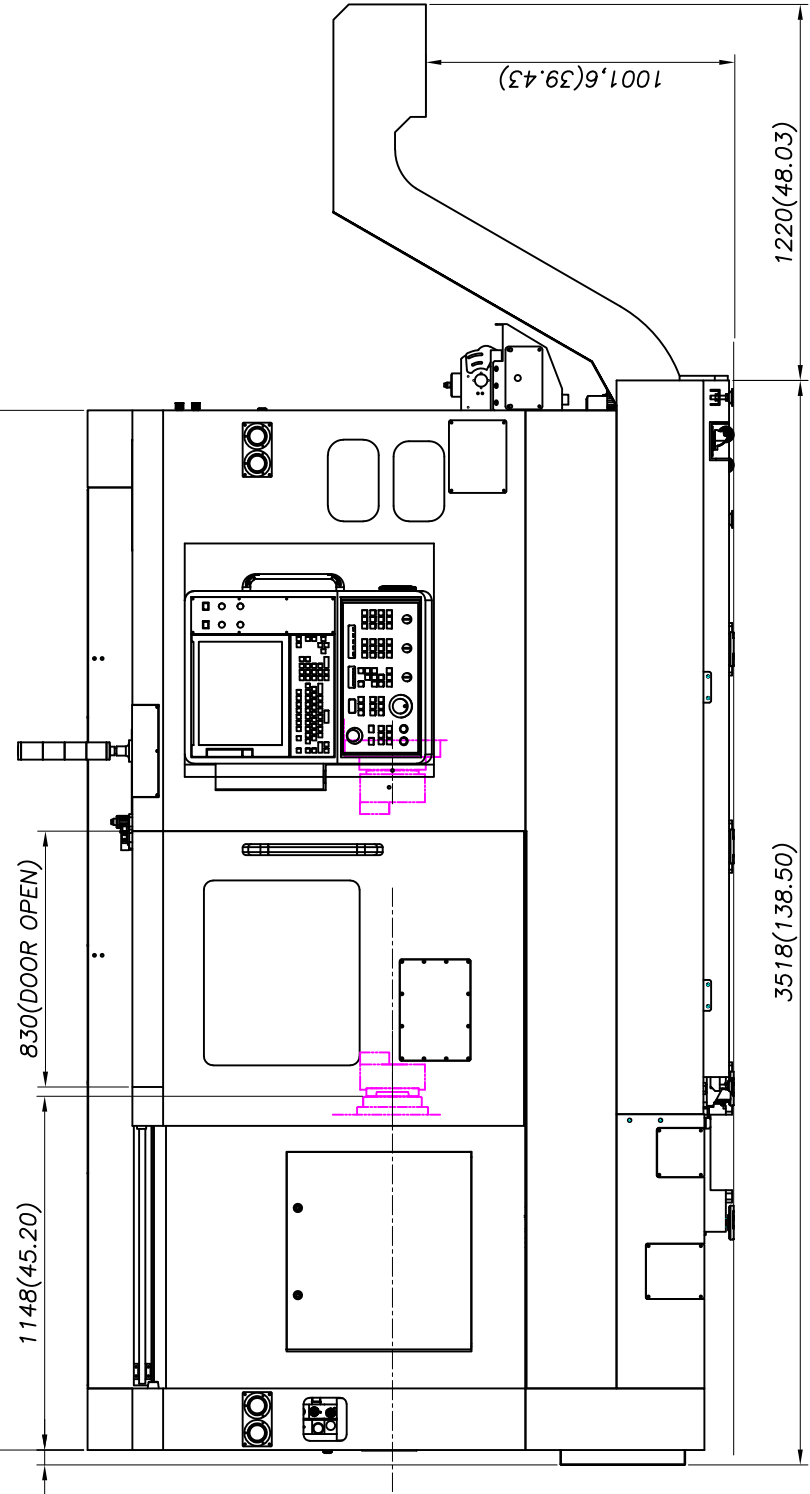
ASY

Installation

Packet



4738(186.54)

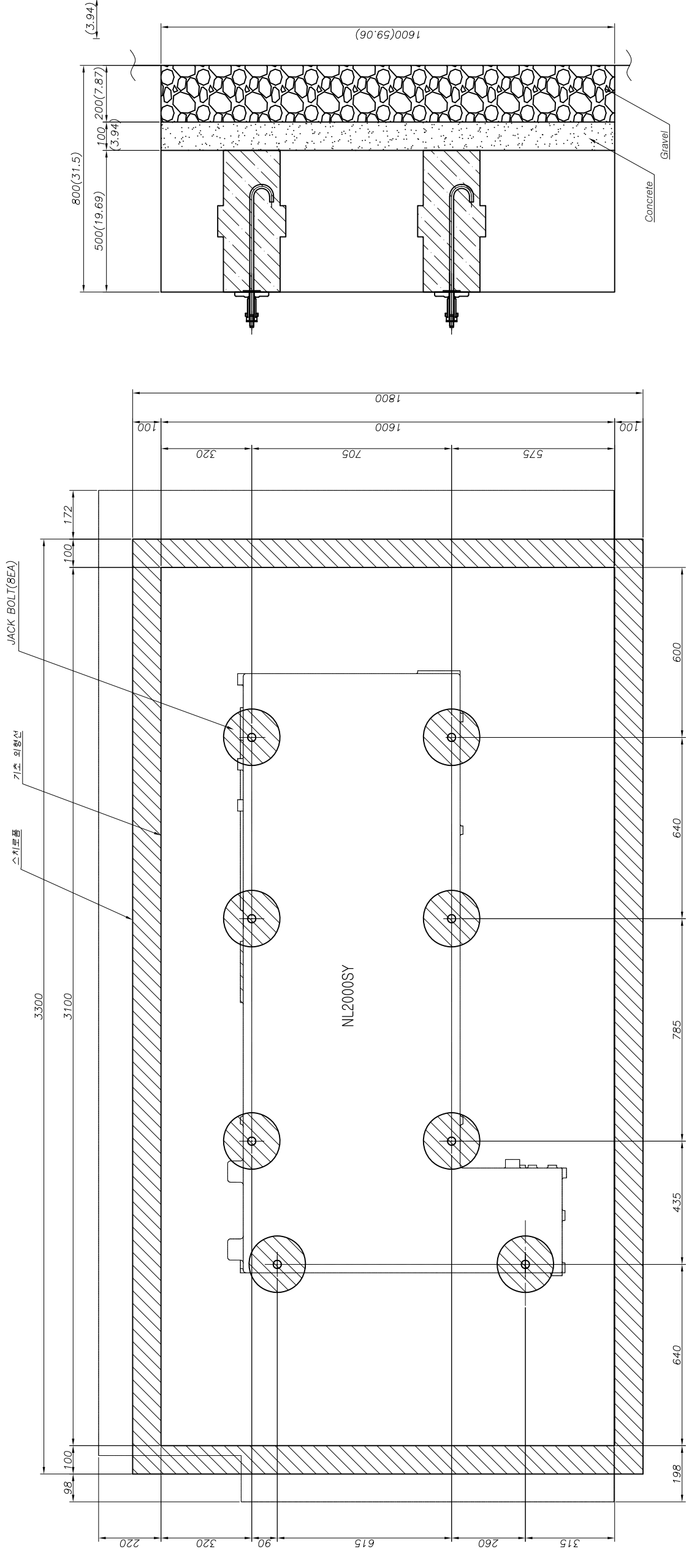


APP'D	GENERAL TOLERANCE	HEAT TREATMENT	SMTK		
REV'D	CHAMFERING	6 ± 0.1	UNIT ASSY	LAY-OUT	
	0.5-30 ± 0.2	30-120 ± 0.2	NL2000SY		
	120-315 ± 0.2	315-500 ± 0.3	NAME	GENERAL ASSY(15 inch)	
CHE'D	500-2000 ± 1.2	UNSPECIFIED MATERIAL	QTY	1/PL	
DES'D	CO. S. & OWNER	CHECKED	SCALE	1/1	
DATE	REVISION	DATE	REV'D	CHE'N	
			MARK		

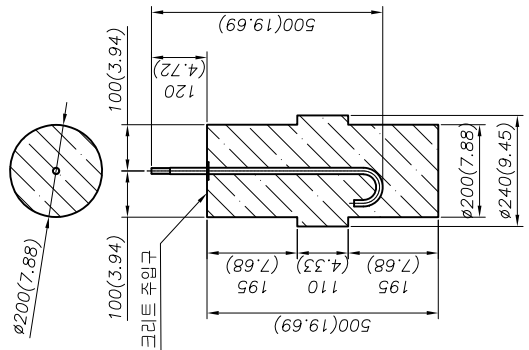
M/C	NL2000SY							
X/D								
D/E								
D/E								
D/E								

00V500002ZN

REV



기계전면(작업자측)



기초 BOLT상세도

- 주 기
- 본 도면은 대체로 표준을 나타내고 있으므로, 설치장소의 지반에 따라 Concrete의 두께를 가감하여 주십시오.
 - 발포 스티로폼은 폭100mm를 사용하십시오.
 - Concrete가 반 건조상태에서 기계 외측에 닿는 부분을 100mm 정도 파서 2차 Concrete 주입구를 만듭니다.
 - 하면(下面) Concrete는 σ_{28} (주입후 28일째 강도) = 210kgf/cm² 정도의 것을 사용하여 주십시오.
 - 기초 외형도보다 외측에 발포 스티로폼을 설치 하기 위해 100mm 홈을 파 주십시오.
 - 단위는 mm(inch)임.

APP'D	GENERAL TOLERANCE	HEAT TREATMENT	SMTK
REV'D	CHAMFIND		UNIT ASSY
CHE'D	6 ± 0.1		NL2000SY
DES'D	0.5 - 30 ± 0.2		NAME
	30 - 120 ± 0.2		FOUNDATION ASSY
	120 - 315 ± 0.3		Q'TY
	315 - 1000 ± 0.5		1/대
	1000 - 2000 ± 1.2		SCALE
	UNSPECIFIED		1/8
	UNSPECIFIED		
	CHAMF. & UNDR		
	CO. 3, RS. 9		

MARK

REVISION

DATE

REV'D

CHE'D

DES'D

NL2000SY

FOUNDATION ASSY

SCALE

1/8

1/대

UNIT ASSY

NL2000SY

LAY-OUT

SMTK

FOUNDATION ASSY

N 2 2 0 0 0 5 A 1 0

1/8

15

16

SMTK-A1

Packing Information (Update date: 2024-02-23)

NO.	Model	Model (Short)	Description	PART NAME	CBM	NET WEIGHT (KGS)	PACKING WEIGHT (KGS)	GROSS WEIGHT (KGS)
1	NL1500/2000/2000B (USA only)	NL1500/2000/2000B	Machine	3,600(L) X 2,300(W) X 2,250(H)	18.63	3,900	530	4,430
2	NL1500M/2000M/2000BM (USA only)	NL1500M/2000M/2000BM	Machine	3,600(L) X 2,300(W) X 2,250(H)	18.63	4,200	530	4,730
3	NL2000ASY	NL2000ASY	Machine + Chip conveyor	5,300(L) X 2,300(W) X 2,475(H)	30.17	5,700	700	6,400
4	NL2000BSY	NL2000BSY	Machine + Chip conveyor	5,300(L) X 2,300(W) X 2,475(H)	30.17	5,800	700	6,500
5	NL2500SY	NL2500SY	Machine + Chip conveyor	5,300(L) X 2,300(W) X 2,475(H)	30.17	6,100	700	6,800
6	NL2500/750	NL2500	Machine + Chip conveyor	5,100(L) X 2,300(W) X 2,250(H)	26.39	5,700	660	6,360
7	NL2500M/750	NL2500M	Machine + Chip conveyor	5,100(L) X 2,300(W) X 2,250(H)	26.39	5,900	660	6,560
8	NL2500/1100	NL2500L	Machine + Chip conveyor	5,550(L) X 2,300(W) X 2,250(H)	28.72	6,900	720	7,620
9	NL2500M/1100	NL2500LM	Machine + Chip conveyor	5,550(L) X 2,300(W) X 2,250(H)	28.72	7,100	720	7,820
10	NL3000B/750	NL3000B	Machine + Chip conveyor	5,100(L) X 2,300(W) X 2,250(H)	26.39	5,700	660	6,360
11	NL3000BM/750	NL3000BM	Machine + Chip conveyor	5,100(L) X 2,300(W) X 2,250(H)	26.39	5,900	660	6,560
12	NL3000B/1100	NL3000BL	Machine + Chip conveyor	5,550(L) X 2,300(W) X 2,250(H)	28.72	6,900	720	7,620
13	NL3000BM/1100	NL3000BLM	Machine + Chip conveyor	5,550(L) X 2,300(W) X 2,250(H)	28.72	7,100	720	7,820
14	NL4000M/1200	NL4000M	Machine	4,800(L) X 2,300(W) X 2,450(H)	27.05	10,800	650	11,450
15	NL4000/1200 C/C	NL4000 C/C	Chip conveyor	4,250(L) X 950(W) X 1,500(H)	6.06	800	70	870
16	NL4000M/2200	NL4000LM	Machine	6,000(L) X 2,300(W) X 2,450(H)	33.81	13,700	750	14,450
17	NL4000(M)/2200 C/C	NL4000L/LM C/C	Chip conveyor	5,450(L) X 950(W) X 1,600(H)	8.21	1,000	100	1,100
18	NL4000Y/2200	NL4000LY	Machine	6,000(L) X 2,300(W) X 2,950(H)	40.71	15,000	650	15,650
19	NL4000Y/2200 C/C	NL4000LY C/C	Chip conveyor	5,450(L) X 950(W) X 1,880(H)	9.73	1,000	100	1,100
20	NL4000(M)/3200	NL4000XL/XLM	Machine	7,000(L) X 2,300(W) X 2,550(H)	41.06	16,800	1,500	18,300
21	NL4000(M)/3200 C/C	NL4000XL/XLM C/C	Chip conveyor	6,450(L) X 1,150(W) X 1,600(H)	11.87	1,200	100	1,300
22	NL5000/1200	NL5000	Machine	4,800(L) X 2,300(W) X 2,450(H)	27.05	10,800	650	11,450
23	NL5000M/1200	NL5000M	Machine	4,800(L) X 2,300(W) X 2,450(H)	27.05	10,900	650	11,550
24	NL5000(M)/1200 C/C	NL5000/M C/C	Chip conveyor	4,250(L) X 950(W) X 1,500(H)	6.06	800	70	870
25	NL5000/2200	NL5000L	Machine	6,000(L) X 2,300(W) X 2,450(H)	33.81	13,700	750	14,450
26	NL5000M/2200	NL5000LM	Machine	6,000(L) X 2,300(W) X 2,450(H)	33.81	13,800	750	14,550
27	NL5000(M)/2200 C/C	NL5000L/LM C/C	Chip conveyor	5,450(L) X 950(W) X 1,600(H)	8.21	1,000	100	1,100
28	NL5000(M)/3200	NL5000XL/XLM	Machine	7,000(L) X 2,300(W) X 2,550(H)	41.06	16,900	1,500	18,400
29	NL5000(M)/3200 C/C	NL5000XL/XLM C/C	Chip conveyor	6,450(L) X 1,150(W) X 1,600(H)	11.87	1,200	100	1,300
30	NL6000/750(M) C/C	NL6000S/SM C/C	Chip conveyor + Rear cover	3,950(L) X 2,300(W) X 1,750(H)	15.90	1,800	130	1,930
31	NL6000(M)/1500 C/C	NL6000/M C/C	Chip conveyor + Rear cover	4,850(L) X 2,300(W) X 1,600(H)	17.85	2,150	150	2,300
32	NL6000(M)/2200 C/C	NL6000L/LM C/C	Chip conveyor + Rear cover	5,550(L) X 2,300(W) X 1,750(H)	22.34	2,250	250	2,500
33	NL6000(M)/3200 C/T	NL6000XL/XLM C/T	Coolant tank + Rear cover	5,600(L) X 2,300(W) X 950(H)	12.24	2,650	350	3,000
34	NV5500L C/C	NV5500L C/C	Chip conveyor	4,880(L) X 1,150(W) X 750(H)	4.21	900	100	1,000

MACHINE MODEL	KVA	AMPS @ 220V	Coolant	Slideways	Hyd. Unit	Transmission	Chuck	Oil for Air
NL150/200/250	31	82	48	.79 gal	5.3 gal	n/a	.2 oz daily	N/A
NL1500(M)	31	82	48	.79 gal	5.3 gal	n/a	.2 oz daily	.6 oz
NL2000(M)	31	82	48	.79 gal	5.3 gal	n/a	.2 oz daily	.6 oz
NL2000A/B/S/Y	40	105	60	.79 gal	5.3 gal	n/a	.2 oz daily	.6 oz
NL2500SY	50	131	60	.79 gal	5.3 gal	n/a	.2 oz daily	.6 oz
NL2500S	40	105	48	.79 gal	5.3 gal	0.75	.2 oz daily	.6 oz
NL2500(M)	40	105	53	.79 gal	5.3 gal	0.75	.2 oz daily	.6 oz
NL3000(M)	40	105	63	.79 gal	5.3 gal	0.75	.2 oz daily	N/A
NL4000(M)	55	144	63	.79 gal	6.4 gal	0.75	.2 oz daily	N/A
NL5000(M)	55	144	63	.79 gal	6.4 gal	0.75	.2 oz daily	N/A
NL5000L(M)	65	170	130	.79 gal	6.4 gal	0.75	.2 oz daily	N/A
NL6000(M)	65	170	105	.79 gal	15 gal	0.75	.2 oz daily	N/A
NL6000L(M)	65	170	150	.79 gal	15 gal	0.75	.2 oz daily	N/A
NL6000XL(M)	65	170	180	.79 gal	15 gal	0.75	.2 oz daily	N/A
NL7000L(M)	65	170	150	.79 gal	15 gal	2 gal	.2 oz daily	N/A
NL7000XL(M)	65	170	180	.79 gal	15 gal	2 gal	.2 oz daily	N/A
				Shell Oil T68	Mobil DTE 24	Mobil Oil Light	SW10	DTE Light
				Mobil Vactra#2		ISO VG 32		
				check daily	check daily	check daily	grease daily	check daily

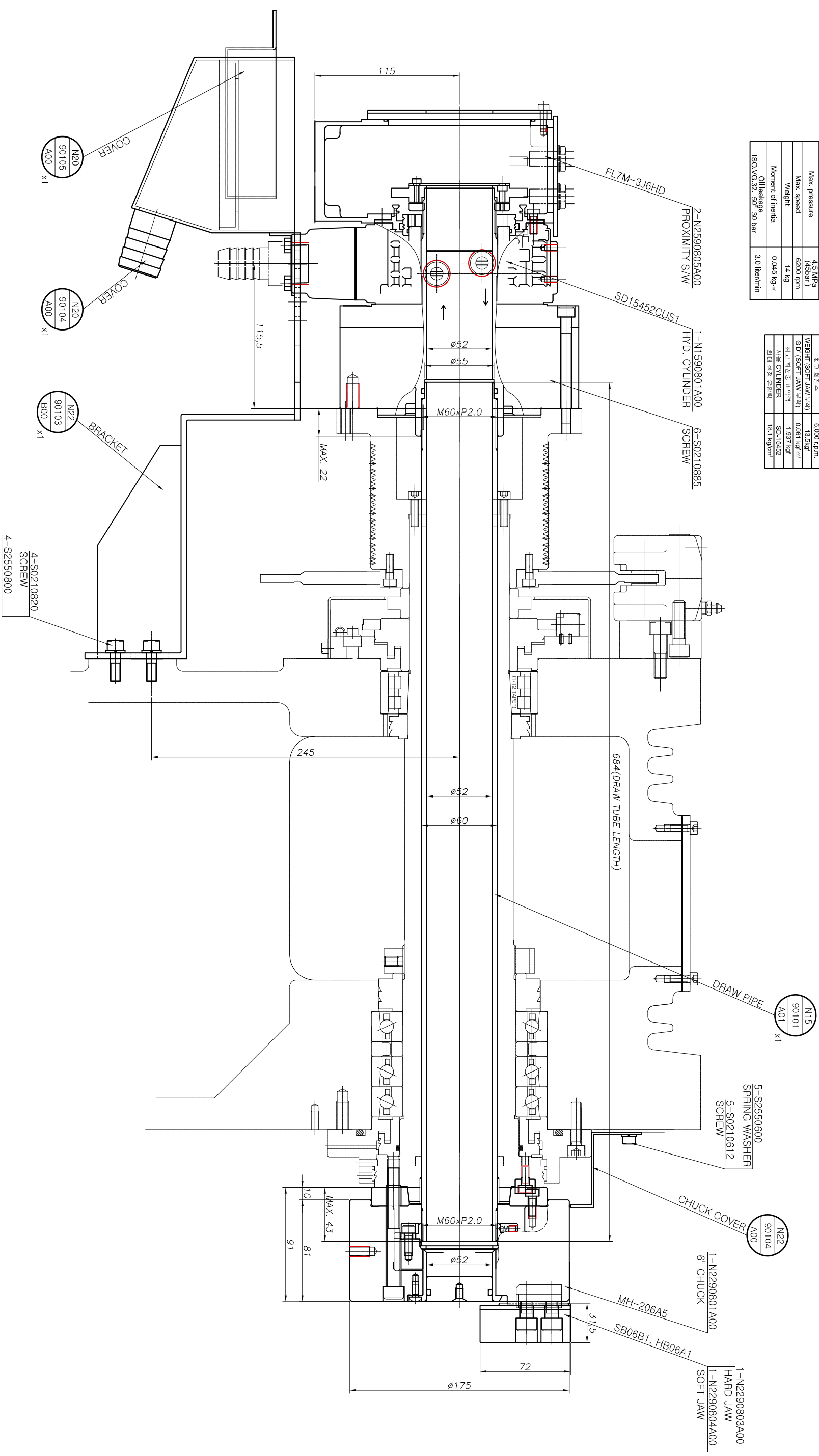
Air requirements: 80-100 psi, 5-10 CFM

Coolant only fluid required at install

Voltage : 220V +/- 10%

SPECIFICATION	
CYLINDER INSIDE DIAMETER	156
PISTON STROKE	25 mm
PISTON THRUST (PUSH)	67 kN (6800 kg)
Pressure 4.5MPa (45bar)	(47 cm)
Max. pressure	4.5 MPa (45bar)
Max. speed	6200 rpm
Weight	14 kg
Moment of inertia	0.045 kg·m ²
ISO V.S.32	30 bar
ISO V.S.32	3.0 liter/min

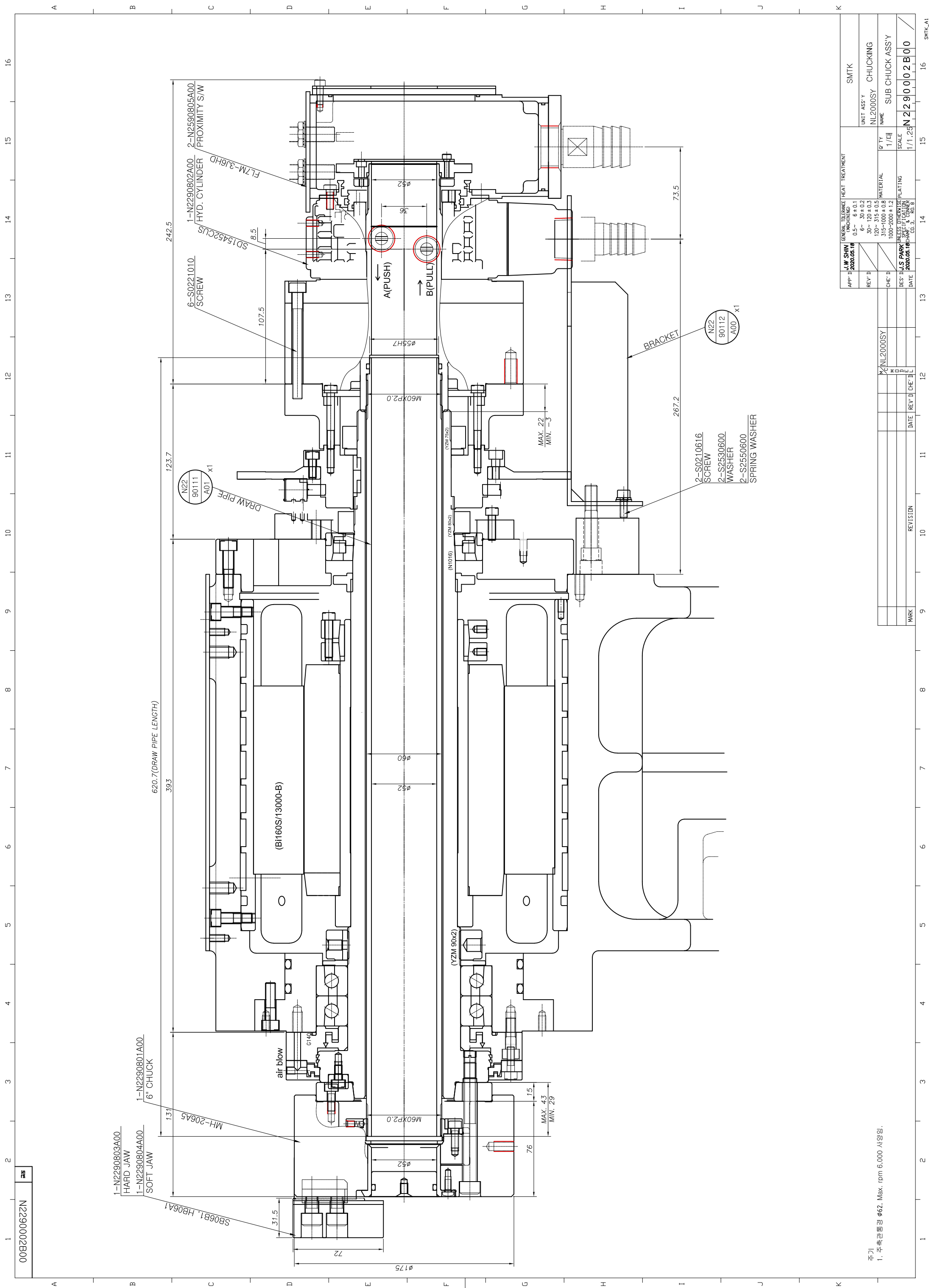
SPECIFICATION	
PLUNGER STROKE	14 mm
JAW STROKE (전위)	6.4 mm
PLUNGER 작동속력	2.551kgf (24.7kN)
전위 작동속력	5.812kgf (57kN)
최고 회전속	6,000 rpm
WEIGHT (SOFT JAW 포함)	13.5kgf
GD (SOFT JAW 포함)	0.061 kgf·m ²
최고 회전속 (포인팅)	1,937 kgf
시공 CYLINDER	SC-1545Z
회전 방향	18:1 Right



MARK	REVISION	DATE	REV'D	CHE' D	DATE	REV'D	CHE' D	DATE	REV'D	CHE' D	DATE	REV'D	CHE' D	DATE	REV'D	CHE' D	DATE	REV'D	CHE' D	DATE	

APP'D	DES' D	DATE	REV'D	CHE' D	DATE	REV'D	CHE' D	DATE	REV'D	CHE' D	DATE	REV'D	CHE' D	DATE	REV'D	CHE' D	DATE	REV'D	CHE' D	DATE	

GENERAL TOLERANCE	HEAT TREATMENT	SMTK
0.3~ 6 ± 0.1		
6~ 30 ± 0.2		
30~ 120 ± 0.3		
120~ 315 ± 0.5		
315~ 1000 ± 0.8		
1000~ 2000 ± 1.2		
2000~ 5000 ± 1.5		
5000~ 10000 ± 2.0		
10000~ 20000 ± 2.5		
20000~ 50000 ± 3.0		
50000~ 100000 ± 4.0		
100000~ 200000 ± 5.0		
200000~ 500000 ± 6.0		
500000~ 1000000 ± 7.0		
1000000~ 2000000 ± 8.0		
2000000~ 5000000 ± 9.0		
5000000~ 10000000 ± 10.0		
10000000~ 20000000 ± 11.0		
20000000~ 50000000 ± 12.0		
50000000~ 100000000 ± 13.0		
100000000~ 200000000 ± 14.0		
200000000~ 500000000 ± 15.0		
500000000~ 1000000000 ± 16.0		
1000000000~ 2000000000 ± 17.0		
2000000000~ 5000000000 ± 18.0		
5000000000~ 10000000000 ± 19.0		
10000000000~ 20000000000 ± 20.0		
20000000000~ 50000000000 ± 21.0		
50000000000~ 100000000000 ± 22.0		
100000000000~ 200000000000 ± 23.0		
200000000000~ 500000000000 ± 24.0		
500000000000~ 1000000000000 ± 25.0		
1000000000000~ 2000000000000 ± 26.0		
2000000000000~ 5000000000000 ± 27.0		
5000000000000~ 10000000000000 ± 28.0		
10000000000000~ 20000000000000 ± 29.0		
20000000000000~ 50000000000000 ± 30.0		
50000000000000~ 100000000000000 ± 31.0		
100000000000000~ 200000000000000 ± 32.0		
200000000000000~ 500000000000000 ± 33.0		
500000000000000~ 1000000000000000 ± 34.0		
1000000000000000~ 2000000000000000 ± 35.0		
2000000000000000~ 5000000000000000 ± 36.0		
5000000000000000~ 10000000000000000 ± 37.0		
10000000000000000~ 20000000000000000 ± 38.0		
20000000000000000~ 50000000000000000 ± 39.0		
50000000000000000~ 100000000000000000 ± 40.0		
100000000000000000~ 200000000000000000 ± 41.0		
200000000000000000~ 500000000000000000 ± 42.0		
500000000000000000~ 1000000000000000000 ± 43.0		
1000000000000000000~ 2000000000000000000 ± 44.0		
2000000000000000000~ 5000000000000000000 ± 45.0		
5000000000000000000~ 10000000000000000000 ± 46.0		
10000000000000000000~ 20000000000000000000 ± 47.0		
20000000000000000000~ 50000000000000000000 ± 48.0		
50000000000000000000~ 100000000000000000000 ± 49.0		
100000000000000000000~ 200000000000000000000 ± 50.0		
200000000000000000000~ 500000000000000000000 ± 51.0		
500000000000000000000~ 1000000000000000000000 ± 52.0		
1000000000000000000000~ 2000000000000000000000 ± 53.0		
2000000000000000000000~ 5000000000000000000000 ± 54.0		
5000000000000000000000~ 10000000000000000000000 ± 55.0		
10000000000000000000000~ 20000000000000000000000 ± 56.0		
20000000000000000000000~ 50000000000000000000000 ± 57.0		
50000000000000000000000~ 100000000000000000000000 ± 58.0		
100000000000000000000000~ 200000000000000000000000 ± 59.0		
200000000000000000000000~ 500000000000000000000000 ± 60.0		
500000000000000000000000~ 1000000000000000000000000 ± 61.0		
1000000000000000000000000~ 2000000000000000000000000 ± 62.0		
2000000000000000000000000~ 5000000000000000000000000 ± 63.0		
5000000000000000000000000~ 10000000000000000000000000 ± 64.0		
10000000000000000000000000~ 20000000000000000000000000 ± 65.0		
20000000000000000000000000~ 50000000000000000000000000 ± 66.0		
50000000000000000000000000~ 100000000000000000000000000 ± 67.0		
100000000000000000000000000~ 200000000000000000000000000 ± 68.0		
200000000000000000000000000~ 500000000000000000000000000 ± 69.0		
500000000000000000000000000~ 1000000000000000000000000000 ± 70.0		
1000000000000000000000000000~ 2000000000000000000000000000 ± 71.0		
2000000000000000000000000000~ 5000000000000000000000000000 ± 72.0		
5000000000000000000000000000~ 10000000000000000000000000000 ± 73.0		
10000000000000000000000000000~ 20000000000000000000000000000 ± 74.0		
20000000000000000000000000000~ 50000000000000000000000000000 ± 75.0		
50000000000000000000000000000~ 100000000000000000000000000000 ± 76.0		
100000000000000000000000000000~ 200000000000000000000000000000 ± 77.0		
200000000000000000000000000000~ 500000000000000000000000000000 ± 78.0		
500000000000000000000000000000~ 1000000000000000000000000000000 ± 79.0		
1000000000000000000000000000000~ 2000000000000000000000000000000 ± 80.0		
2000000000000000000000000000000~ 5000000000000000000000000000000 ± 81.0		
5000000000000000000000000000000~ 10000000000000000000000000000000 ± 82.0		
10000000000000000000000000000000~ 20000000000000000000000000000000 ± 83.0		
20000000000000000000000000000000~ 50000000000000000000000000000000 ± 84.0		
50000000000000000000000000000000~ 100000000000000000000000000000000 ± 85.0		
100000000000000000000000000000000~ 200000000000000000000000000000000 ± 86.0		
200000000000000000000000000000000~ 500000000000000000000000000000000 ± 87.0		
500000000000000000000000000000000~ 1000000000000000000000000000000000 ± 88.0		
1000000000000000000000000000000000~ 2000000000000000000000000000000000 ± 89.0		
2000000000000000000000000000000000~ 5000000000000000000000000000000000 ± 90.0		
5000000000000000000000000000000000~ 10000000000000000000000000000000000 ± 91.0		
10000000000000000000000000000000000~ 20000000000000000000000000000000000 ± 92.0		
20000000000000000000000000000000000~ 50000000000000000000000000000000000 ± 93.0		
50000000000000000000000000000000000~ 100000000000000000000000000000000000 ± 94.0		
100000000000000000000000000000000000~ 200000000000000000000000000000000000 ± 95.0		
200000000000000000000000000000000000~ 500000000000000000000000000000000000 ± 96.0		
500000000000000000000000000000000000~ 1000000000000000000000000000000000000 ± 97.0		
1000000000000000000000000000000000000~ 2000000000000000000000000000000000000 ± 98.0		
2000000000000000000000000000000000000~ 5000000000000000000000000000000000000 ± 99.0		
5000000000000000000000000000000000000~ 10000000000000000000000000000000000000 ± 100.0		



주
1. 주축관통경 ϕ 62. Max. rpm 6,000 사양임.

APP. #	J.W. SHIN	2020.05.18	GENERAL TOLERANCE	HEAT TREATMENT	SMTK
REV. #	REV. #	DATE	0.5 - 6 ± 0.1 6 - 30 ± 0.2 30 - 120 ± 0.3 120 - 310 ± 0.5 315 - 1000 ± 0.8 1000 - 2000 ± 1.2		UNIT ASSY
CHE. #	CHE. #	DATE	MATERIAL		CHUCKING
BES. #	JUS PARK	2020.05.18	1000 - 2000 ± 1.2	SCALE	NL2000SY
MARK	NAME	DATE	UNIT ASSY SPECIFICATION CO. S., REV. 8	UNIT ASSY NAME	SUB CHUCK ASSY
				SCALE	N 22 90 00 2 B 00
				SCALE	1/1.25