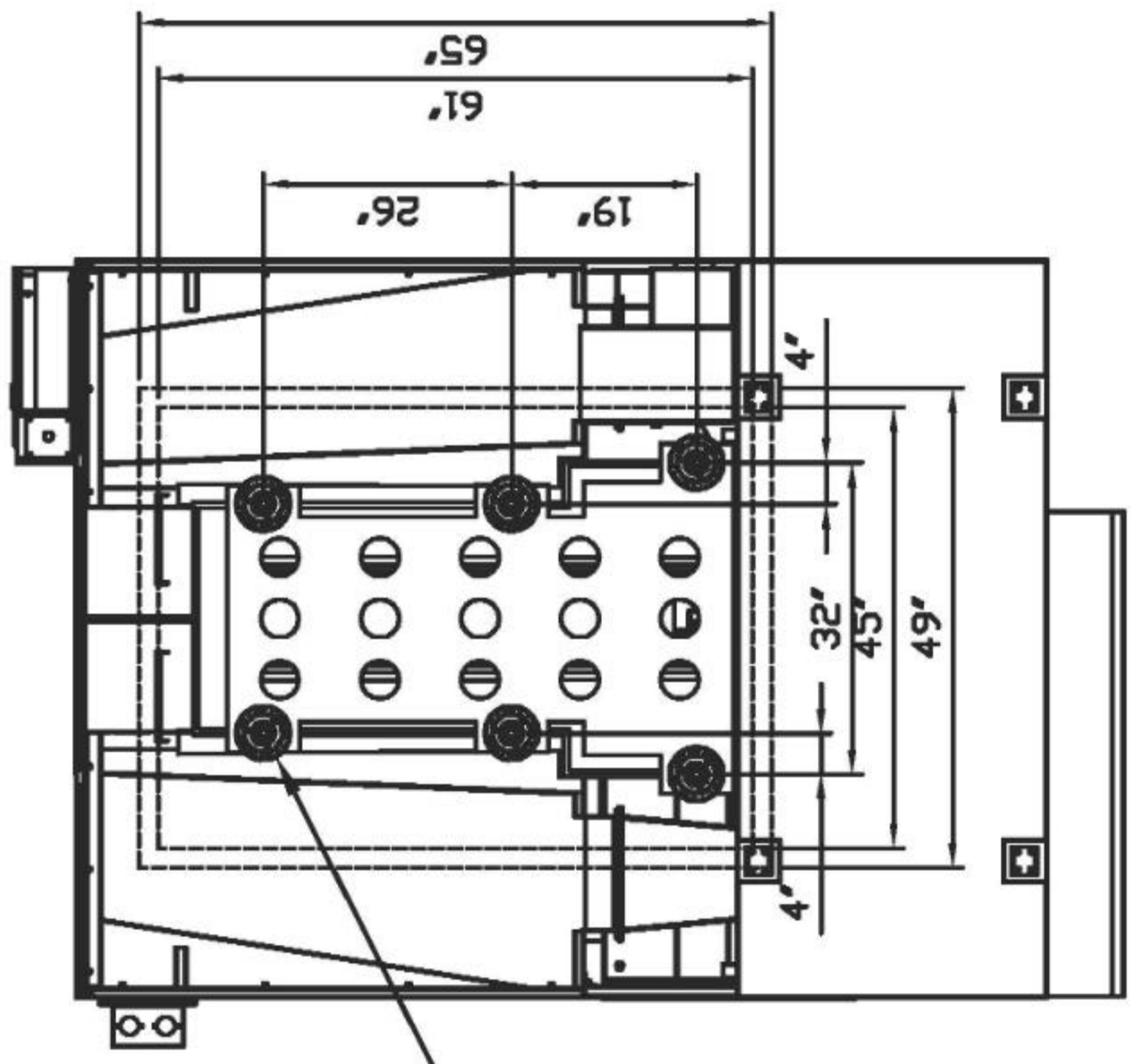


SMART
MACHINE TOOL

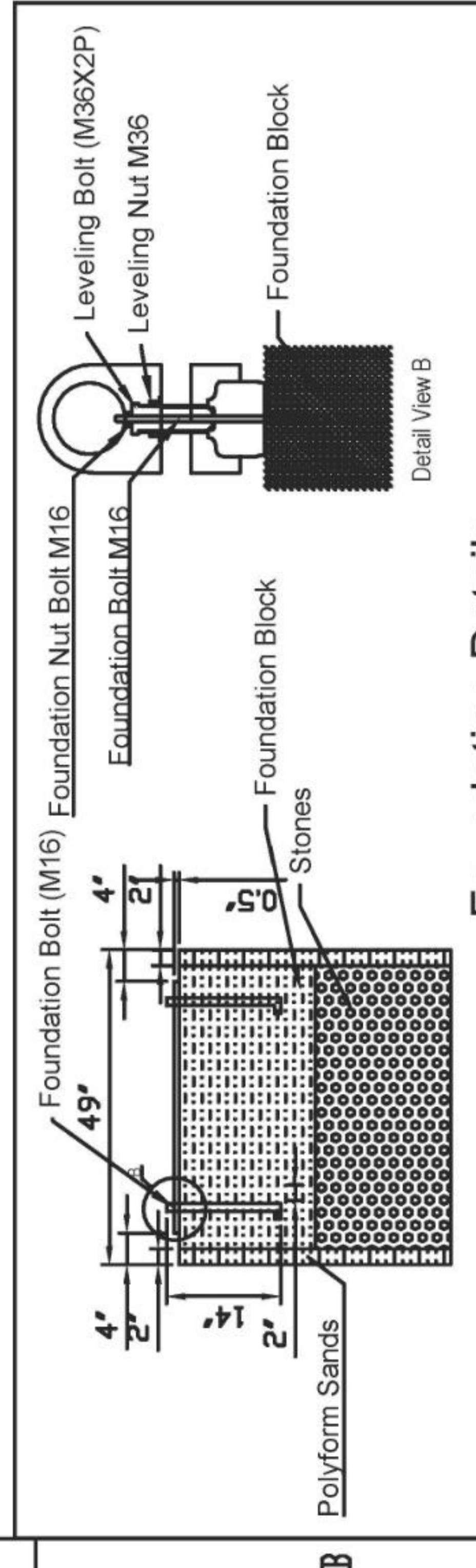
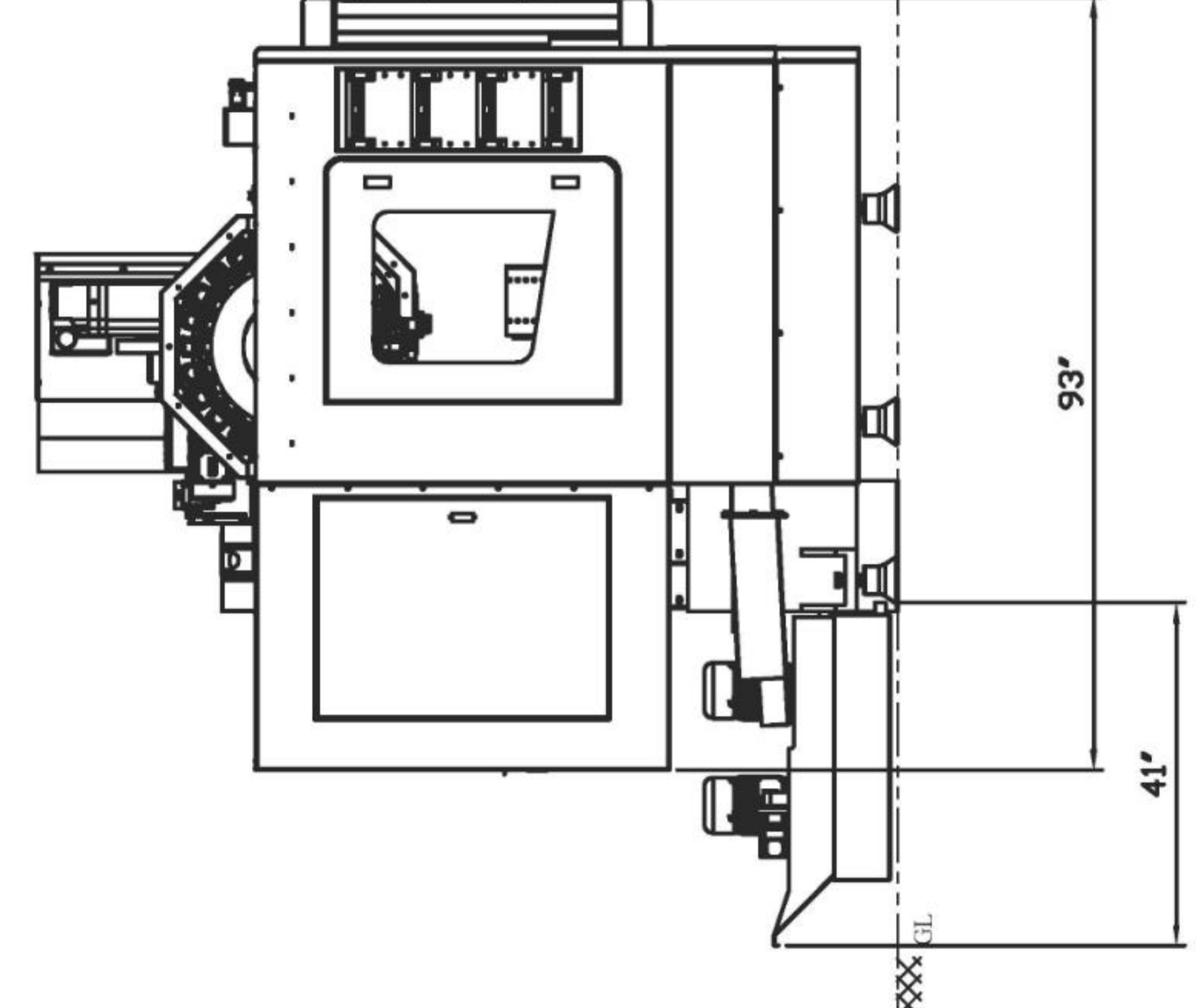
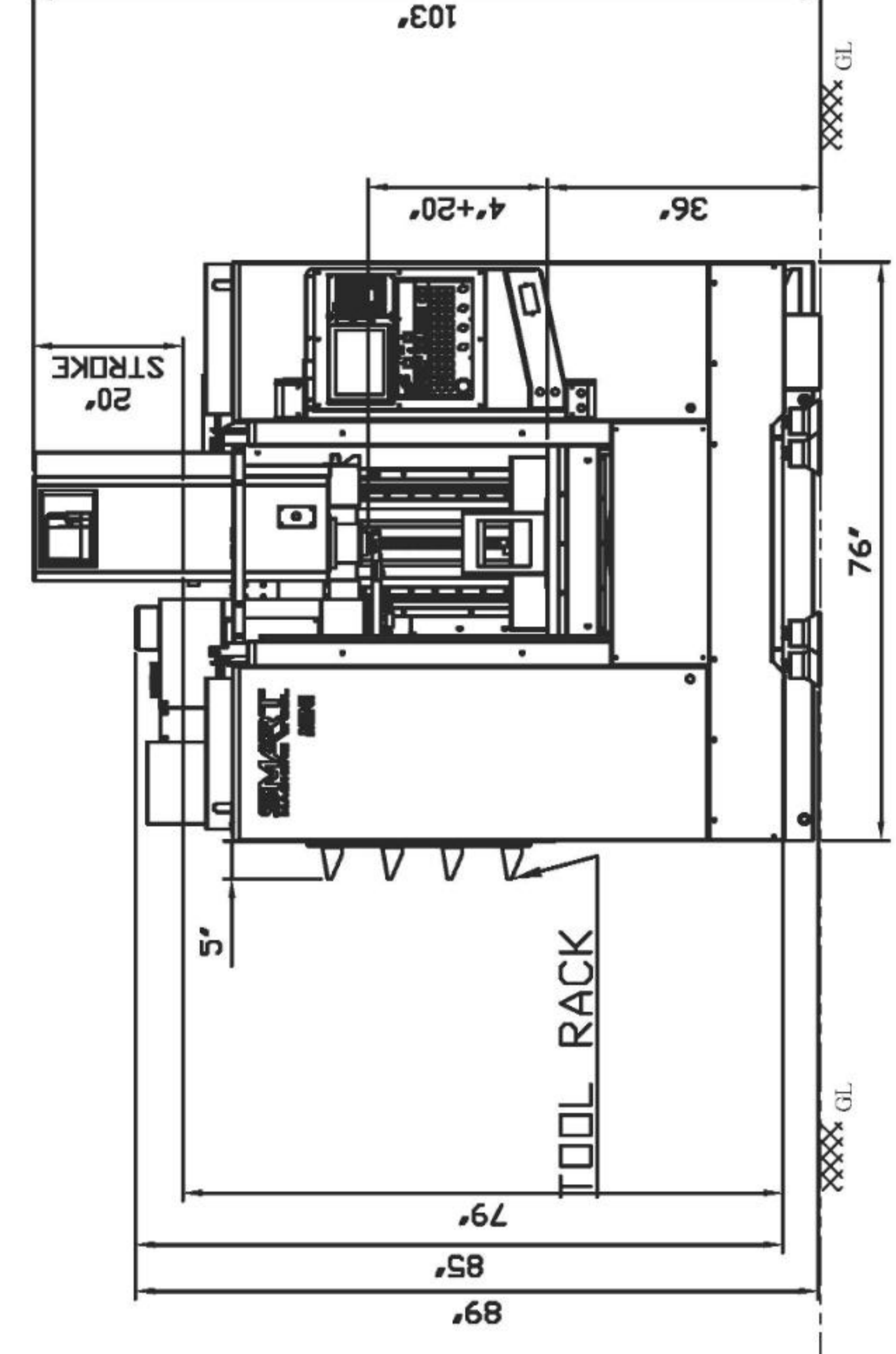
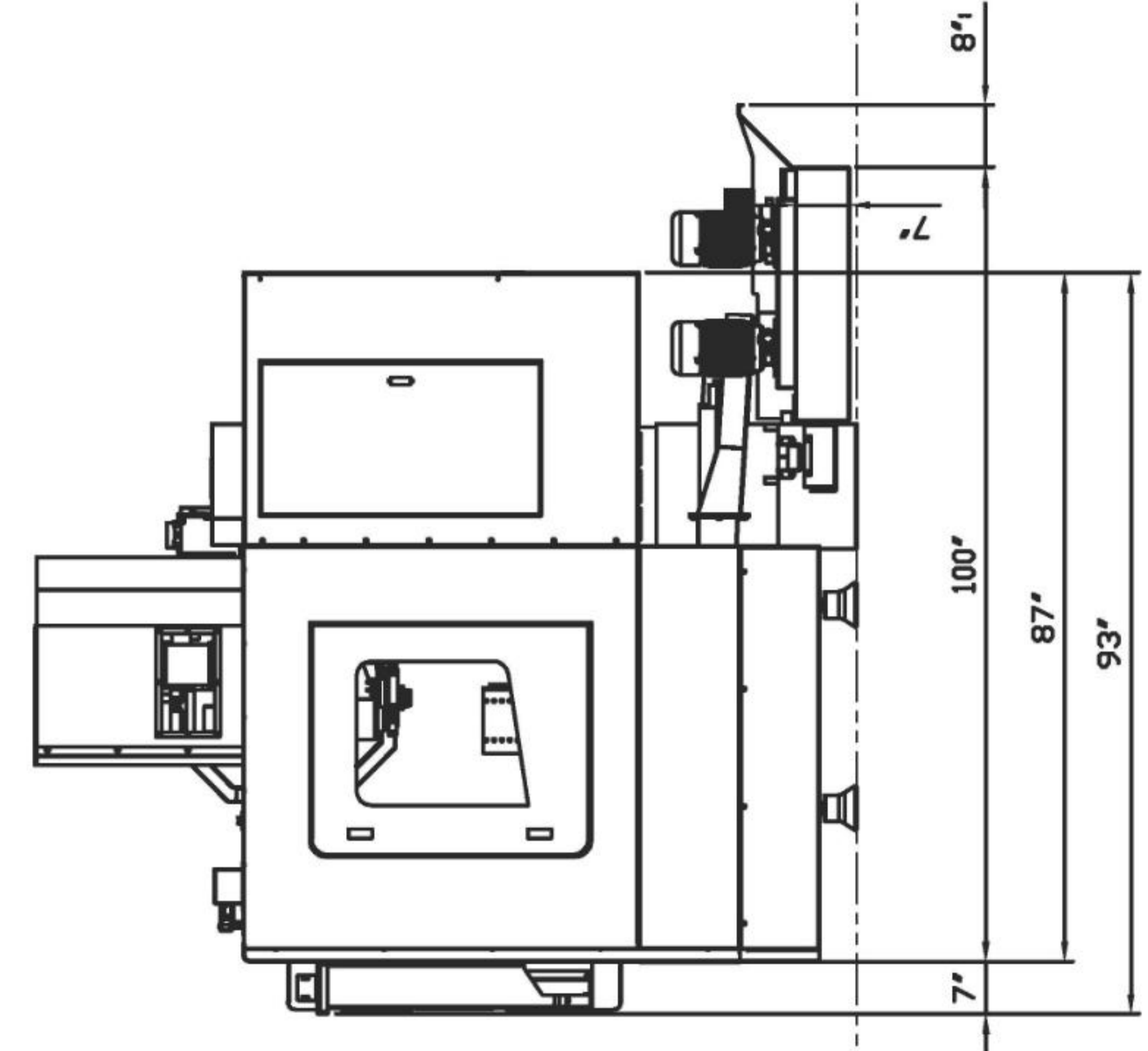
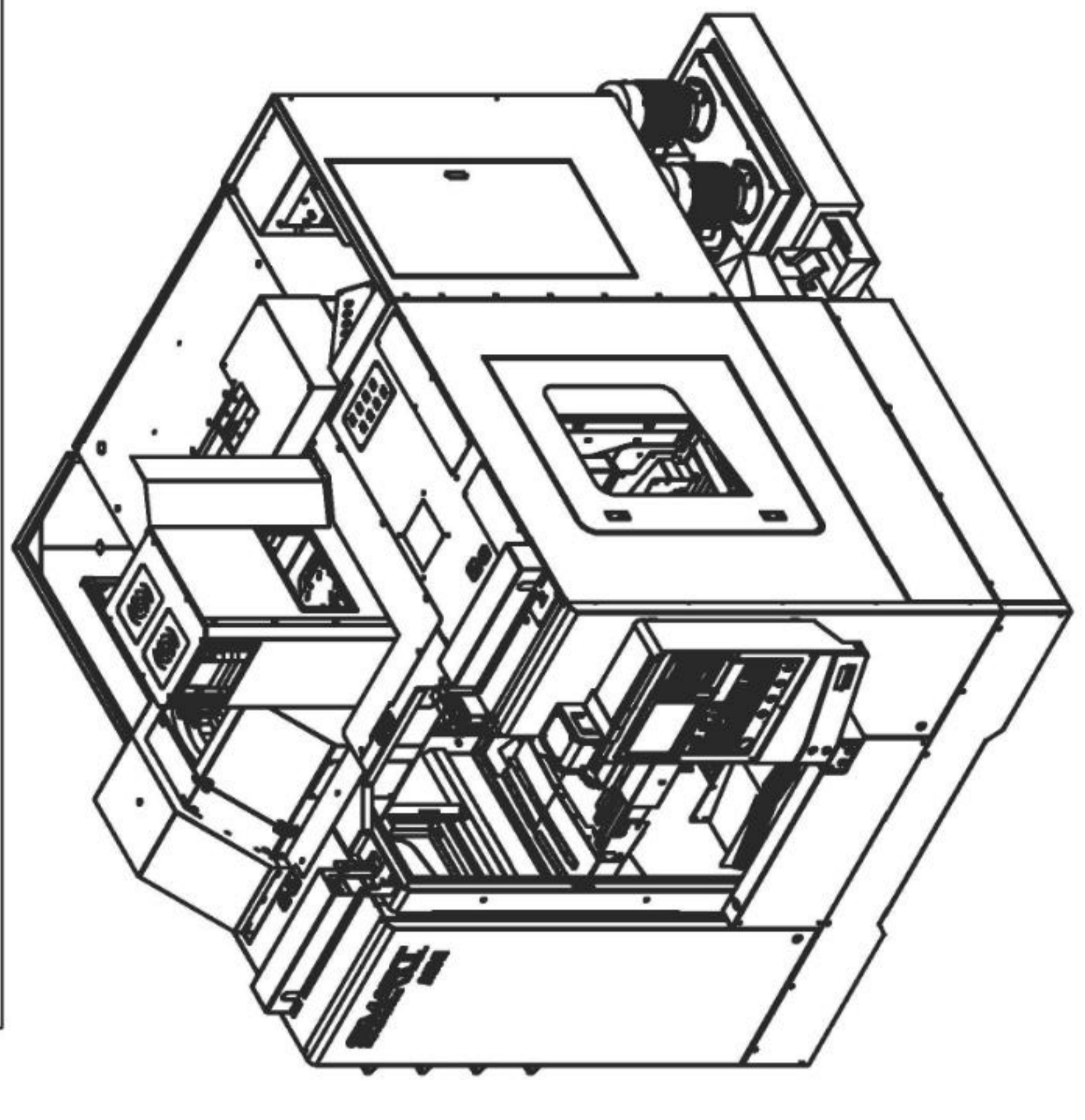
MINI

**Installation
Packet**

**MOVE IN HEIGHT
 ON SKID AS SHIPPED : 97"**
 -Cable track take loose : 94.5"
 -ATC motor removed: 91"
 -Removed from skid: 83.5"



LEVELLING PAD



Foundation Details

USE INDIAN STANDARD FOR MATERIAL
 NOTE:- (1) ALL RADIUS EQUAL TO THICKNESS UNLESS OTHERWISE SPECIFIED.
 (2) SHEETMETAL DIMENSION METHOD AS PER DIN ISO - 2768

TOLERANCE CLASS	PERMISSIBLE DEVIATION FOR LINEAR BASIC SIZE RANGE - VALUES IN MILLIMETER												
DESIGNATION	0.5	0.5	0.5	0.5	0.5	0.5	0.5	0.5	0.5	0.5	0.5	0.5	OVER
	UP TO	UP TO	UP TO	UP TO	UP TO	UP TO	UP TO	UP TO	UP TO	UP TO	UP TO	UP TO	UP TO
m	±0.1	±0.1	±0.2	±0.3	±0.5	±0.8	±1.2	±1.2	±1.2	±1.2	±1.2	±1.2	±2
DESIGN COPYRIGHT	THIS DOCUMENT IS CONFIDENTIAL AND MAY NOT BE MADE USE OF OR COMMUNICATED TO THIRD PARTIES WITHOUT OUR WRITTEN CONSENT.												
DO NOT SCALE	UNLESS OTHERWISE SPECIFIED DIMENSIONS ARE IN INCH												

Scale :	SB	Work Station :	Description :
1:50	HBS	Part Programming no. :	GENERAL ASSEMBLY
Projection :	HBS	Revised By :	Material :
⊕	HBS	Approved By :	Weight : 4683.441 Kg
	HBS	Date :	Thk. :
	HBS	Model : SV-1 MINI	Final Process :
	HBS	Inprocess Inspection Report :	RAL CODE :
	HBS	Detail of Holding Fixture :	Sheet Size : A3
	HBS		Drawing No. : V1P0B22021
	HBS		Sheet : 1 OF 1
	HBS		Rev. No. :

Installation, Operation & Maintenance Manual

Specifications	Unit	SV-MINI
Installation Data		
Net Weight (with ATC)	LBS	7500
Power Capacity (AMPS @ 220V)	kVA (A)	20 (52A)
Air Supply (Pressure Flow rate)	-	90 PSI 200LPM
Power Supply	-	220V, +/- 10% 3Phase

Shipping dimensions: 116" x 90" x 98" 8918 lbs

Note: Actual amp draw is dependent on actual measured voltage and machine usage. KVA is calculated with all motors at full amp draw.

Tool changer is mounted from the factory

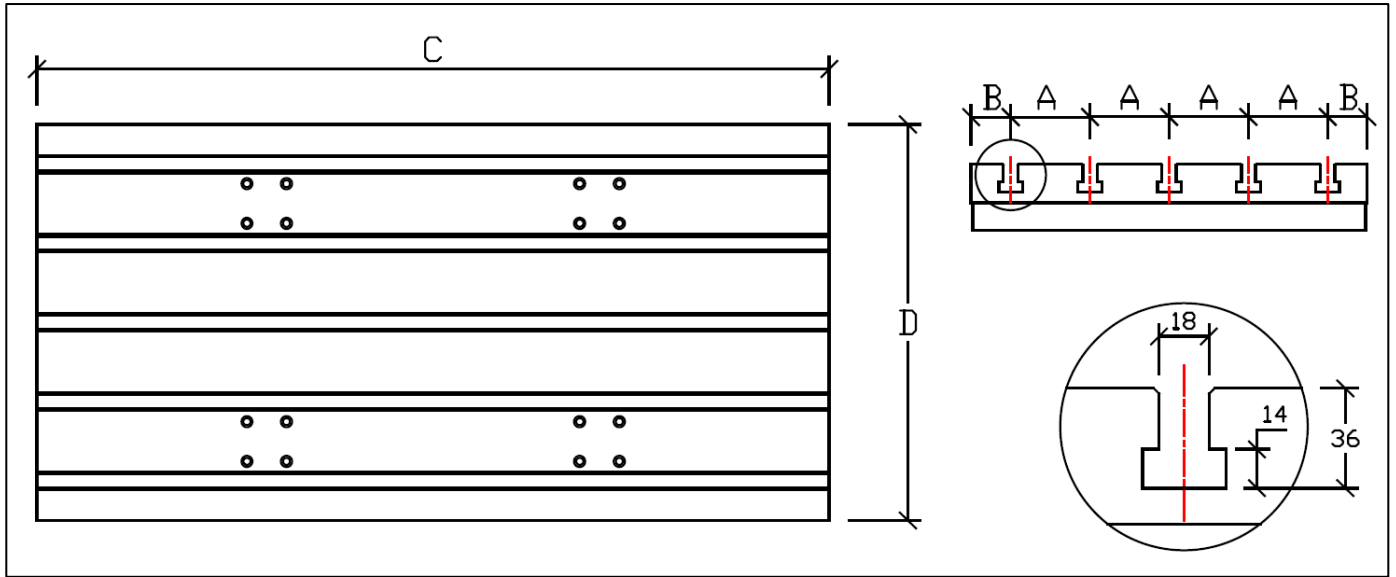
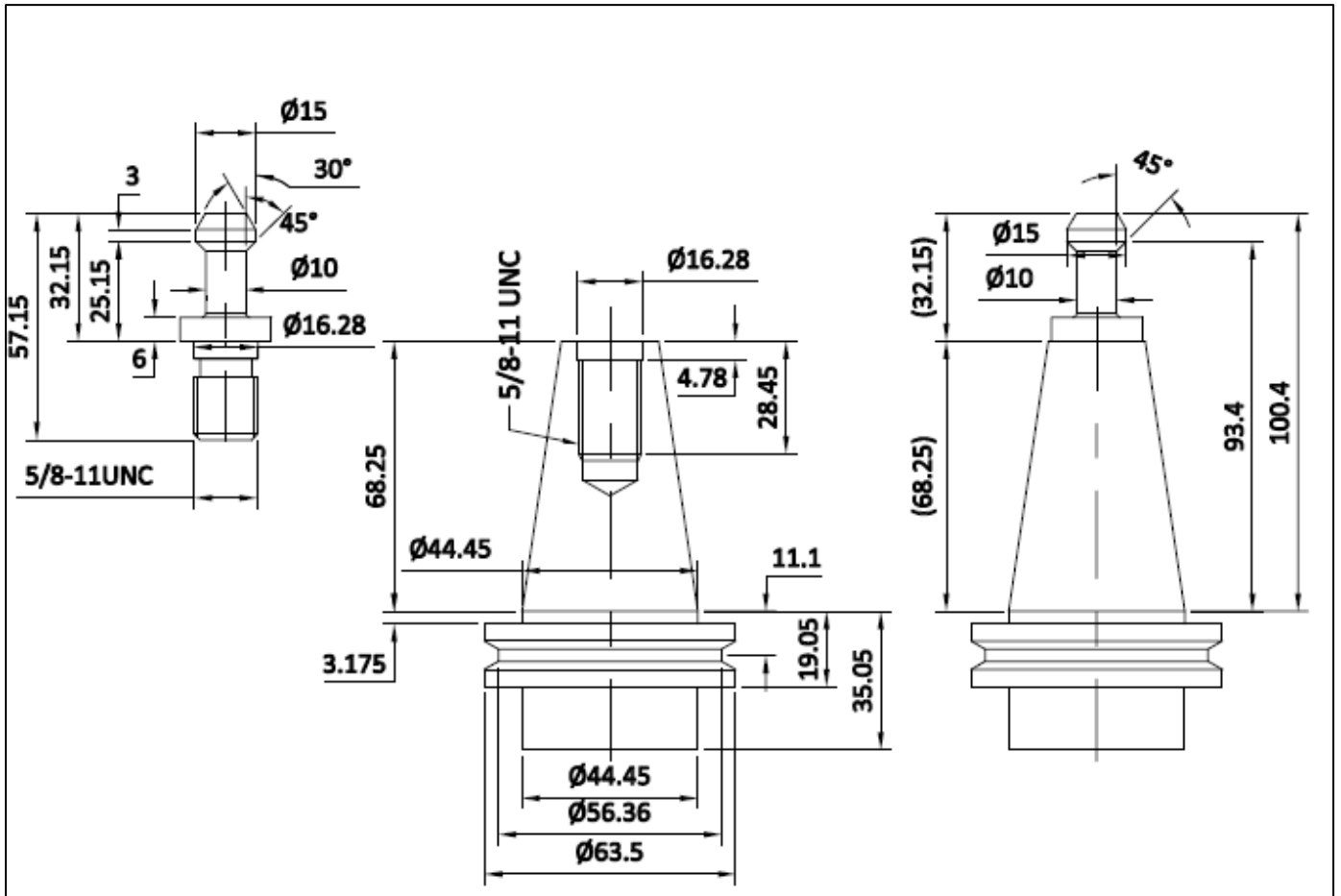


Table Dimension - SV Series

	SV-MINI
A	80
B	65
C	750
D	450

Pull Stud Information

CAT 40 Pull Stud and Tool holder



Points to be lubricated and brands of oil

Sl. No.	Parts to be lubricated	ISO Grade	IOC	HP	CASTROL	BPCL
01	X/Y/ Z - axis Guideways & Ball screws	VG68	SERVO WAY 68	WAY LUB 68	Meghna BD 68	Motomol 68
02	Spindle Oil chiller	VG32	SERVO SYSTEM 32 SER (Required at install if added on)	ENKLO 32	Hyspin AWS 32	Hydrol S 32
03	ATC gearbox	VG150	SERVO MESH SP150	Parthen EP 150	Alpha SP 150	Amocam oil 150
04	4th Axis	VG150	SERVO MESH SP150	Parthen EP 150	Alpha SP 150	Amocam oil 150
05	FRL	VG32	SERVO SYSTEM 32 SER	ENKLO 32	Hyspin AWS 32	Hydrol S 32

Lubrication System

- Centralized is used for lubrication on for LM guide and ball screw of all 3 axes.
- Interval for lubrication: Controlled by PLC (Settable by user).

