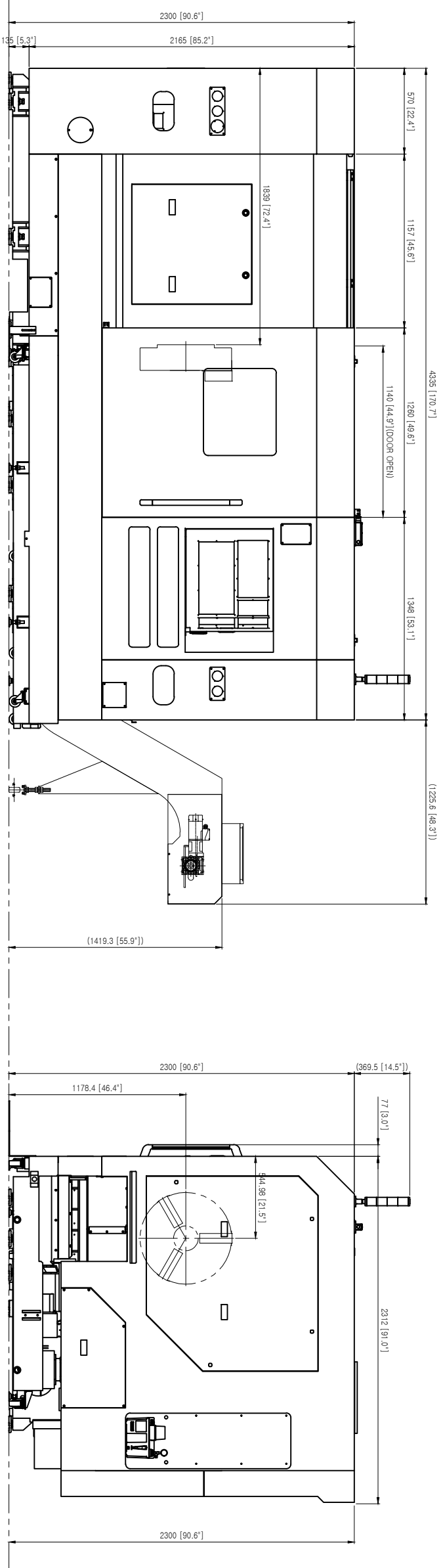
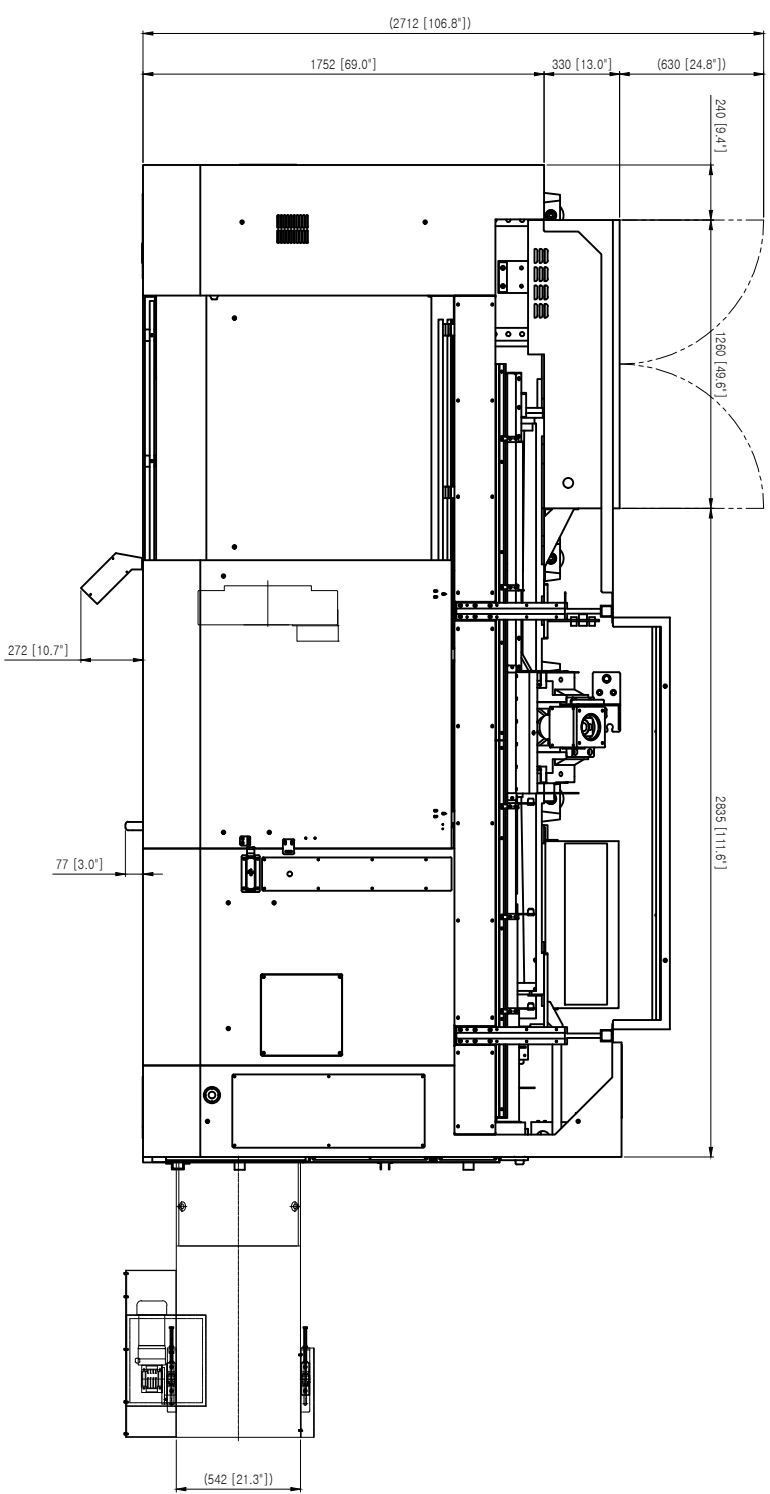




NL 6000S(M)

**Installation
Packet**



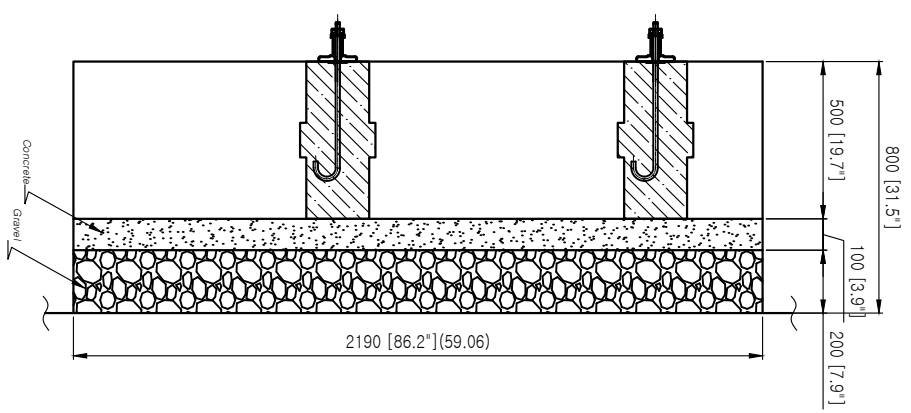
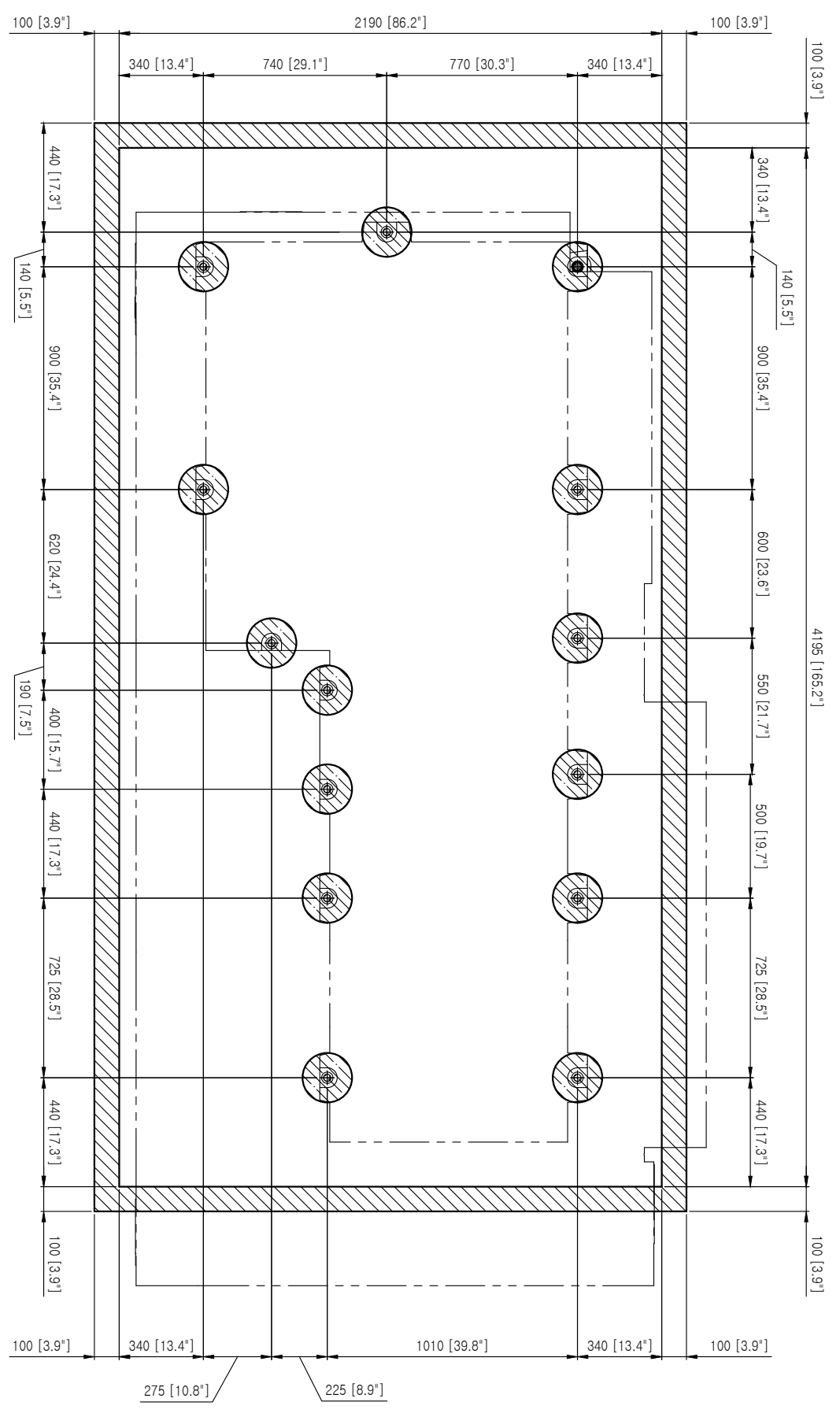
- 주)
 1. 단위 : mm[inch]
 2. 상기 사양은 품질 향상을 위하여 예고없이 변경 될 수 있음.

| MARK | REVISION | DATE | REV | CHK | DR | DATE | REV | CHK | DR |
|------|----------|------|-----|-----|----|------|-----|-----|----|
| | | | | | | | | | |
| | | | | | | | | | |
| | | | | | | | | | |
| | | | | | | | | | |

| APP'D | DES'D | DATE | REV | CHK | DR | DATE | REV | CHK | DR |
|------------|-----------|----------|-----|-----|----|----------|-----|-----|----|
| I. W. SHIN | M. S. KIM | 20.03.26 | | | | 20.03.26 | | | |

| GENERAL TOLERANCE | HEAT TREATMENT | WEIGHT (G) | UNIT ASS'Y |
|-------------------|----------------|------------|------------|
| 0.2- 0.5 ± 0.1 | | | SMTK |
| 6- 30 ± 0.2 | | | LAY-OUT |
| 30- 120 ± 0.3 | | | |
| 120- 315 ± 0.5 | | | |
| 315- 1000 ± 0.8 | | | |
| 1000- 2000 ± 1.2 | | | |

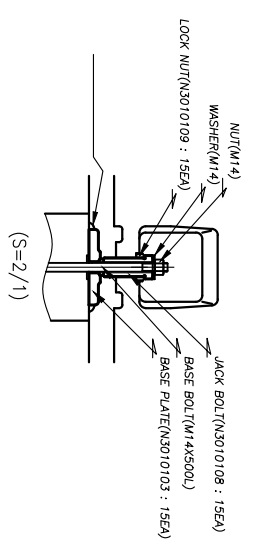
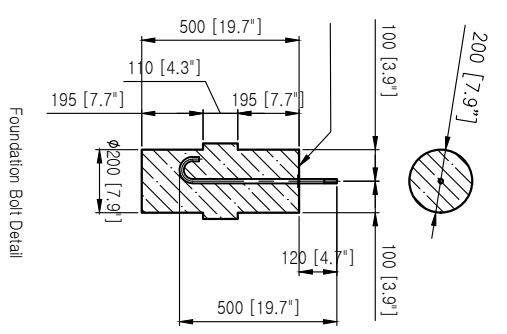
| DESIGN | MATERIAL | OR TY | NAME |
|----------------------|-----------------|-------|------------------|
| DESIGNER: I. W. SHIN | GENERAL LAY-OUT | 1/14 | GENERAL LAY-OUT |
| CHECKER: M. S. KIM | | SCALE | |
| DATE: 20.03.26 | | 1/12 | |
| | | | N 6000014A00 1/1 |



Note 1) This drawing shows the standard foundation. Modify the concrete thickness according ground condition.
 Before the first concrete is completely dry, chamfer the area facing the outside of the machine by approximately 100 mm.
 Concrete strength (28 days after placing concrete) should be 20.6 Mpa(2986.2 psi) or more.

Note 2) Because 100 mm(3.94 inch) of styrofoam must adhere to the inside surface of ditch, dig the foundation 100 mm(3.94 inch) outside of the outline of the foundation.

Note 3) Unit : mm(inch)



| MARK | REVISION | DATE | REV'D | CHE' D | DATE | REV'D | CHE' D |
|------|----------|------|-------|--------|------|-------|--------|
| | | | | | | | |
| | | | | | | | |
| | | | | | | | |
| | | | | | | | |

| APP'D | DES' D | DATE | REV'D | CHE' D | DATE | REV'D | CHE' D |
|------------|---------|----------|-------|--------|------|-------|--------|
| I. W. SHIN | S. PARR | 19.07.19 | | | | | |

| GENERAL TOLERANCE | HEAT TREATMENT | REWORK |
|-------------------|----------------|--------|
| 0.5- 6 0.1 | | |
| 6- 30 0.2 | | |
| 30- 120 0.3 | | |
| 120- 315 0.5 | | |
| 315- 1000 0.8 | | |
| 1000- 2000 1.2 | | |

| UNIT ASS'Y | SCALE | DATE | SCALE |
|------------|-------|----------|-------|
| NL 6000 | 1/10 | 19.07.19 | 1/10 |

| NAME | SCALE | DATE | SCALE |
|--------|-------|----------|-------|
| N 6000 | 1/10 | 19.07.19 | 1/10 |

Packing Information (Update date: 2024-02-23)

| NO. | Model | Model (Short) | Description | PART NAME | CBM | NET WEIGHT (KGS) | PACKIN G WEIGHT (KGS) | GROSS WEIGHT (KGS) |
|-----|---------------------------------|----------------------|----------------------------|--------------------------------|-------|------------------|-----------------------|--------------------|
| 1 | NL1500/2000/2000B (USA only) | NL1500/2000/2000B | Machine | 3,600(L) X 2,300(W) X 2,250(H) | 18.63 | 3,900 | 530 | 4,430 |
| 2 | NL1500M/2000M/2000BM (USA only) | NL1500M/2000M/2000BM | Machine | 6,000(L) X 2,300(W) X 2,250(H) | 18.63 | 4,200 | 530 | 4,730 |
| 3 | NL2000ASY | NL2000ASY | Machine + Chip conveyor | 5,300(L) X 2,300(W) X 2,475(H) | 30.17 | 5,700 | 700 | 6,400 |
| 4 | NL2000BSY | NL2000BSY | Machine + Chip conveyor | 5,300(L) X 2,300(W) X 2,475(H) | 30.17 | 5,800 | 700 | 6,500 |
| 5 | NL2500SY | NL2500SY | Machine + Chip conveyor | 5,300(L) X 2,300(W) X 2,475(H) | 30.17 | 6,100 | 700 | 6,800 |
| 6 | NL2500/750 | NL2500 | Machine + Chip conveyor | 5,100(L) X 2,300(W) X 2,250(H) | 26.39 | 5,700 | 660 | 6,360 |
| 7 | NL2500M/750 | NL2500M | Machine + Chip conveyor | 5,100(L) X 2,300(W) X 2,250(H) | 26.39 | 5,900 | 660 | 6,560 |
| 8 | NL2500/1100 | NL2500L | Machine + Chip conveyor | 5,550(L) X 2,300(W) X 2,250(H) | 28.72 | 6,900 | 720 | 7,620 |
| 9 | NL2500M/1100 | NL2500L M | Machine + Chip conveyor | 5,550(L) X 2,300(W) X 2,250(H) | 28.72 | 7,100 | 720 | 7,820 |
| 10 | NL3000B/750 | NL3000B | Machine + Chip conveyor | 5,100(L) X 2,300(W) X 2,250(H) | 26.39 | 5,700 | 660 | 6,360 |
| 11 | NL3000BM/750 | NL3000BM | Machine + Chip conveyor | 5,100(L) X 2,300(W) X 2,250(H) | 26.39 | 5,900 | 660 | 6,560 |
| 12 | NL3000B/1100 | NL3000BL | Machine + Chip conveyor | 5,550(L) X 2,300(W) X 2,250(H) | 28.72 | 6,900 | 720 | 7,620 |
| 13 | NL3000BM/1100 | NL3000BLM | Machine + Chip conveyor | 5,550(L) X 2,300(W) X 2,250(H) | 28.72 | 7,100 | 720 | 7,820 |
| 14 | NL4000M/1200 | NL4000M | Machine | 4,800(L) X 2,300(W) X 2,450(H) | 27.05 | 10,800 | 650 | 11,450 |
| 15 | NL4000/1200 C/C | NL4000 C/C | Chip conveyor | 4,250(L) X 950(W) X 1,500(H) | 6.06 | 800 | 70 | 870 |
| 16 | NL4000M/2200 | NL4000L M | Machine | 6,000(L) X 2,300(W) X 2,450(H) | 33.81 | 13,700 | 750 | 14,450 |
| 17 | NL4000M/2200 C/C | NL4000L M C/C | Chip conveyor | 5,450(L) X 950(W) X 1,600(H) | 8.21 | 1,000 | 100 | 1,100 |
| 18 | NL4000Y/2200 | NL4000L Y | Machine | 6,000(L) X 2,300(W) X 2,950(H) | 40.71 | 15,000 | 650 | 15,650 |
| 19 | NL4000Y/2200 C/C | NL4000L Y C/C | Chip conveyor | 5,450(L) X 950(W) X 1,800(H) | 9.73 | 1,000 | 100 | 1,100 |
| 20 | NL4000M/3200 | NL4000X/LX/LM | Machine | 7,000(L) X 2,300(W) X 2,550(H) | 41.06 | 16,800 | 1,500 | 18,300 |
| 21 | NL4000M/3200 C/C | NL4000X/LX/LM C/C | Chip conveyor | 6,450(L) X 1,150(W) X 1,600(H) | 11.87 | 1,200 | 100 | 1,300 |
| 22 | NL5000/1200 | NL5000 | Machine | 4,800(L) X 2,300(W) X 2,450(H) | 27.05 | 10,800 | 650 | 11,450 |
| 23 | NL5000M/1200 | NL5000M | Machine | 4,800(L) X 2,300(W) X 2,450(H) | 27.05 | 10,900 | 650 | 11,550 |
| 24 | NL5000M/1200 C/C | NL5000M C/C | Chip conveyor | 4,250(L) X 950(W) X 1,500(H) | 6.06 | 800 | 70 | 870 |
| 25 | NL5000/2200 | NL5000L | Machine | 6,000(L) X 2,300(W) X 2,450(H) | 33.81 | 13,700 | 750 | 14,450 |
| 26 | NL5000M/2200 | NL5000L M | Machine | 6,000(L) X 2,300(W) X 2,450(H) | 33.81 | 13,800 | 750 | 14,550 |
| 27 | NL5000M/2200 C/C | NL5000L M C/C | Chip conveyor | 5,450(L) X 950(W) X 1,600(H) | 8.21 | 1,000 | 100 | 1,100 |
| 28 | NL5000M/3200 | NL5000X/LX/LM | Machine | 7,000(L) X 2,300(W) X 2,550(H) | 41.06 | 16,900 | 1,500 | 18,400 |
| 29 | NL5000M/3200 C/C | NL5000X/LX/LM C/C | Chip conveyor | 6,450(L) X 1,150(W) X 1,600(H) | 11.87 | 1,200 | 100 | 1,300 |
| 30 | NL6000/750M | NL6000S/SM C/C | Chip conveyor + Rear cover | 3,950(L) X 2,300(W) X 1,750(H) | 15.90 | 1,800 | 130 | 1,930 |
| 31 | NL6000M/1500 C/C | NL6000M/1500 C/C | Chip conveyor + Rear cover | 4,850(L) X 2,300(W) X 1,600(H) | 17.85 | 2,150 | 150 | 2,300 |
| 32 | NL6000M/2200 C/C | NL6000L M C/C | Chip conveyor + Rear cover | 5,550(L) X 2,300(W) X 1,750(H) | 22.34 | 2,250 | 250 | 2,500 |
| 33 | NL6000M/3200 C/T | NL6000X/LX/LM C/T | Coolant tank + Rear cover | 5,600(L) X 2,300(W) X 950(H) | 12.24 | 2,650 | 350 | 3,000 |
| 34 | NV5500L C/C | NV5500L C/C | Chip conveyor | 4,880(L) X 1,150(W) X 750(H) | 4.21 | 900 | 100 | 1,000 |

| MACHINE MODEL | KVA | AMPS @ 220V | AMPS @480V | Coolant | Slideways | Hyd. Unit | Transmission | Chuck | Oil for Air | Chiller oil |
|---------------|-----|-------------|------------|---------|----------------|--------------|-----------------|--------------|-------------|-------------|
| NL150/200/250 | 31 | 82 | 37 | 48 | .79 gal | 5.3 gal | n/a | .2 oz daily | N/A | N/A |
| NL1500(M) | 31 | 82 | 37 | 48 | .79 gal | 5.3 gal | n/a | .2 oz daily | .6 oz | N/A |
| NL2000(M) | 31 | 82 | 37 | 48 | .79 gal | 5.3 gal | n/a | .2 oz daily | .6 oz | N/A |
| NL2000A/B/S/Y | 40 | 105 | 48 | 60 | .79 gal | 5.3 gal | n/a | .2 oz daily | .6 oz | 4 gal |
| NL2500SY | 50 | 131 | 60 | 60 | .79 gal | 5.3 gal | n/a | .2 oz daily | .6 oz | 4 gal |
| NL2500S | 40 | 105 | 48 | 48 | .79 gal | 5.3 gal | 0.75 | .2 oz daily | .6 oz | N/A |
| NL2500(M) | 40 | 105 | 48 | 53 | .79 gal | 5.3 gal | 0.75 | .2 oz daily | .6 oz | N/A |
| NL2500/1100 | 40 | 105 | 48 | 63 | .79 gal | 5.3 gal | 0.75 | .2 oz daily | N/A | N/A |
| NL3000(M) | 40 | 105 | 48 | 63 | .79 gal | 5.3 gal | 0.75 | .2 oz daily | N/A | N/A |
| NL3500BY | 55 | 144 | 66 | 101 | .79 gal | 6.6 | n/a | .2 oz daily | N/A | N/A |
| NL4000(M) | 55 | 144 | 66 | 63 | .79 gal | 6.4 gal | 0.75 | .2 oz daily | N/A | N/A |
| NL5000(M) | 55 | 144 | 66 | 63 | .79 gal | 6.4 gal | 0.75 | .2 oz daily | N/A | N/A |
| NL5000L(M) | 65 | 170 | 78 | 130 | .79 gal | 6.4 gal | 0.75 | .2 oz daily | N/A | N/A |
| NL6000S(M) | 65 | 170 | 78 | 105 | .79 gal | 15 gal | 0.75 | .2 oz daily | N/A | N/A |
| NL6000L(M) | 65 | 170 | 78 | 150 | .79 gal | 15 gal | 0.75 | .2 oz daily | N/A | N/A |
| NL6000XL(M) | 65 | 170 | 78 | 180 | .79 gal | 15 gal | 0.75 | .2 oz daily | N/A | N/A |
| NL7000L(M) | 65 | 170 | 78 | 150 | .79 gal | 15 gal | 2 gal | .2 oz daily | N/A | N/A |
| NL7000XL(M) | 65 | 170 | 78 | 180 | .79 gal | 15 gal | 2 gal | .2 oz daily | N/A | N/A |
| | | | | | | | | | | |
| | | | | | Shell Oil T68 | | Mobil Oil Light | | | |
| | | | | | Mobil Vactra#2 | Mobil DTE 24 | ISO VG 32 | SW10 | DTE Ligh | Velocity 6 |
| | | | | | check daily | check daily | check daily | grease daily | check daily | Check Daily |

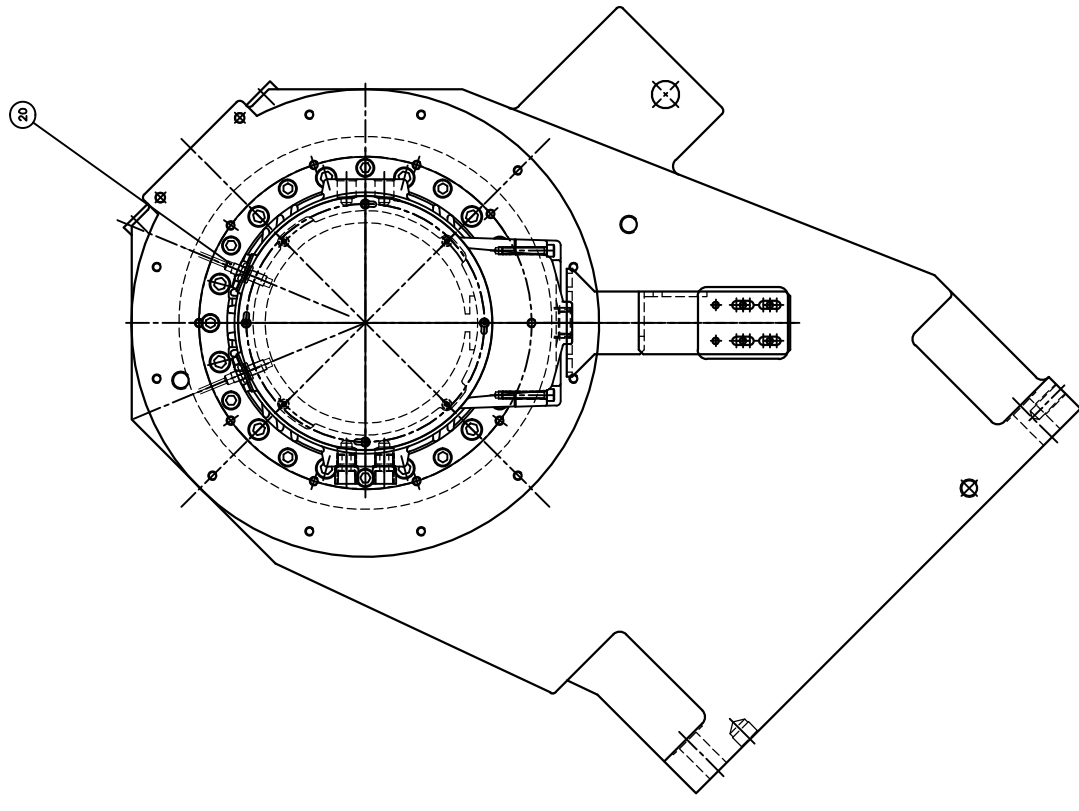
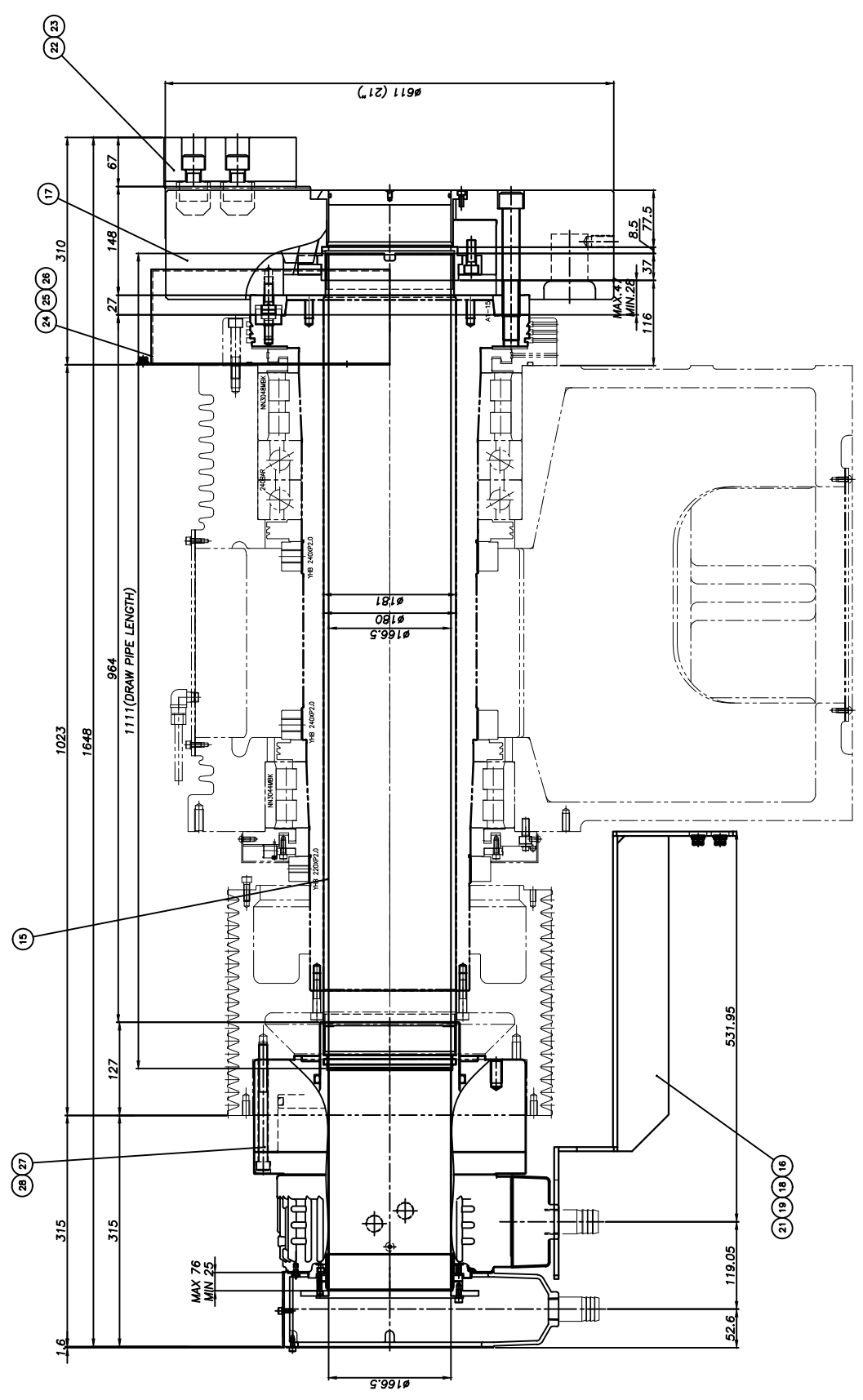
Air requirements: 80-100 psi, 5-10 CFM

Coolant only fluid required at install

Voltage : 220V +/- 10% (480V requires transformer)

00V10009001A00

| NO. | DWG NO. | NAME | MAT'L | Q'TY | REMARK |
|-----|-------------|--------------------|---------|------|----------------------------|
| 15 | N6090103A00 | DRAW TUBE | STKM13C | 1 | |
| 16 | N6090102A00 | CYLINDER BRACKET | SS400 | 1 | |
| 17 | N6090801A00 | HYD CHUCK | | 1 | HCH-24A15(27T, M175x 3.0P) |
| 18 | S0210825 | SOCKET HEAD BOLT | | 4 | M8x25L |
| 19 | S2550800 | SPRING WASHER | | 4 | M8 |
| 20 | N2590805A00 | PROXIMITY SWITCH | | 2 | FL7M-3J6HD-C(YAMATAKE) |
| 21 | S2530800 | WASHER | | 4 | M8 |
| 22 | N5090804A00 | SOFT JAW | | 2 | SB18A2(SAMCHULLY) |
| 23 | N5090805A00 | HARD JAW | | 1 | HB18B2(SAMCHULLY) |
| 24 | N6090101A00 | CHUCK SAFETY COVER | SPCC | 1 | |
| 25 | S0210612 | SOCKET HEAD BOLT | | 3 | M6x12L |
| 26 | S2550600 | SPRING WASHER | | 3 | M6 |
| 27 | N5090803A00 | ROTARY CYLINDER | | 1 | SDL-30516(SAMCHULLY) |
| 28 | S0221216 | SOCKET HEAD BOLT | | 12 | M12x160L |



| APP'D | JWSH/M | GENERAL TOLERANCE | HEAT TREATMENT |
|----------|----------|----------------------------|----------------|
| 19/04/11 | | (MACHINING) | |
| REV'D | | 0.5 - 6.0t | |
| CHE'D | | 6 - 30.0t | |
| DES'D | | 30 - 125.0t | |
| DATE | 19/04/11 | 120 - 315.0t | |
| | | 315 - 1000.0t | |
| | | 1000 - 2000.0t | |
| | | UNLESS OTHERWISE SPECIFIED | |
| | | CHUCK ASSY | |
| | | SCALE | 1/3.5 |
| | | PLATING | |
| | | COL. 3, COL. 8 | |
| | | UNIT ASSY | SMTK |
| | | NAME | CHUCK ASSY |
| | | Q'TY | 1/CH |
| | | MATERIAL | |
| | | SCALE | 1/3.5 |
| | | PLATING | |
| | | NAME | CHUCK ASSY |
| | | UNIT ASSY | CHUCK ASSY |
| | | Q'TY | 1/CH |
| | | MATERIAL | |
| | | SCALE | 1/3.5 |
| | | PLATING | |
| | | NAME | CHUCK ASSY |
| | | UNIT ASSY | CHUCK ASSY |
| | | Q'TY | 1/CH |
| | | MATERIAL | |
| | | SCALE | 1/3.5 |
| | | PLATING | |
| | | NAME | CHUCK ASSY |
| | | UNIT ASSY | CHUCK ASSY |
| | | Q'TY | 1/CH |
| | | MATERIAL | |
| | | SCALE | 1/3.5 |
| | | PLATING | |
| | | NAME | CHUCK ASSY |
| | | UNIT ASSY | CHUCK ASSY |
| | | Q'TY | 1/CH |
| | | MATERIAL | |
| | | SCALE | 1/3.5 |
| | | PLATING | |
| | | NAME | CHUCK ASSY |
| | | UNIT ASSY | CHUCK ASSY |
| | | Q'TY | 1/CH |
| | | MATERIAL | |
| | | SCALE | 1/3.5 |
| | | PLATING | |
| | | NAME | CHUCK ASSY |
| | | UNIT ASSY | CHUCK ASSY |
| | | Q'TY | 1/CH |
| | | MATERIAL | |
| | | SCALE | 1/3.5 |
| | | PLATING | |
| | | NAME | CHUCK ASSY |
| | | UNIT ASSY | CHUCK ASSY |
| | | Q'TY | 1/CH |
| | | MATERIAL | |
| | | SCALE | 1/3.5 |
| | | PLATING | |
| | | NAME | CHUCK ASSY |
| | | UNIT ASSY | CHUCK ASSY |
| | | Q'TY | 1/CH |
| | | MATERIAL | |
| | | SCALE | 1/3.5 |
| | | PLATING | |
| | | NAME | CHUCK ASSY |
| | | UNIT ASSY | CHUCK ASSY |
| | | Q'TY | 1/CH |
| | | MATERIAL | |
| | | SCALE | 1/3.5 |
| | | PLATING | |
| | | NAME | CHUCK ASSY |
| | | UNIT ASSY | CHUCK ASSY |
| | | Q'TY | 1/CH |
| | | MATERIAL | |
| | | SCALE | 1/3.5 |
| | | PLATING | |
| | | NAME | CHUCK ASSY |
| | | UNIT ASSY | CHUCK ASSY |
| | | Q'TY | 1/CH |
| | | MATERIAL | |
| | | SCALE | 1/3.5 |
| | | PLATING | |
| | | NAME | CHUCK ASSY |
| | | UNIT ASSY | CHUCK ASSY |
| | | Q'TY | 1/CH |
| | | MATERIAL | |
| | | SCALE | 1/3.5 |
| | | PLATING | |
| | | NAME | CHUCK ASSY |
| | | UNIT ASSY | CHUCK ASSY |
| | | Q'TY | 1/CH |
| | | MATERIAL | |
| | | SCALE | 1/3.5 |
| | | PLATING | |
| | | NAME | CHUCK ASSY |
| | | UNIT ASSY | CHUCK ASSY |
| | | Q'TY | 1/CH |
| | | MATERIAL | |
| | | SCALE | 1/3.5 |
| | | PLATING | |
| | | NAME | CHUCK ASSY |
| | | UNIT ASSY | CHUCK ASSY |
| | | Q'TY | 1/CH |
| | | MATERIAL | |
| | | SCALE | 1/3.5 |
| | | PLATING | |
| | | NAME | CHUCK ASSY |
| | | UNIT ASSY | CHUCK ASSY |
| | | Q'TY | 1/CH |
| | | MATERIAL | |
| | | SCALE | 1/3.5 |
| | | PLATING | |
| | | NAME | CHUCK ASSY |
| | | UNIT ASSY | CHUCK ASSY |
| | | Q'TY | 1/CH |
| | | MATERIAL | |
| | | SCALE | 1/3.5 |
| | | PLATING | |
| | | NAME | CHUCK ASSY |
| | | UNIT ASSY | CHUCK ASSY |
| | | Q'TY | 1/CH |
| | | MATERIAL | |
| | | SCALE | 1/3.5 |
| | | PLATING | |
| | | NAME | CHUCK ASSY |
| | | UNIT ASSY | CHUCK ASSY |
| | | Q'TY | 1/CH |
| | | MATERIAL | |
| | | SCALE | 1/3.5 |
| | | PLATING | |
| | | NAME | CHUCK ASSY |
| | | UNIT ASSY | CHUCK ASSY |
| | | Q'TY | 1/CH |
| | | MATERIAL | |
| | | SCALE | 1/3.5 |
| | | PLATING | |
| | | NAME | CHUCK ASSY |
| | | UNIT ASSY | CHUCK ASSY |
| | | Q'TY | 1/CH |
| | | MATERIAL | |
| | | SCALE | 1/3.5 |
| | | PLATING | |
| | | NAME | CHUCK ASSY |
| | | UNIT ASSY | CHUCK ASSY |
| | | Q'TY | 1/CH |
| | | MATERIAL | |
| | | SCALE | 1/3.5 |
| | | PLATING | |
| | | NAME | CHUCK ASSY |
| | | UNIT ASSY | CHUCK ASSY |
| | | Q'TY | 1/CH |
| | | MATERIAL | |
| | | SCALE | 1/3.5 |
| | | PLATING | |
| | | NAME | CHUCK ASSY |
| | | UNIT ASSY | CHUCK ASSY |
| | | Q'TY | 1/CH |
| | | MATERIAL | |
| | | SCALE | 1/3.5 |
| | | PLATING | |
| | | NAME | CHUCK ASSY |
| | | UNIT ASSY | CHUCK ASSY |
| | | Q'TY | 1/CH |
| | | MATERIAL | |
| | | SCALE | 1/3.5 |
| | | PLATING | |
| | | NAME | CHUCK ASSY |
| | | UNIT ASSY | CHUCK ASSY |
| | | Q'TY | 1/CH |
| | | MATERIAL | |
| | | SCALE | 1/3.5 |
| | | PLATING | |
| | | NAME | CHUCK ASSY |
| | | UNIT ASSY | CHUCK ASSY |
| | | Q'TY | 1/CH |
| | | MATERIAL | |
| | | SCALE | 1/3.5 |
| | | PLATING | |
| | | NAME | CHUCK ASSY |
| | | UNIT ASSY | CHUCK ASSY |
| | | Q'TY | 1/CH |
| | | MATERIAL | |
| | | SCALE | 1/3.5 |
| | | PLATING | |
| | | NAME | CHUCK ASSY |
| | | UNIT ASSY | CHUCK ASSY |
| | | Q'TY | 1/CH |
| | | MATERIAL | |
| | | SCALE | 1/3.5 |
| | | PLATING | |
| | | NAME | CHUCK ASSY |
| | | UNIT ASSY | CHUCK ASSY |
| | | Q'TY | 1/CH |
| | | MATERIAL | |
| | | SCALE | 1/3.5 |
| | | PLATING | |
| | | NAME | CHUCK ASSY |
| | | UNIT ASSY | CHUCK ASSY |
| | | Q'TY | 1/CH |
| | | MATERIAL | |
| | | SCALE | 1/3.5 |
| | | PLATING | |
| | | NAME | CHUCK ASSY |
| | | UNIT ASSY | CHUCK ASSY |
| | | Q'TY | 1/CH |
| | | MATERIAL | |
| | | SCALE | 1/3.5 |
| | | PLATING | |
| | | NAME | CHUCK ASSY |
| | | UNIT ASSY | CHUCK ASSY |
| | | Q'TY | 1/CH |
| | | MATERIAL | |
| | | SCALE | 1/3.5 |
| | | PLATING | |
| | | NAME | CHUCK ASSY |
| | | UNIT ASSY | CHUCK ASSY |
| | | Q'TY | 1/CH |
| | | MATERIAL | |
| | | SCALE | 1/3.5 |
| | | PLATING | |
| | | NAME | CHUCK ASSY |
| | | UNIT ASSY | CHUCK ASSY |
| | | Q'TY | 1/CH |
| | | MATERIAL | |
| | | SCALE | 1/3.5 |
| | | PLATING | |
| | | NAME | CHUCK ASSY |
| | | UNIT ASSY | CHUCK ASSY |
| | | Q'TY | 1/CH |
| | | MATERIAL | |
| | | SCALE | 1/3.5 |
| | | PLATING | |
| | | NAME | CHUCK ASSY |
| | | UNIT ASSY | CHUCK ASSY |
| | | Q'TY | 1/CH |
| | | MATERIAL | |
| | | SCALE | 1/3.5 |
| | | PLATING | |
| | | NAME | CHUCK ASSY |
| | | UNIT ASSY | CHUCK ASSY |
| | | Q'TY | 1/CH |
| | | MATERIAL | |
| | | SCALE | 1/3.5 |
| | | PLATING | |
| | | NAME | CHUCK ASSY |
| | | UNIT ASSY | CHUCK ASSY |
| | | Q'TY | 1/CH |
| | | MATERIAL | |
| | | SCALE | 1/3.5 |
| | | PLATING | |
| | | NAME | CHUCK ASSY |
| | | UNIT ASSY | CHUCK ASSY |
| | | Q'TY | 1/CH |
| | | MATERIAL | |
| | | SCALE | 1/3.5 |
| | | PLATING | |
| | | NAME | CHUCK ASSY |
| | | UNIT ASSY | CHUCK ASSY |
| | | Q'TY | 1/CH |
| | | MATERIAL | |
| | | SCALE | 1/3.5 |
| | | PLATING | |
| | | NAME | CHUCK ASSY |
| | | UNIT ASSY | CHUCK ASSY |
| | | Q'TY | 1/CH |
| | | MATERIAL | |
| | | SCALE | 1/3.5 |
| | | PLATING | |
| | | NAME | CHUCK ASSY |
| | | UNIT ASSY | CHUCK ASSY |
| | | Q'TY | 1/CH |
| | | MATERIAL | |
| | | SCALE | 1/3.5 |
| | | PLATING | |
| | | NAME | CHUCK ASSY |
| | | UNIT ASSY | CHUCK ASSY |
| | | Q'TY | 1/CH |
| | | MATERIAL | |
| | | SCALE | 1/3.5 |
| | | PLATING | |
| | | NAME | CHUCK ASSY |
| | | UNIT ASSY | CHUCK ASSY |
| | | Q'TY | 1/CH |
| | | MATERIAL | |
| | | SCALE | 1/3.5 |
| | | PLATING | |
| | | NAME | CHUCK ASSY |
| | | UNIT ASSY | CHUCK ASSY |
| | | Q'TY | 1/CH |
| | | MATERIAL | |
| | | SCALE | 1/3.5 |
| | | PLATING | |
| | | NAME | CHUCK ASSY |
| | | UNIT ASSY | CHUCK ASSY |
| | | Q'TY | 1/CH |
| | | MATERIAL | |
| | | SCALE | 1/3.5 |
| | | PLATING | |
| | | NAME | CHUCK ASSY |
| | | UNIT ASSY | CHUCK ASSY |
| | | Q'TY | 1/CH |
| | | MATERIAL | |
| | | SCALE | 1/3.5 |
| | | PLATING | |
| | | NAME | CHUCK ASSY |
| | | UNIT ASSY | CHUCK ASSY |
| | | Q'TY | 1/CH |
| | | MATERIAL | |
| | | SCALE | 1/3.5 |
| | | PLATING | |
| | | NAME | CHUCK ASSY |
| | | UNIT ASSY | CHUCK ASSY |
| | | Q'TY | 1/CH |
| | | MATERIAL | |
| | | SCALE | 1/3.5 |
| | | PLATING | |
| | | NAME | CHUCK ASSY |
| | | UNIT ASSY | CHUCK ASSY |
| | | Q'TY | 1/CH |
| | | MATERIAL | |
| | | SCALE | 1/3.5 |
| | | PLATING | |
| | | NAME | CHUCK ASSY |
| | | UNIT ASSY | CHUCK ASSY |