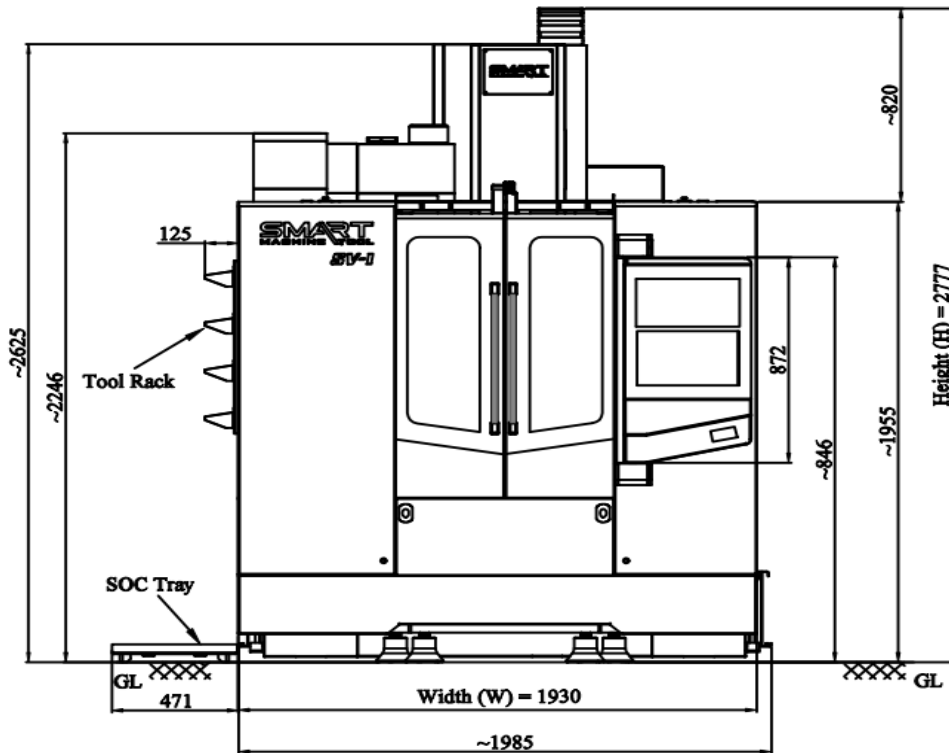
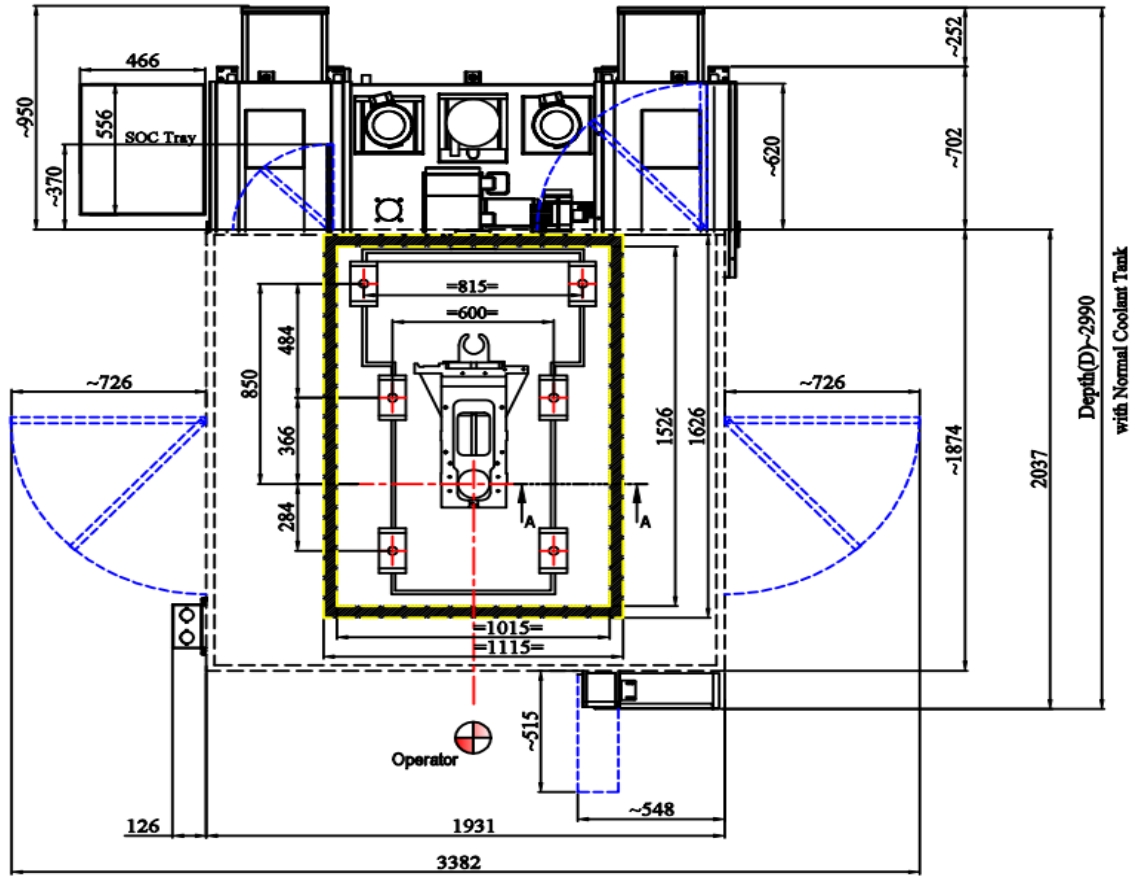


SMART
MACHINE TOOL

MINI

**Installation
Packet**

SV-1 Floor Space Diagram With Normal Coolant Tank



Installation, Operation & Maintenance Manual

Specifications	Unit	SV-MINI	SV-2	SV-3	SV-5
Installation Data					
Net Weight (with ATC)	Kg	3400	4800	6100	8500
Power Capacity (Fanuc)	kVA	20	40	40	40
Air Supply (Pressure Flow rate)	-	6 Bar 200LPM	6 Bar 200LPM	6 Bar 200LPM	6 Bar 200LPM
Power Supply	-	220V, +/- 10% 3Phase	220V, +/- 10% 3Phase	220V, +/- 10% 3Phase	220V, +/- 10% 3Phase

Note: Actual amp draw is dependent on actual measured voltage and machine usage. KVA is calculated with all motors at full amp draw.

Tool changer is mounted from the factory

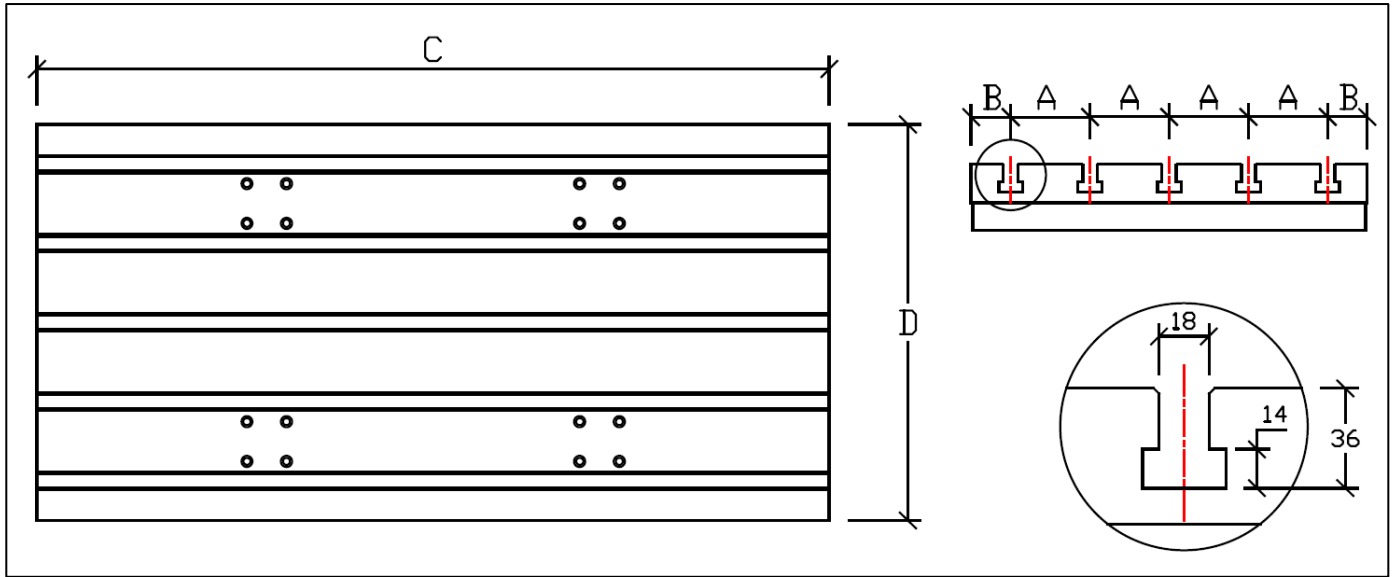
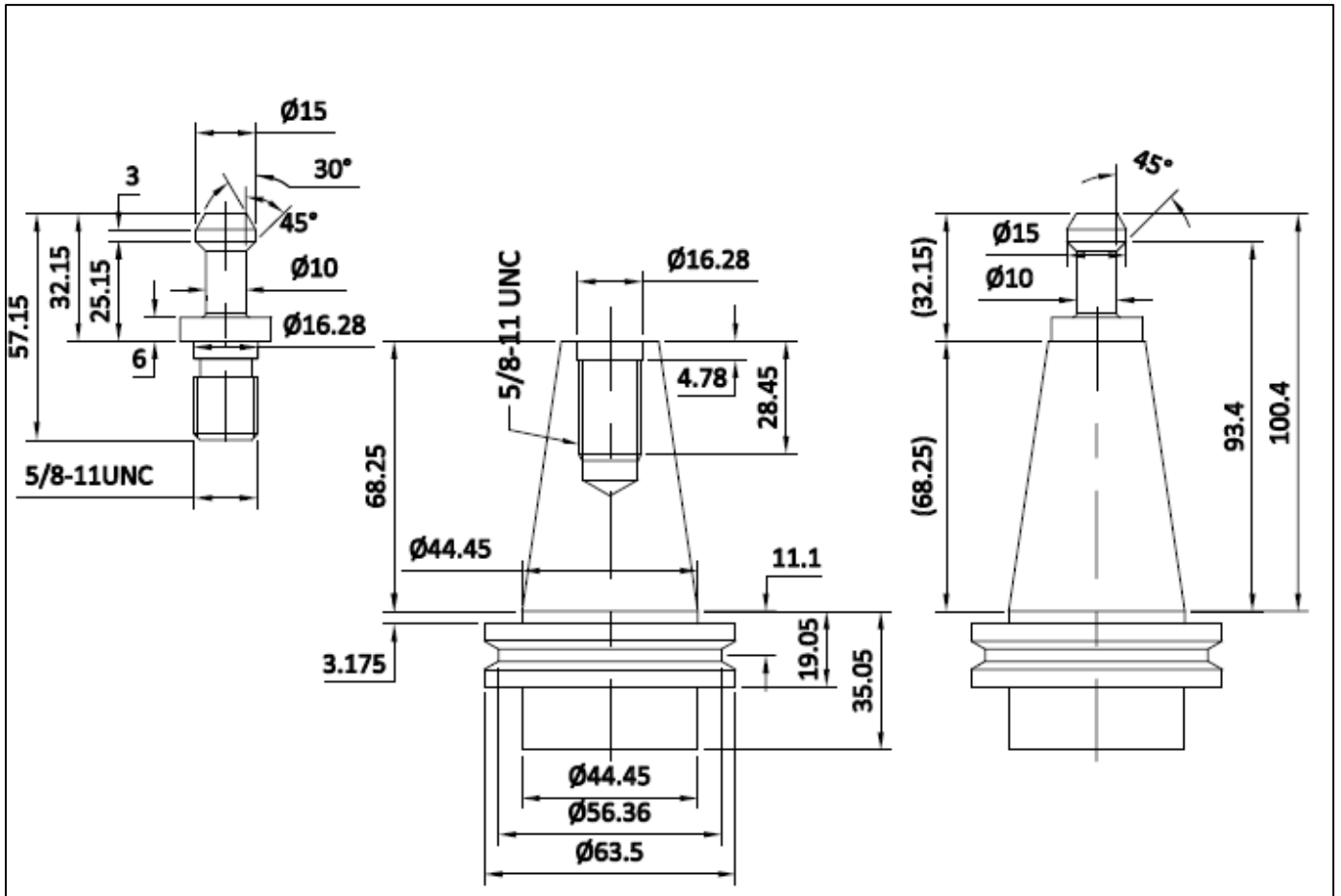


Table Dimension - SV Series

	SV-MINI	SV-2	SV-3	SV-4	SV-5
A	80	100	100	125	125
B	65	50	50	50	75
C	750	1000	1150	1450	1450
D	450	500	500	600	650

Pull Stud Information

CAT 40 Pull Stud and Tool holder



Points to be lubricated and brands of oil

Sl. No.	Parts to be lubricated	ISO Grade	IOC	HP	CASTROL	BPCL
01	X/Y/ Z - axis Guideways & Ball screws	VG68	SERVO WAY 68	WAY LUB 68	Meghna BD 68	Motomol 68
02	Spindle Oil chiller	VG32	SERVO SYSTEM 32 SER (Required at install if added on)	ENKLO 32	Hyspin AWS 32	Hydrol S 32
03	ATC gearbox	VG150	SERVO MESH SP150	Parthen EP 150	Alpha SP 150	Amocam oil 150
04	4th Axis	VG150	SERVO MESH SP150	Parthen EP 150	Alpha SP 150	Amocam oil 150
05	FRL	VG32	SERVO SYSTEM 32 SER	ENKLO 32	Hyspin AWS 32	Hydrol S 32

Lubrication System

- Centralized is used for lubrication on for LM guide and ball screw of all 3 axes.
- Interval for lubrication: Controlled by PLC (Settable by user).

