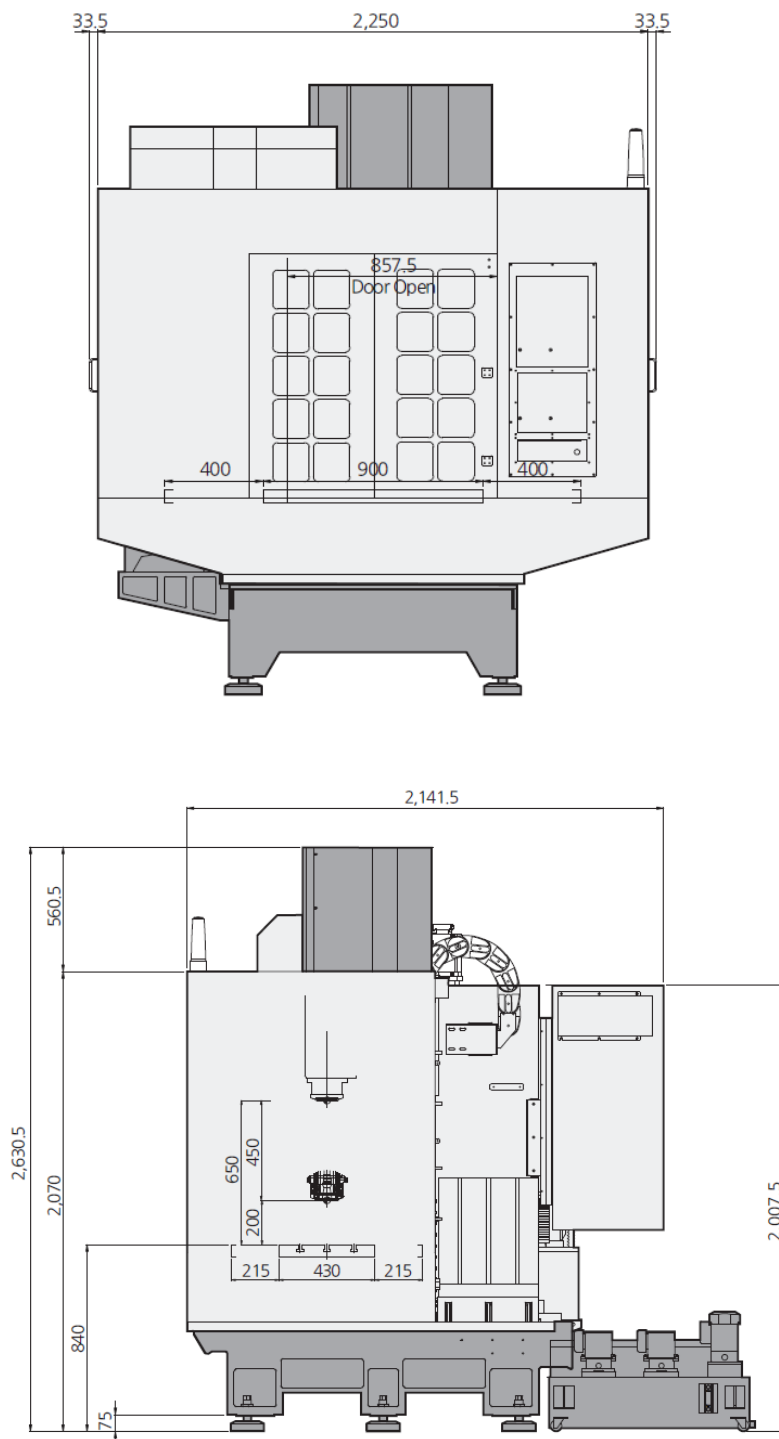




KT360D

**Installation
Packet**

□ Machine Size



Floor space (W x L)	2,250 x 2,700 (mm)
Height	2,630 mm
Weight	4,000 kg

SMART KM 430

Prices and specifications are subject to change without notice.
Pictures and graphics are representative and may not be from the actual machine.

1. Machine foundation / Features

□ Table

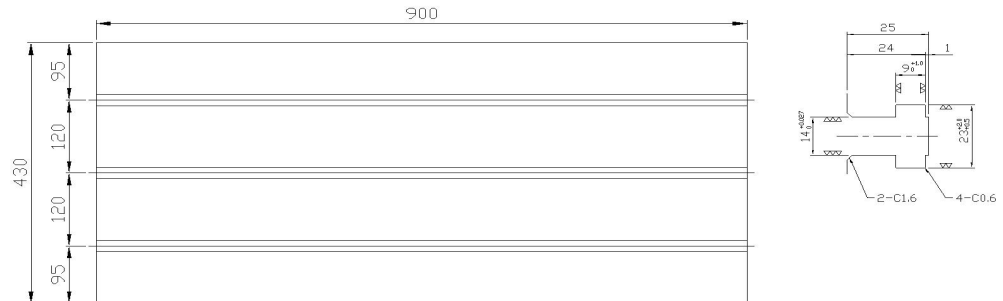
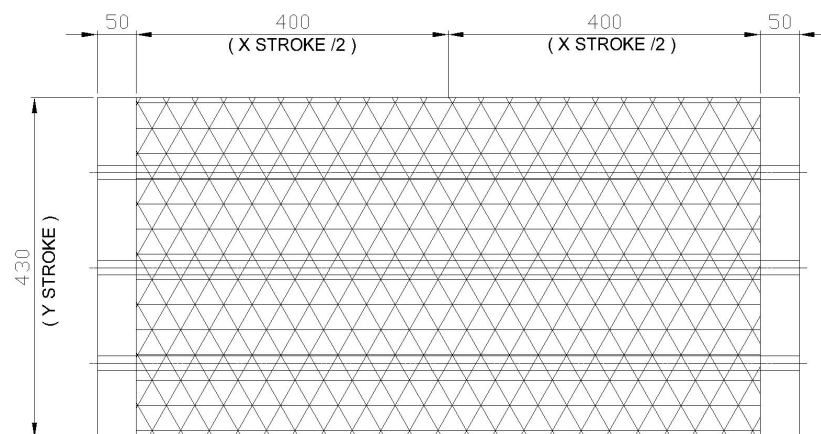


Table Size (L x W)		900 x 430 mm
Max. loading capacity (Uniform load)		350 kg
T-slot	Dimension	23 H8
	Number	3 EA

□ Work area



Working area	X axis	800 mm
	Y axis	430 mm

SMART KM 430

Prices and specifications are subject to change without notice.
Pictures and graphics are representative and may not be from the actual machine.

KT360 Specs

SHIPPING DIMENSIONS

194x47x100 @ 12,125
130x90x93 @
2866

AIR Requirements

Pressure: 75-100 PSI
Consumption: 5-10 SCFM

Power Requirements

Voltage: 3 phase 220V +/- 10%
KVA:40
Amps @ 220V : 105

Fluid Requirements

Coolant: 98 gallons *
Type: Customer preference
Hydraulic: 10 gallons *
Type: DTE 24 (or equivalent)
Chiller: 6 Gallons *
Type: Velocite #6 (or equivalent)
Lube: 2 liters
Type: T68 way lube (or equivalent)
* : Required at
install

Pull stud

